



***CREATING VALUE IN A
WORLD RENOWNED
GOLD MINING CAMP***

TSX.V: RDS

**GOLD RUNS
IN OUR
VEINS**



Cautionary Statement



CAUTIONARY STATEMENT REGARDING FORWARD-LOOKING INFORMATION

Except for historical information certain statements included in this presentation are forward-looking statements within the meaning of Canadian securities laws. Such statements may include words such as “Anticipates”, “schedule”, “projects”, “plans”, “targets”, “programs”, “continues”, “estimates”, “could”, “should”, “would” or “will”. Forward-looking statements made in this presentation involve significant risks and uncertainties. These risks and uncertainties include the inherent risks involved in the exploration and development of mineral properties. the uncertainties involved in interpreting drilling results and other geological data. fluctuating metal prices. the possibility of project cost overruns or unanticipated costs and expenses. uncertainties relating to the availability and costs of financing needed in the future. and other factors. The Corporation disclaims any intention or obligation to update forward-looking statements if circumstances or management’s estimates or opinions should change. The reader is cautioned not to place undue reliance on forward-looking statements.

All references to currency made in this presentation are in Canadian dollars unless otherwise stated.

Catherine Jalbert, P.Geo., acts as a Qualified Person as defined in National Instrument 43-101 and has reviewed and approved the technical information in this presentation.

THE O'BRIEN PROJECT

100% OWNED

EXPERIENCED
TEAM WITH
+13%
OWNERSHIP

LOCATED IN A WORLD RENOWNED
MINING CAMP AND A TOP TIER
MINING JURISDICTION

INDICATED
RESOURCE
INCREASED BY
95%
IN Q1 2018

HIGH UPSIDE
POTENTIAL

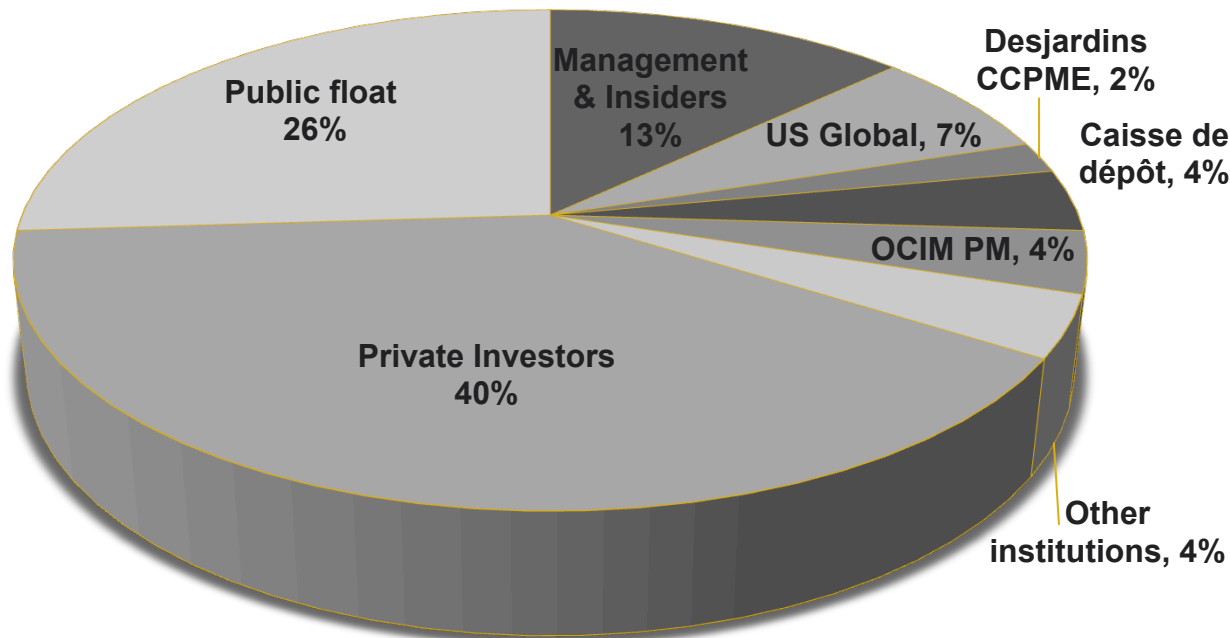
+40,000 M DRILLED
BELOW \$ 100 / M IN
THE LAST 2 YEARS

- ✓ **Resource estimate update**
 - ✓ 95% Increase in Indicated resources
 - ✓ Strong upside in vertical extension and along strike

- ✓ **Assays from Re-Log program**
 - ✓ Near-surface enrichment vector newly defined
 - ✓ Key for exploration at depth

- ✓ **3D Geological model defined exploration upside**
 - ✓ 11,000 m infill drill program (underway)
 - + 12,000 m exploration program
 - Exploration at depth
 - O'Brien West

Capital Structure



Capital structure*

Outstanding shares	134.2M
Closing price	C\$ 0.115
Market capitalization	C\$ 15.4M
Options	3.7M
Warrants	13.9M
Fully diluted	151.8M
52 week high / low	\$ 0.25 - \$0.10

* As August 28, 2018



Caisse de dépôt et placement
du Québec



OCIM
PRECIOUS METALS

 **Desjardins**

SIDEX

THE OLD O'BRIEN MINE

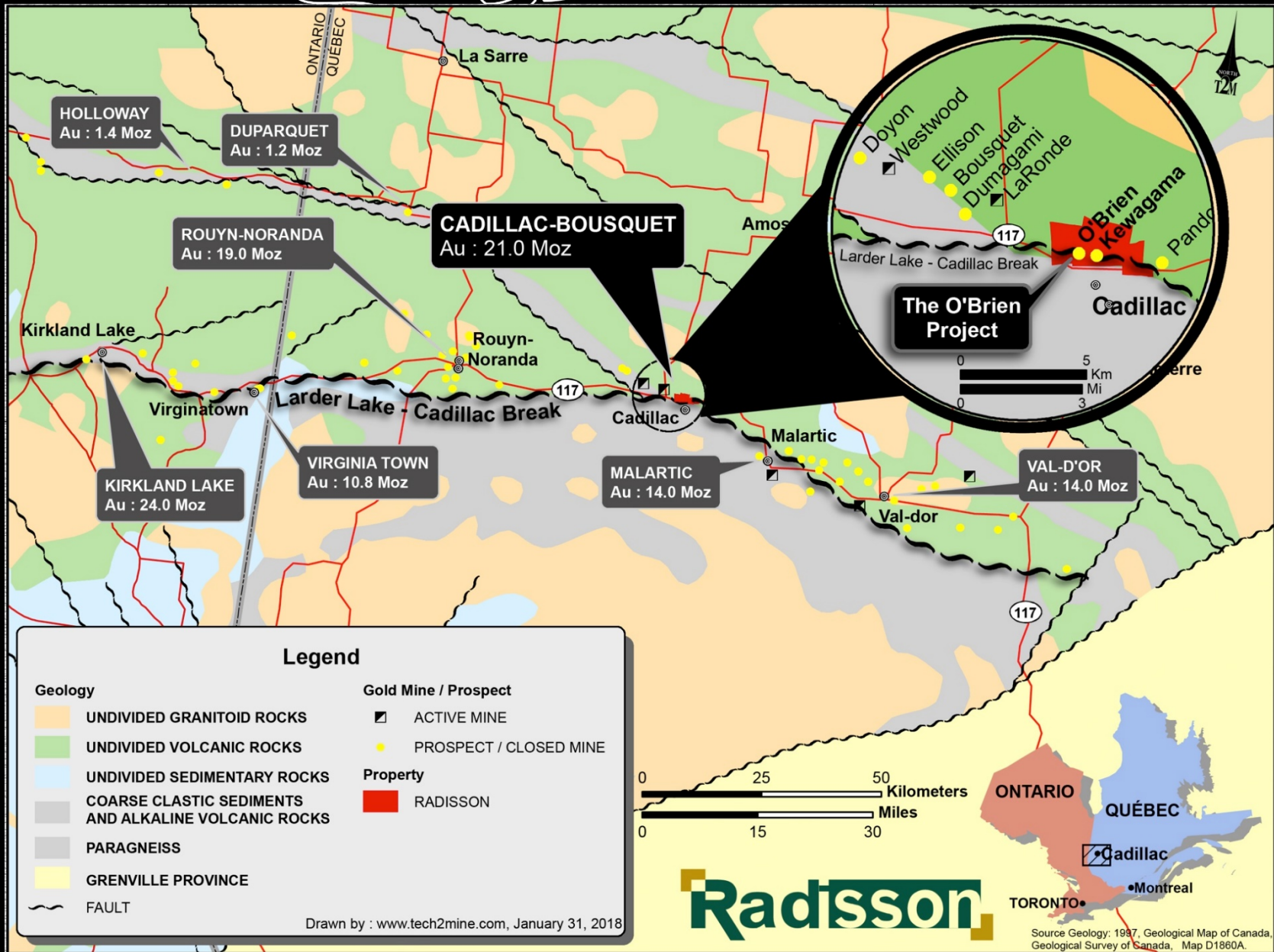
RICHEST MINE BY GRADE IN QUEBEC, CANADA



HISTORIC PRODUCTION
1.2M TONS AT 15.25 G/T AU FOR 587,121 OZ¹

1. 43-101 Technical report for the O'Brien project, Abitibi, Québec, InnovExplo, March 20, 2018

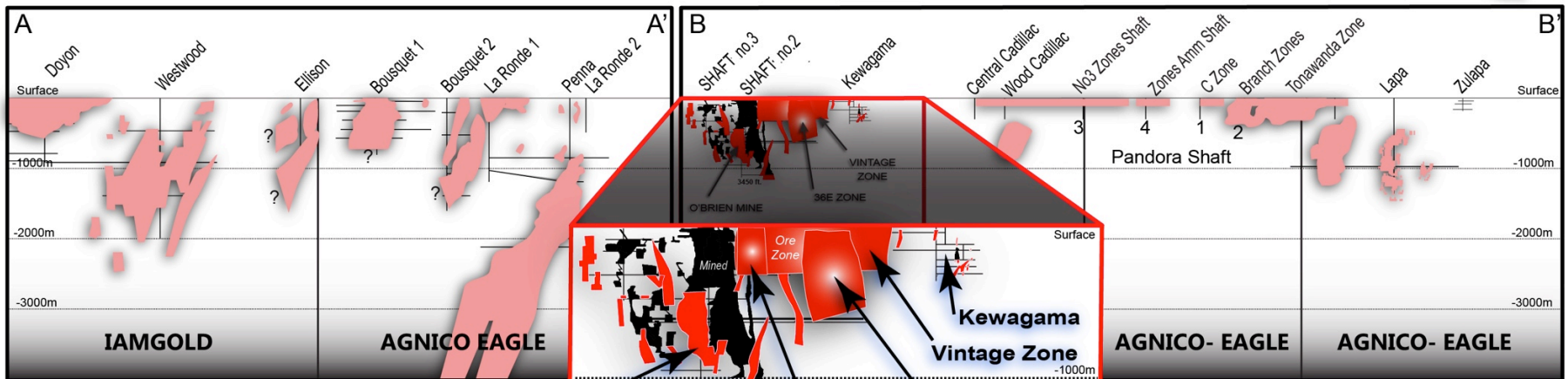
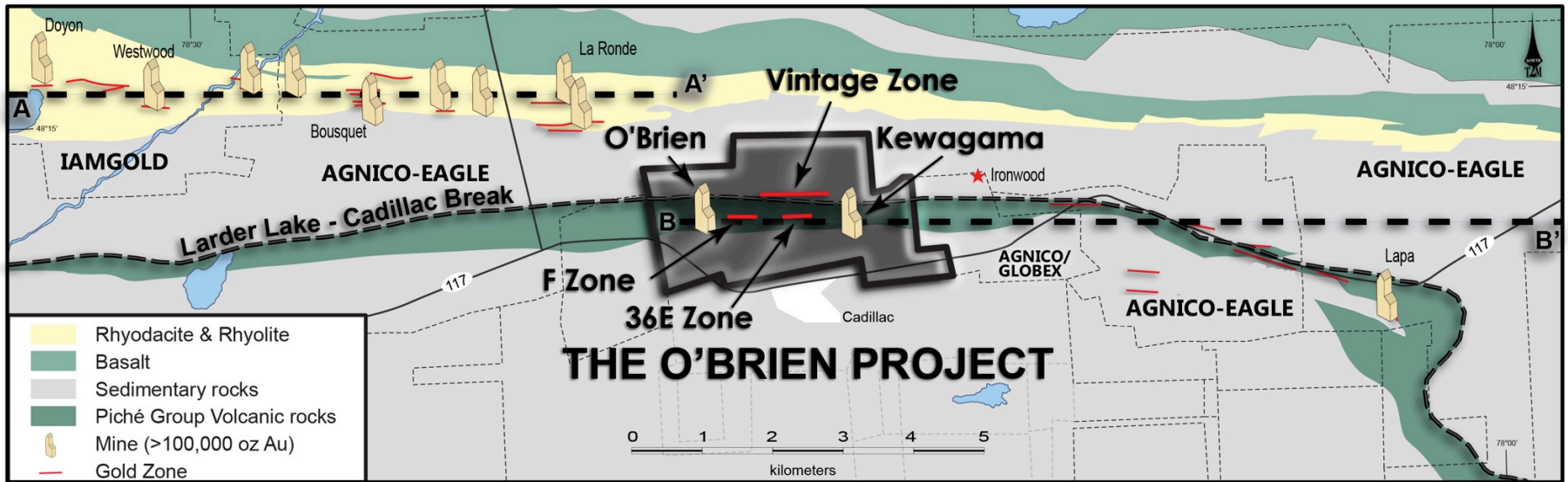
Regional setting



Source Geology: 1997, Geological Map of Canada, Geological Survey of Canada, Map D1860A.

World class mining Camp

Cadillac Mining Camp Geological Map



Drawn by www.tech2mine.com, January 31, 2018

THE O'BRIEN PROJECT

Q1: Resource estimate update 95% increase in the indicated category

Current Resources

	Indicated			Inferred		
	Tonnage	Grade g/t Au	Ounces	Tonnage	Grade g/t Au	Ounces
March 2018¹	1,125,447	6.45	233,491	1,157,021	5.22	194,084

Historic Resources

	Historic		
	Tonnage	Grade g/t Au	Ounces
Old O'Brien mine²	539,327	6.53	110,786

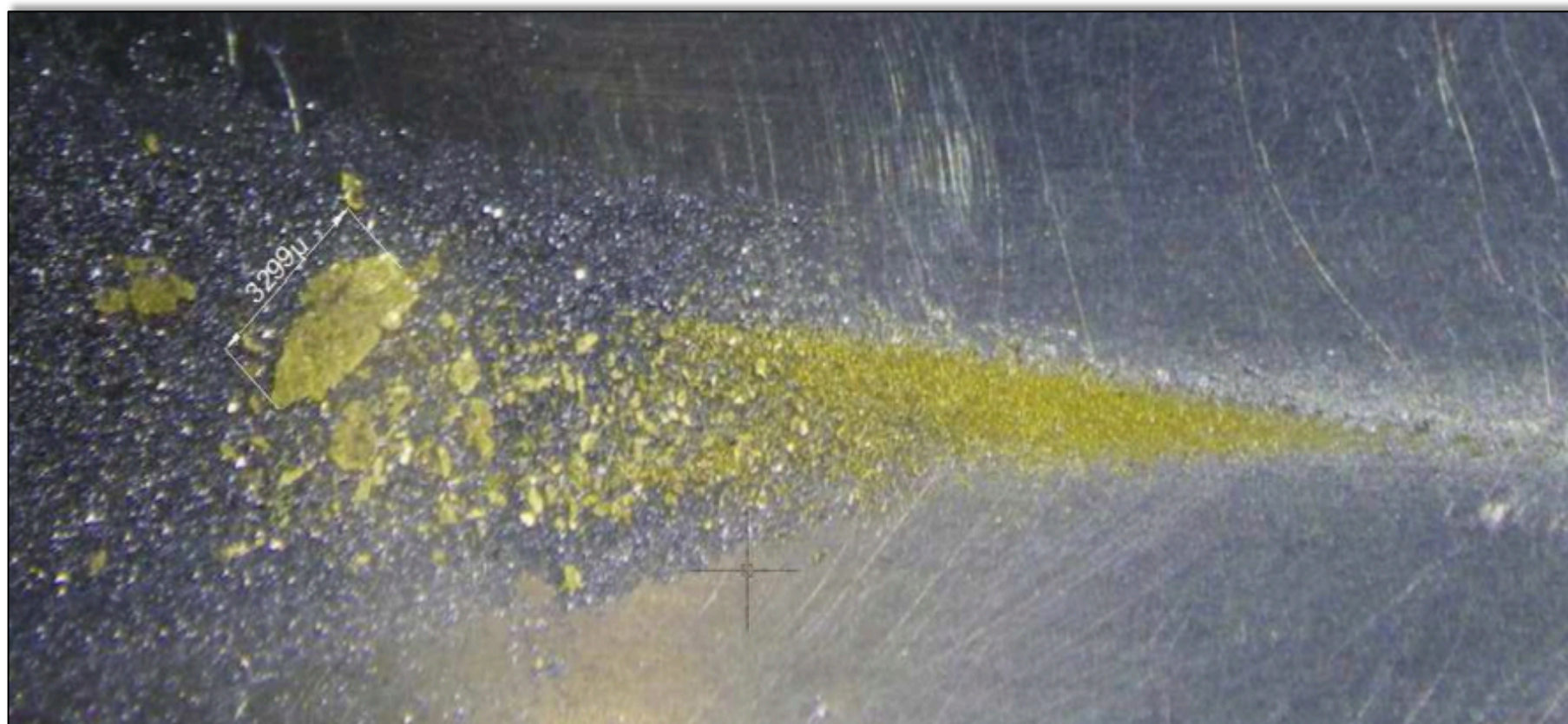
Historic Production

	Historic Production		
	Tonnage	Grade g/t Au	Ounces
Old O'Brien mine³	1,197,147	15.25	587,121

1. 43-101 Technical report for the O'Brien project, Abitibi, Québec, InnovExplo, March 20, 2018
2. These "resources" are historical in nature and should not be relied upon. It is unlikely they conform to current NI 43-101 criteria or to CIM Standards and Definitions, and they have not been verified to determine their relevance or reliability.
3. 43-101 Technical report for the O'Brien project, Abitibi, Québec, InnovExplo, March 20, 2018

Preliminary metallurgical test

- **11.13 g/t Au** average grade obtained^{1,2}
 - ✓ **53.3%** above sample grade
- **59.2%** recovery by gravity concentration²
- **Total** recovery of up to **94%**²



1. Sample tested totalled 61 kg and graded 7.26 g/t Au. It consisted of composite core lengths from the main structures of 36E area.
2. See press release of August 26, 2014

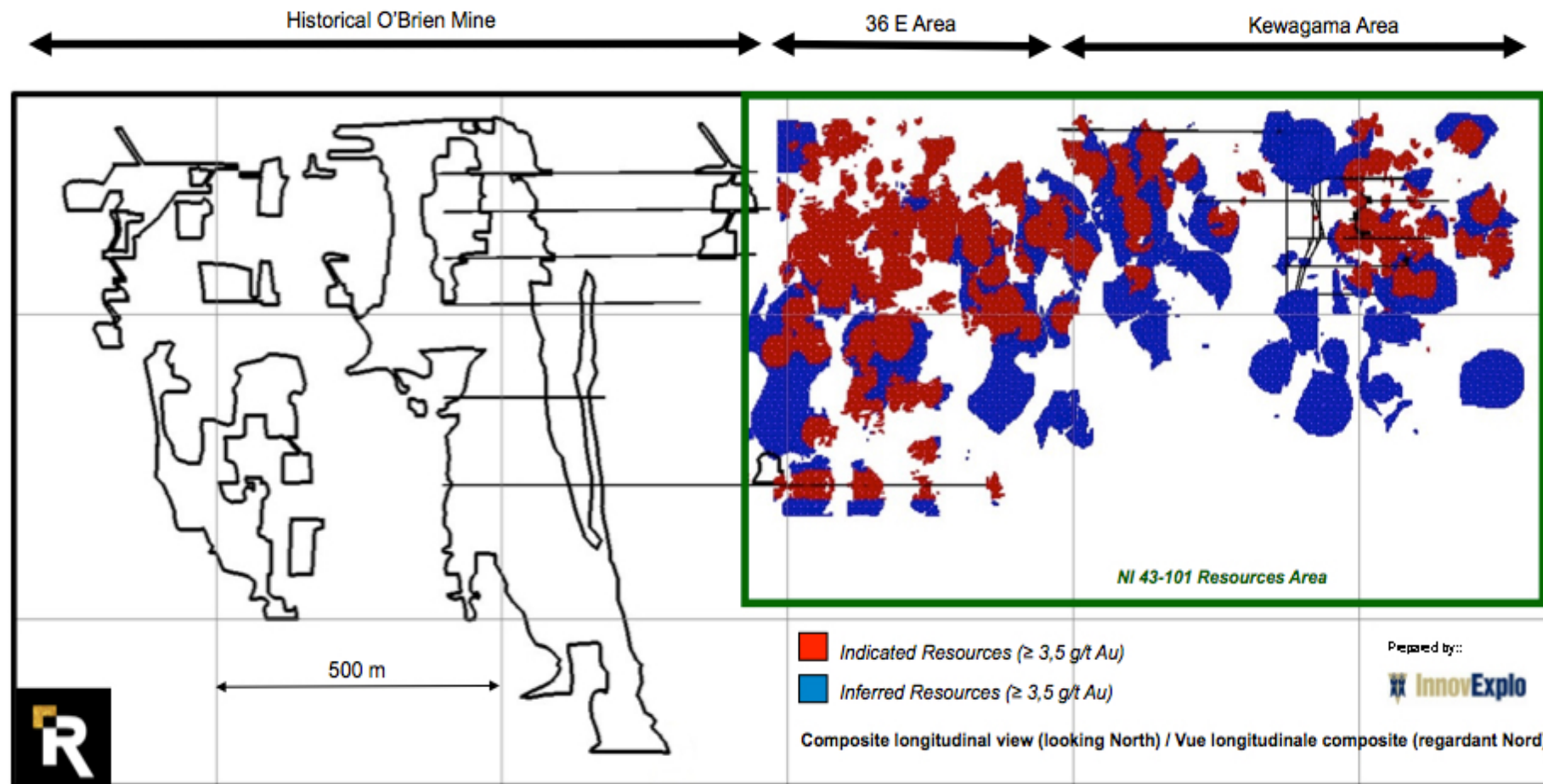
5 mills available within 75 km



2018 Resource estimate update 29,787 m of drilling incorporated



2018 O'Brien Project Resources

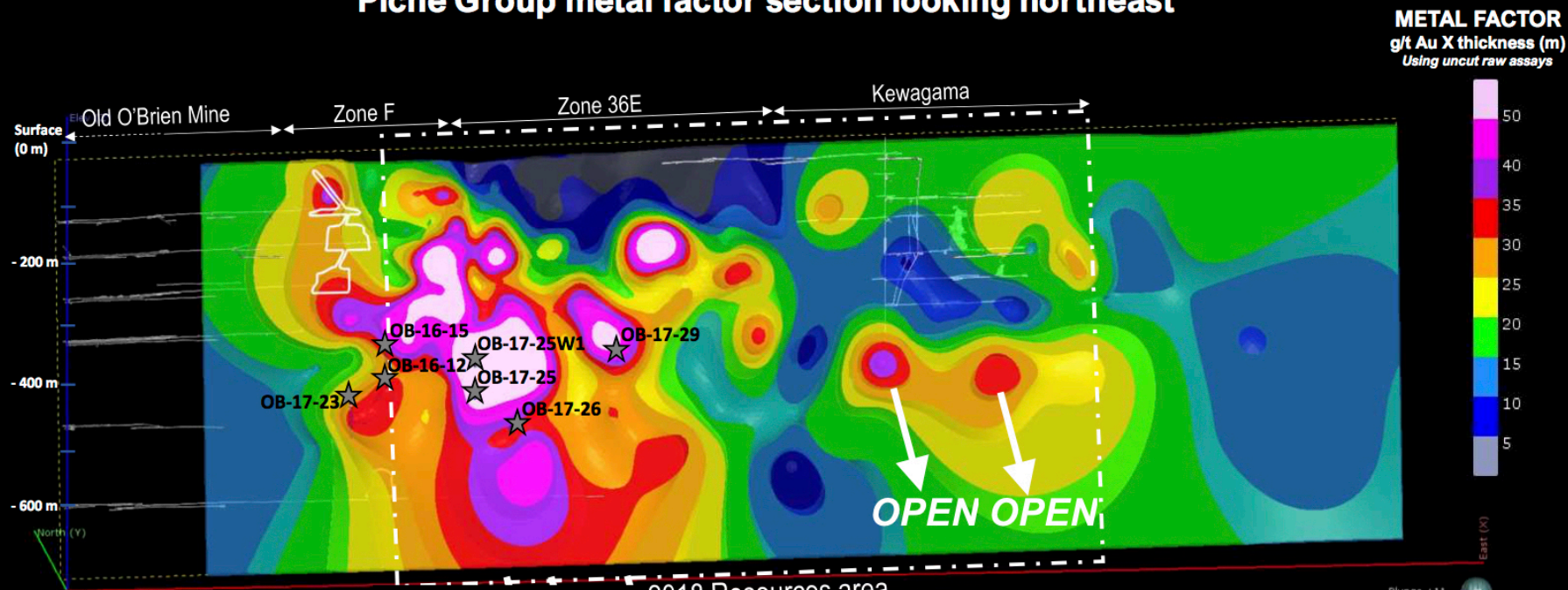


Enrichment Vector defined on 36E with 3D modern technique

Key for exploration at depth



Longitudinal Cut, thickness 25m
Piché Group metal factor section looking northeast

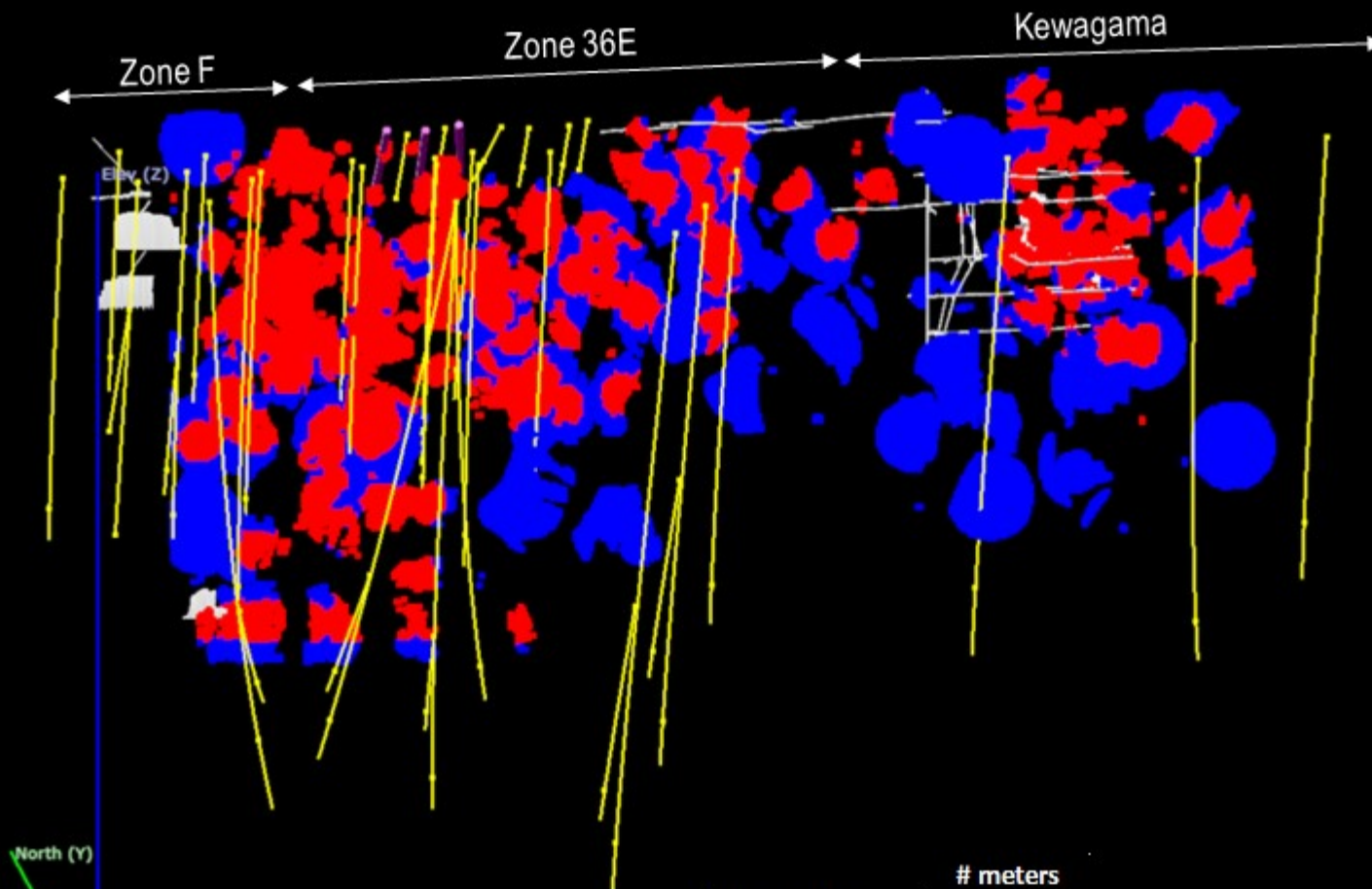


OPEN

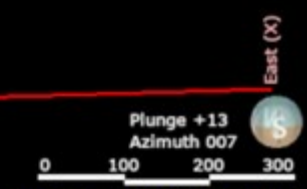
Hole	From (m)	To (m)	Length (m)	Grade Au
OB-16-12	520.0	536.0	16.0	3.0
OB-16-15	444.0	450.0	6.0	5.0
OB-17-23	532.0	535.0	3.0	11.9
and	614.6	625.5	10.9	2.5
OB-17-25	417.0	510.0	93.0	1.0
OB-17-25W1	394.0	448.1	54.1	2.8
OB-17-26	460.0	507.0	47.0	1.2
OB-17-29	354.5	374.1	19.6	4.5



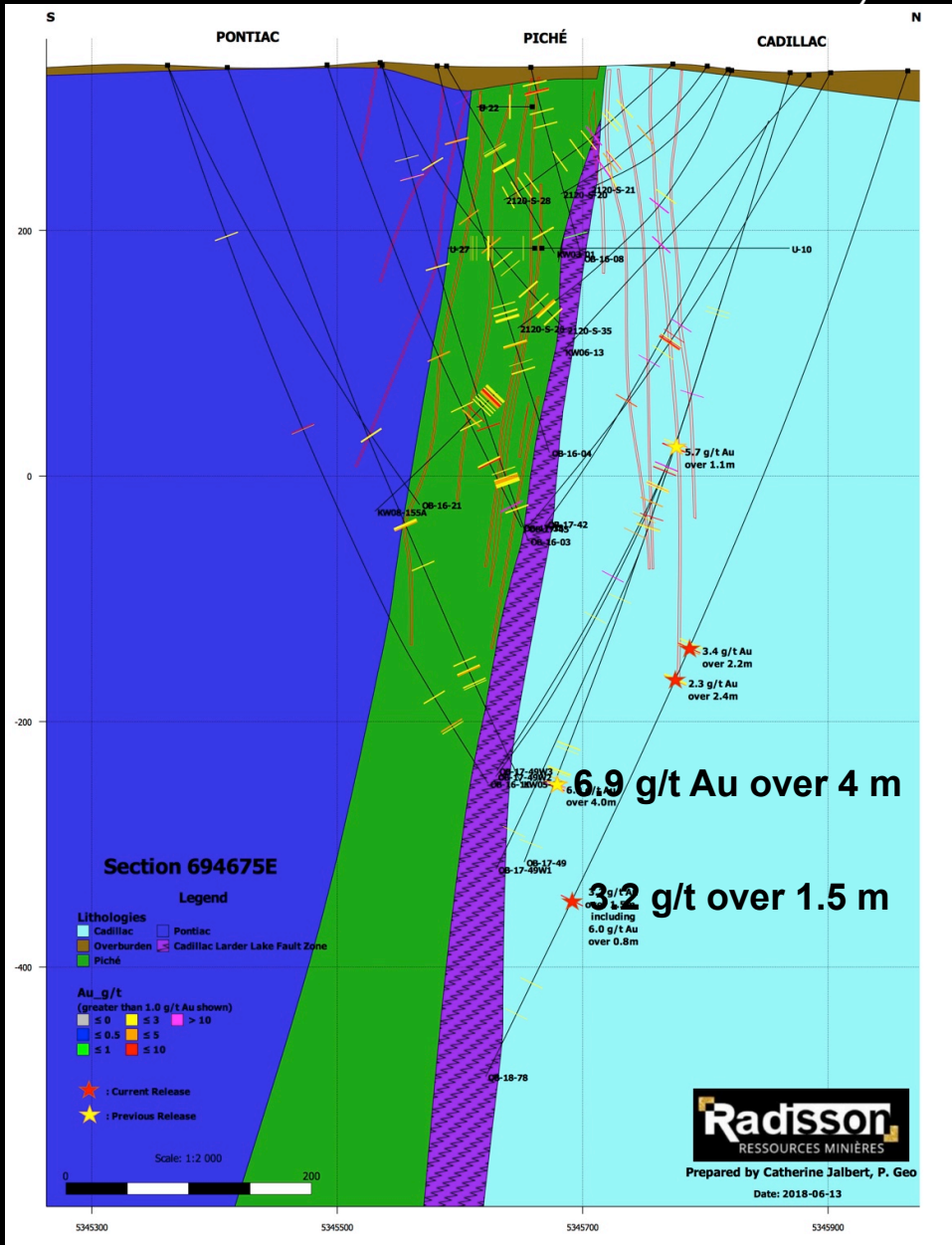
Towards 1,000 oz per vertical meter



	# meters
Recent drilling (purple) (results pending)	401
Planned (yellow)	19200
Total	19601

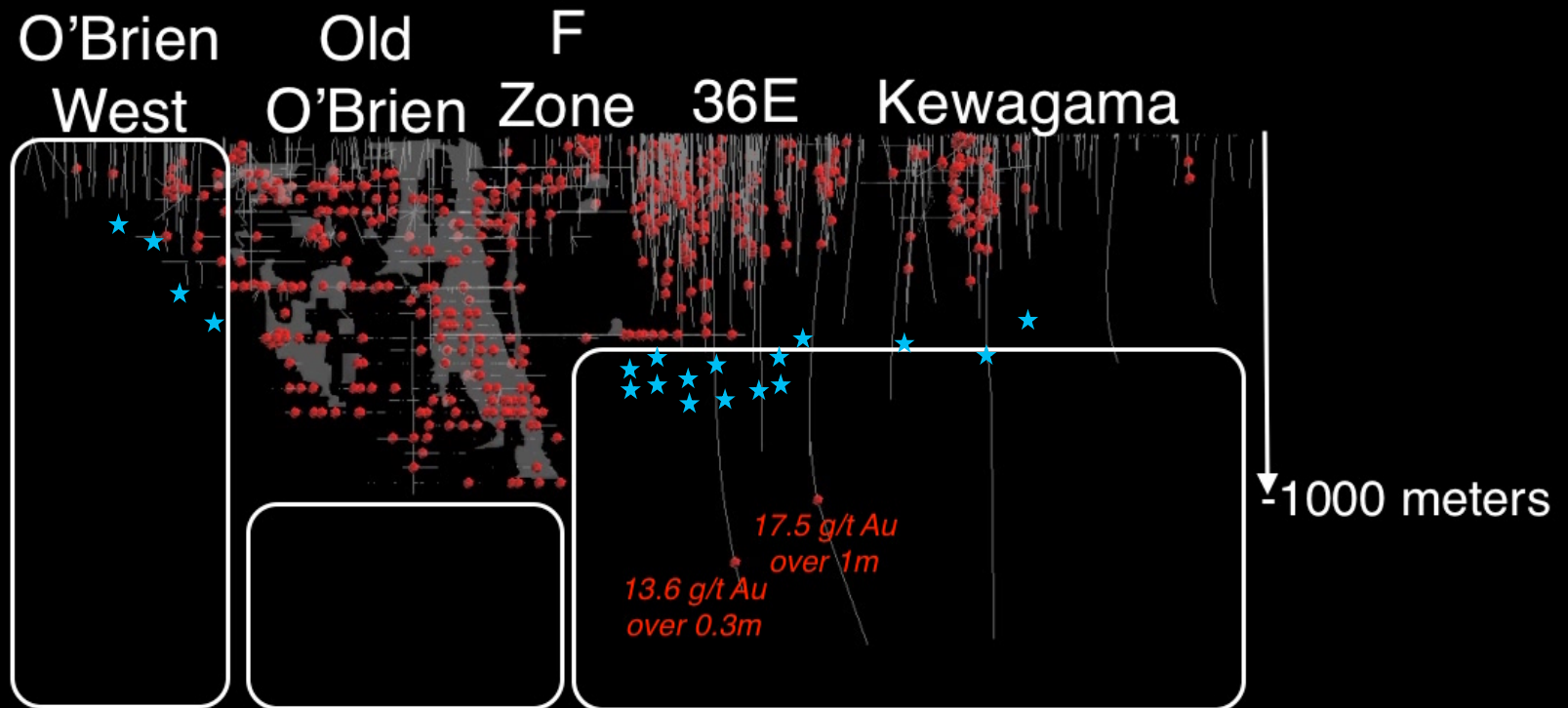


Vintage Zone - Discovery north of the deposit



Exploration potential
(>12 000m planned)

Drilling results > 10 g/t Gold



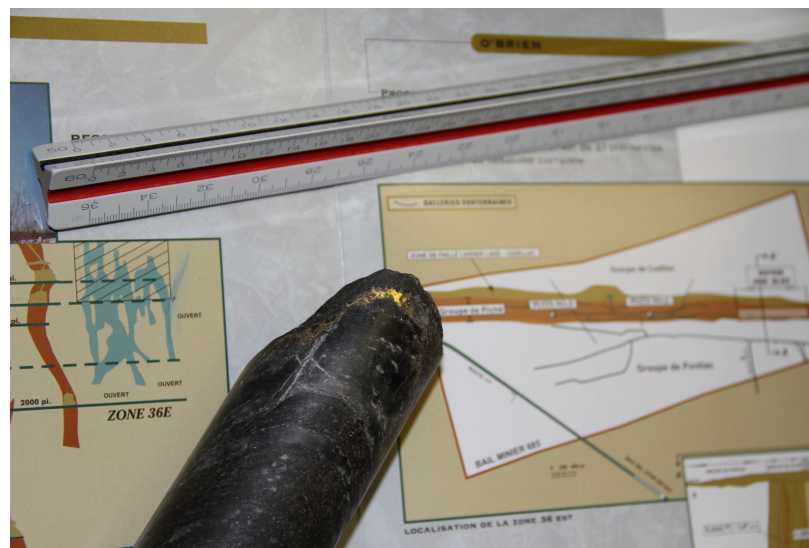
★ Exploration target

● Drilling results > 10 g/t Gold



Project checklist

- ✓ Under-explored project open along strike and at depth
- ✓ High potential for additional discoveries
- ✓ Project explored year-round
- ✓ High-grade steeply dipping mineralization
 - Comparable to historic and other mines in the area
- ✓ Metallurgical recoveries exceeding 94%
- ✓ Easily accessible via a highway in the heart of Abitibi
- ✓ Power grid passes over the property
- ✓ Surrounded by best-in-class operations
- ✓ Overcapacity of milling in the area



- ✓ **Results pending from 3 near-surface drill holes**
 - ✓ In vertical extension of bulk of current resources

- ✓ **Closing of current financing**
 - ✓ +20 km of drilling targets defined
 - ✓ Advanced engineering toward bulk sample
 - ✓ Resource estimate update including the “F Zone”

- ✓ **3D Geological model**
 - ✓ Key for exploration at depth (below 550 meters)
 - ✓ Improving investor knowledge of the project



Contact Info

Hubert Parent-Bouchard
Corporate development
819.763.9969
hpbouchard@radissonmining.com

Radisson mining resources Inc.
700 Dallaire ave, 2nd floor
Rouyn-Noranda. Qc J9X 4V9
www.radissonmining.com

A photograph of a rock specimen with gold veins. The rock is dark grey and has several bright yellow-gold veins and spots. A vertical gold bar is placed behind the rock for scale.

**GOLD RUNS
IN OUR
VEINS**



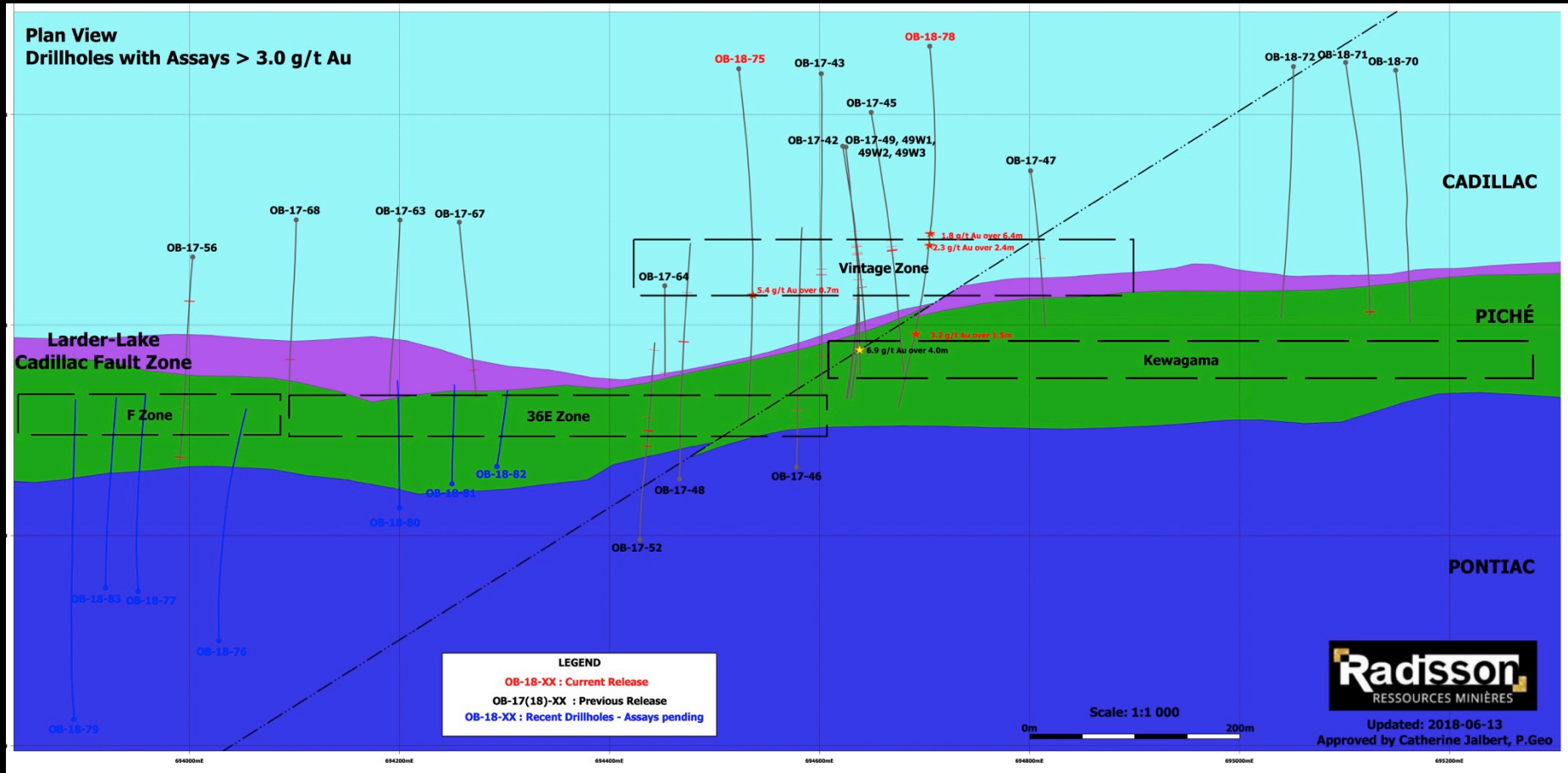
APPENDIX "A"

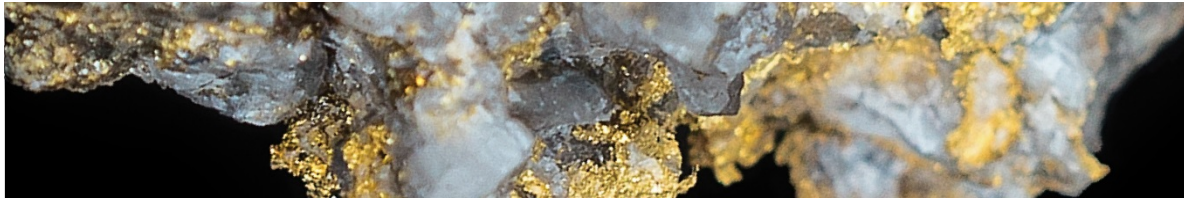
Board of directors

<p>DENIS LACHANCE, Eng. Chairman of the Board</p>	<ul style="list-style-type: none"> • President of Koniambo Nickel SAS > 7G\$ • Vice president operations at Xstrata Nickel (Raglan) • GM for Noranda Inc. • GM for TVX Gold Inc. (Casa Berardi) • GM for Agnico Eagle Mines (Joutel division and Goldex project).
<p>MARIO BOUCHARD President & CEO</p>	<ul style="list-style-type: none"> • 25 years in the Brokerage industry • President of Admirio Industriel inc. • Director of Rouyn-Noranda branch of CIM for 26 years
<p>RÉJEAN GOURDE, Eng. Director</p>	<ul style="list-style-type: none"> • President & CEO of Reunion Gold • More than 40 years of experience in the industry • 12 years with Falconbridge and Ressources Aiguebelle • Senior VP of Guiana Shield division of Cambior
<p>JEAN DION Director</p>	<ul style="list-style-type: none"> • Visionary and one of the most influential entrepreneurs in Rouyn-Noranda • Founded the Dion group in the 90s (more than 350 employees now)
<p>TONY BRISSON Director</p>	<ul style="list-style-type: none"> • 26 years of experience in Geology • Exploration Manager for Goldcorp Inc. (Eleonore Mine) • VP of exploration Cogitore Resources Inc. • Chief Geologist for Cambior Inc.
<p>LUC SIMONEAU Director</p>	<ul style="list-style-type: none"> • President & founder of Micro ML inc. a computer and IT firm

MARIO BOUCHARD President & CEO	<ul style="list-style-type: none">• See previous page
JACQUES LÉVESQUE, CPA, CA CFO	<ul style="list-style-type: none">• Director of Anaconda Mining Inc.• CFO of Orex Exploration Inc. from 2009 to 2017• CA, CPA and income tax specialist since 1971
TONY BRISSON, P. Geo, QP under NI 43-101	<ul style="list-style-type: none">• See previous page
CATHERINE JALBERT, P. Geo, Exploration Manager, QP	<ul style="list-style-type: none">• Close to 10 years of experience in Geology at InnovExplo• Extensive expertise in 3D modelling• Work with more than 20 mining and exploration companies
HUBERT P. BOUCHARD Corporate Development	<ul style="list-style-type: none">• Joined Radisson in 2014• Treasurer and Director of Rouyn-Noranda branch of CIM• 7 years in accounting for La Capitale assurances générales and a renowned mining contractor in the Abitibi area.

Plan view of the O'Brien project





2018 O'Brien Project Mineral Resource Estimate at a 3.50 g/t Au cut-off, Sensitivity at other cut-off scenarios

Indicated					Inferred				
Area	Cut-off	Tonnage	Grade g/t Au	Ounces	Area	Cut-off	Tonnage	Grade g/t Au	Ounces
All Areas	2.50	1,800,104	5.14	297,466	All Areas	2.50	2,054,524	4.22	278,644
	3.00	1,409,734	5.81	263,108		3.00	1,519,190	4.74	231,612
	3.50	1,125,447	6.45	233,491		3.50	1,157,021	5.22	194,084
	4.00	910,885	7.09	207,696		4.00	830,615	5.80	154,833
	4.50	751,753	7.70	186,019		4.50	538,938	6.65	115,140
	5.00	624,734	8.30	166,671		5.00	486,200	8.52	133,245

1. Source 43-101 Technical report for the O'Brien project, Abitibi, Québec, InnovExplo, March 20, 2018

Resource expansion drilling

Main results from 2016-2018

Drill hole	Core length (m)	Grade
		Au
OB-16-1	1.7	3.4
OB 16-3	1.0	12.8
OB-16-3	2.0	3.2
OB-16-4	6.9	3.1
OB-16-5	1.0	5.0
OB-16-5	0.6	11.0
OB-16-5	1.3	17.6
OB-16-6	2.0	4.3
OB-16-7	3.0	16.2
OB-16-8	2.0	5.9
OB-16-09	2.0	4.0
OB-16-09	3.0	3.2
OB-16-10	2.0	8.6
OB-16-12	16.0	3.0
<i>Including</i>	5.0	5.0
OB-16-14	2.5	20.2
OB-16-14	3.0	6.3
OB-16-15	6.0	5.0
OB-16-15	1.5	4.9
OB-16-17	0.6	11.5
OB-16-19	3.8	5.8
OB-16-20	1.5	10.5
OB-16-20	4.0	4.3
OB-16-21	3.1	3.3
<i>Including</i>	1.1	6.4
<i>Including</i>	2.1	4.3

Drill hole	Core length (m)	Grade
		Au
OB-17-22	7.5	4.7
<i>Including</i>	3.0	10.3
OB-17-23	3.0	4.4
<i>Including</i>	3.0	11.9
<i>And</i>	1.4	13.9
OB-17-23W1	2.0	4.9
OB-17-24	9.0	3.2
<i>Including</i>	5.3	4.3
OB-17-25	93.0	1.0
	1.0	5.0
<i>Including</i>	2.0	8.5
	2.0	4.8
<i>And including</i>	7.0	3.7
<i>Which includes</i>	1.0	19.7
OB-17-25W1	54.1	2.8
<i>Including</i>	8.0	12.9
OB-17-26	1.4	3.7
	47.0	1.2
<i>Including</i>	9.0	2.1
	3.0	6.5
OB-17-29	19.6	4.5
<i>Including</i>	1.0	8.6
<i>And</i>	1.2	54.6
OB-17-30	24.3	1.5
<i>Including</i>	1.0	4.6
<i>and</i>	0.6	19.7

Drill hole	Core length (m)	Grade
		Au
OB-17-35	1.0	6.9
<i>and</i>	5.7	4.0
<i>Including</i>	1.0	20.6
OB-17-38	15.3	1.1
OB-17-40	1.0	5.2
OB-17-44	45.0	1.3
<i>Including</i>	1.0	17.8
<i>and</i>	3.0	3.3
<i>and</i>	3.0	8.1
OB-17-50	22.0	2.1
<i>Including</i>	6.1	6.2
<i>which includes</i>	3.1	9.1
OB-17-52	6.0	10.0
<i>Including</i>	2.0	23.6
OB-17-52	6.0	7.4
<i>Including</i>	0.5	78.9
OB-17-53	18.4	1.7
<i>Including</i>	0.5	23.1
<i>and</i>	1.0	4.2
OB-17-54	1.5	4.5
OB-17-54W1	1.0	4.0
OB-17-55	21.4	3.9
<i>Including</i>	7.1	6.9
OB-17-56	30.7	0.9
<i>Including</i>	1.3	4.6
OB-17-60	8.3	4.4