

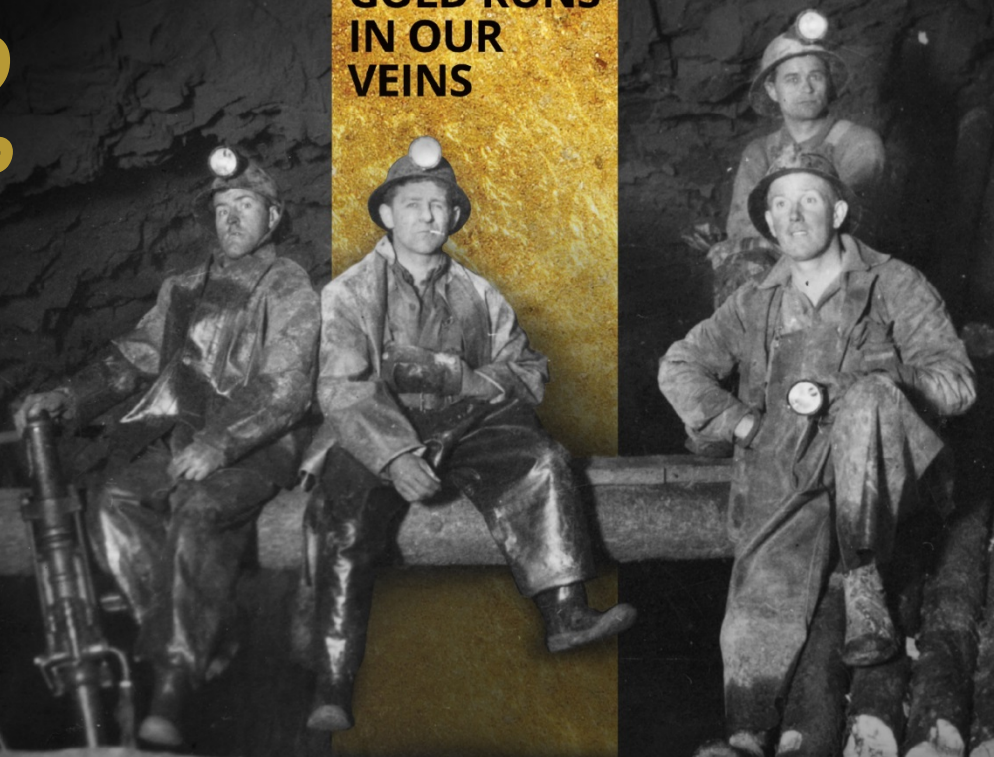


TSX.V: RDS

***CREATING VALUE IN A
WORLD RENOWNED
GOLD MINING CAMP***

February 2019

**GOLD RUNS
IN OUR
VEINS**



Cautionary Statement



CAUTIONARY STATEMENT REGARDING FORWARD-LOOKING INFORMATION

Except for historical information certain statements included in this presentation are forward-looking statements within the meaning of Canadian securities laws. Such statements may include words such as “Anticipates”, “schedule”, “projects”, “plans”, “targets”, “programs”, “continues”, “estimates”, “could”, “should”, “would” or “will”. Forward-looking statements made in this presentation involve significant risks and uncertainties. These risks and uncertainties include the inherent risks involved in the exploration and development of mineral properties. the uncertainties involved in interpreting drilling results and other geological data. fluctuating metal prices. the possibility of project cost overruns or unanticipated costs and expenses. uncertainties relating to the availability and costs of financing needed in the future. and other factors. The Corporation disclaims any intention or obligation to update forward-looking statements if circumstances or management’s estimates or opinions should change. The reader is cautioned not to place undue reliance on forward-looking statements.

All references to currency made in this presentation are in Canadian dollars unless otherwise stated.

Richard Nieminen, P.Geo., acts as a Qualified Person as defined in National Instrument 43-101 and has reviewed and approved the technical information in this presentation.

THE O'BRIEN PROJECT

100% OWNED

EXPERIENCED
TEAM WITH
+13%
OWNERSHIP

LOCATED IN A WORLD RENOWNED MINING CAMP
AND A TOP TIER MINING JURISDICTION

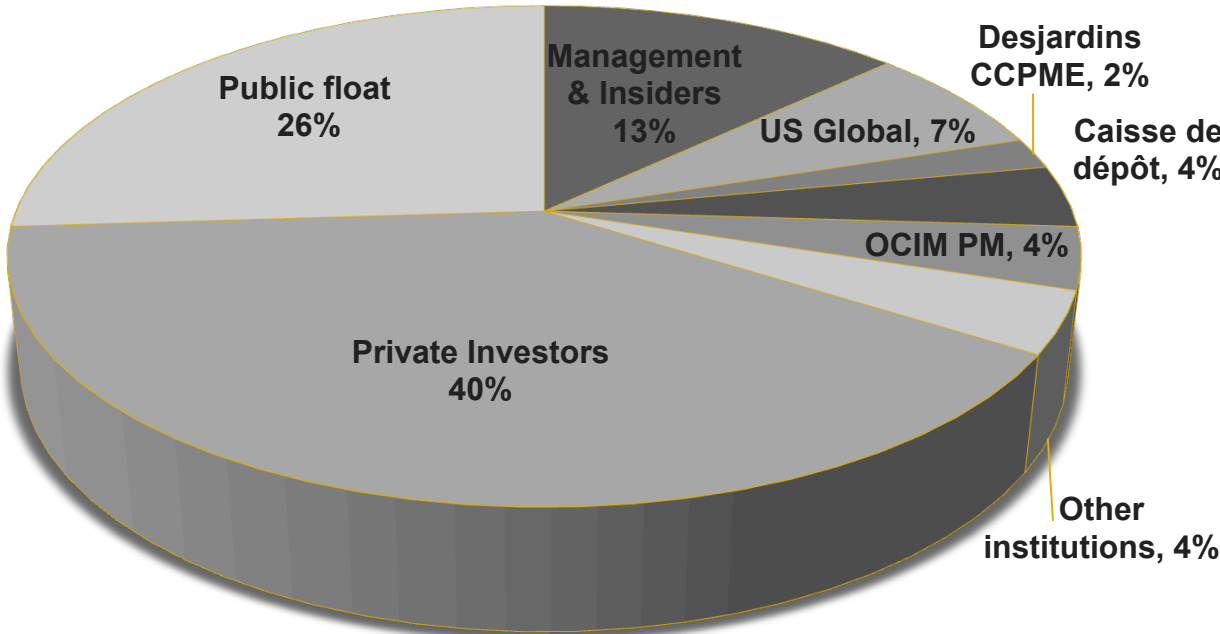
NEW MODEL
UNDERWAY

HIGH
EXPLORATION
POTENTIAL

2016-2018
+45,000 M
DRILLED AT
\$ 100 / M

2020
UNDERGROUND
EXPLORATION
PROGRAM

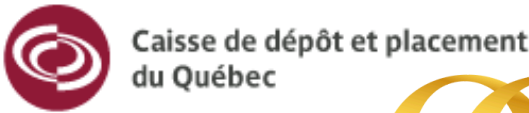
Investment summary



Capital structure*

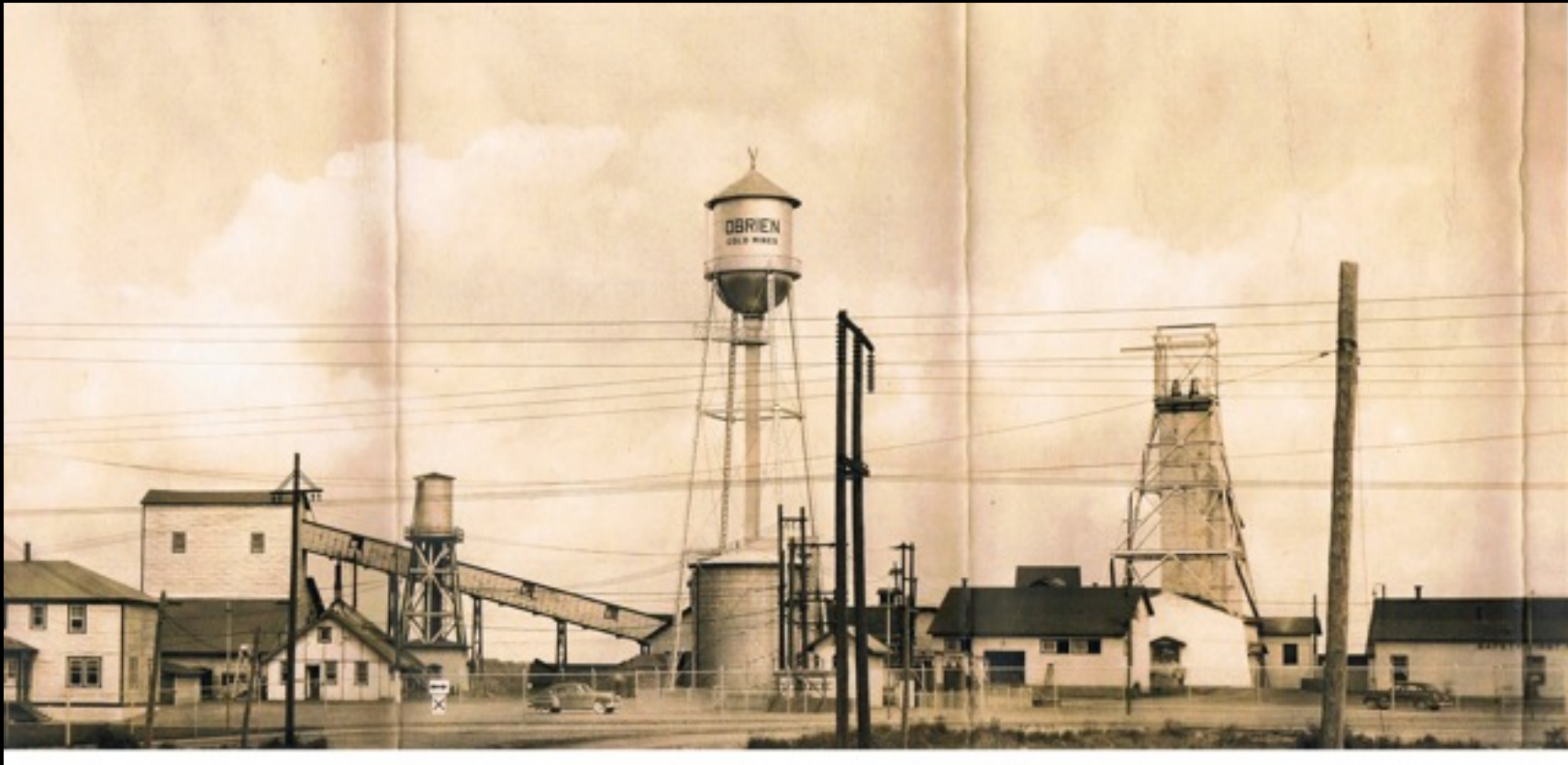
Outstanding shares	137.2M
Closing price	C\$ 0.10
Market capitalization	C\$ 13.7M
Options	4.1M
Warrants	7.2M
Fully diluted	148.5M
52 week high / low	\$ 0.25 - \$0.10

* As January 25, 2019



THE OLD O'BRIEN MINE

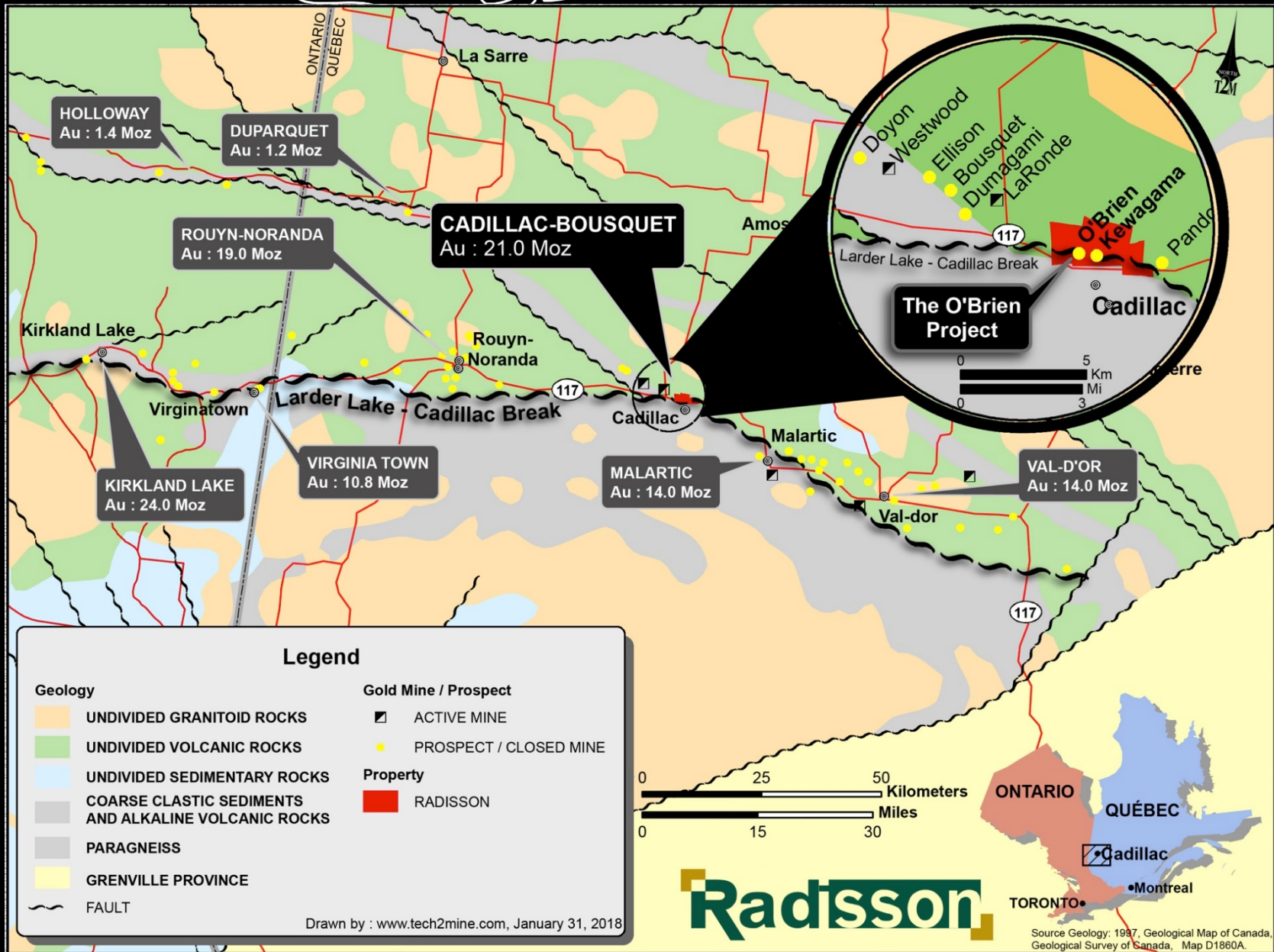
RICHEST MINE BY GRADE IN QUEBEC, CANADA



HISTORIC PRODUCTION
1.2M TONS AT 15.25 G/T AU FOR 587,121 OZ¹

1. 43-101 Technical report for the O'Brien project, Abitibi, Québec, InnovExplo, March 20, 2018

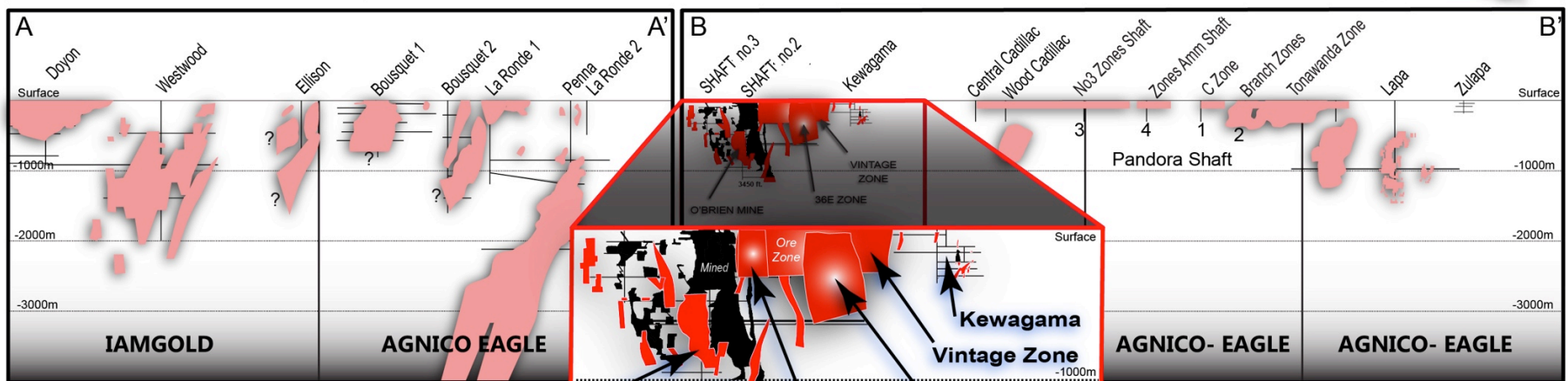
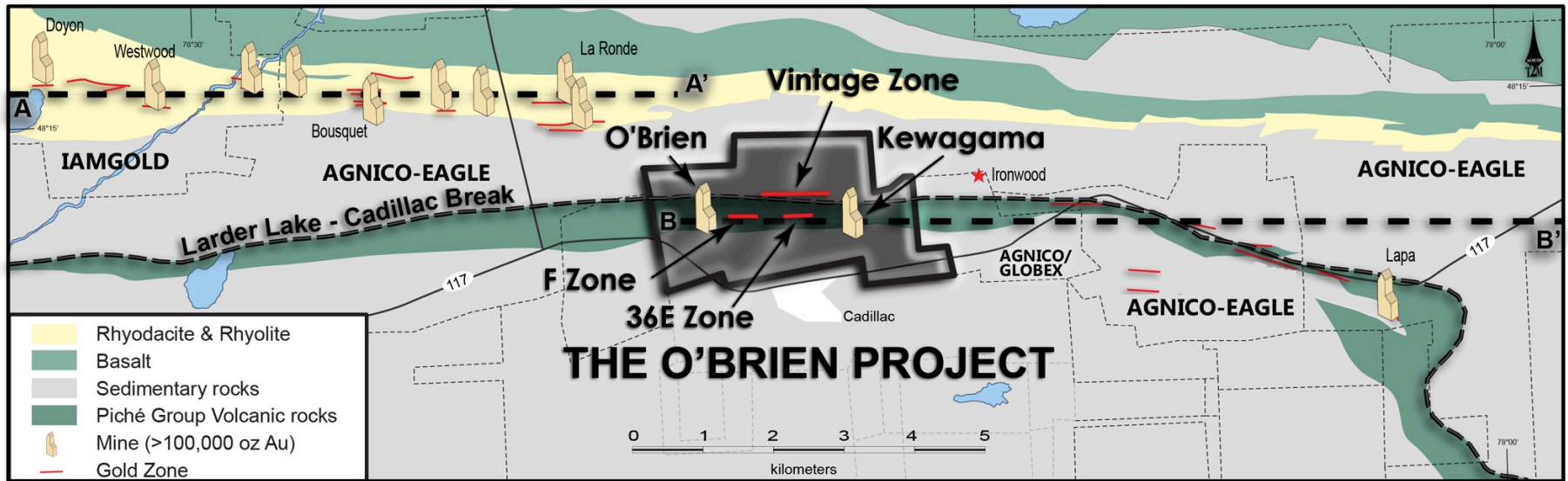
Regional setting



Source Geology: 1997, Geological Map of Canada, Geological Survey of Canada, Map D1860A.

World class mining Camp

Cadillac Mining Camp Geological Map



Drawn by www.tech2mine.com, January 31, 2018

Resource estimate update New interpretation underway



Current Resources

	Indicated resources			Inferred resources		
	Tonnage	Grade g/t Au	Ounces	Tonnage	Grade g/t Au	Ounces
March 2018¹	1,125,447	6.45	233,491	1,157,021	5.22	194,084
April 2013²	560,000	5.91	106,000	317,000	6.53	67,000
Variation	+120%			+190%		

Historic Resources

	Historic		
	Tonnage	Grade g/t Au	Ounces
Old O'Brien mine²	539,327	6.53	110,786

Historic Production

	Historic Production		
	Tonnage	Grade g/t Au	Ounces
Old O'Brien mine³	1,197,147	15.25	587,121

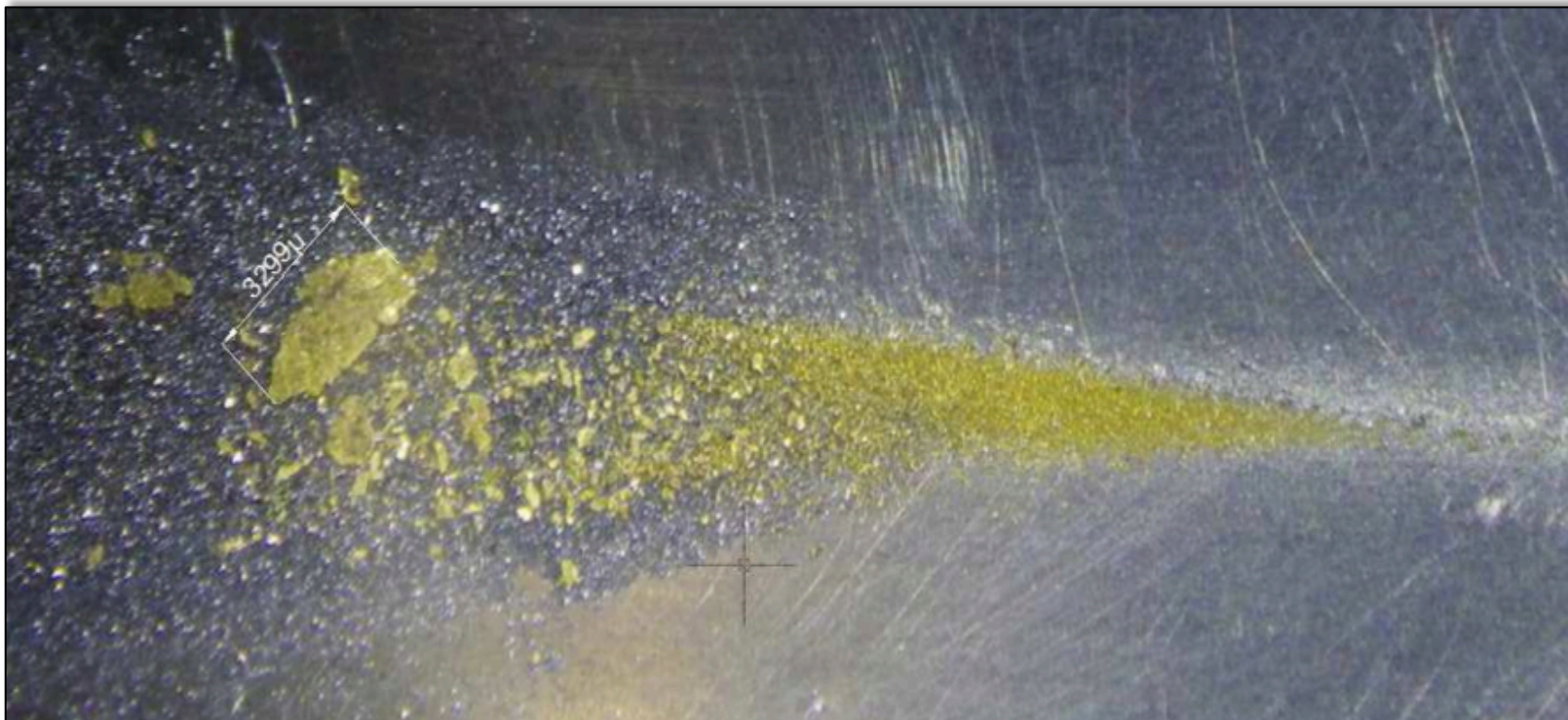
1. 43-101 Technical report for the O'Brien project, Abitibi, Québec, InnovExplo, March 20, 2018
2. These "resources" are historical in nature and should not be relied upon. It is unlikely they conform to current NI 43-101 criteria or to CIM Standards and Definitions, and they have not been verified to determine their relevance or reliability.
3. 43-101 Technical report for the O'Brien project, Abitibi, Québec, InnovExplo, March 20, 2018

5 mills available within 75 km



Preliminary metallurgical test

- **11.13 g/t Au** average grade obtained^{1,2}
 - ✓ **53.3%** above sample grade
- **59.2%** recovery by gravity concentration²
- **Total** recovery of up to **94%**²
- ✓ **Additional metallurgical testings underway**
 - ✓ Measure possible high grading in projected bulk sample area

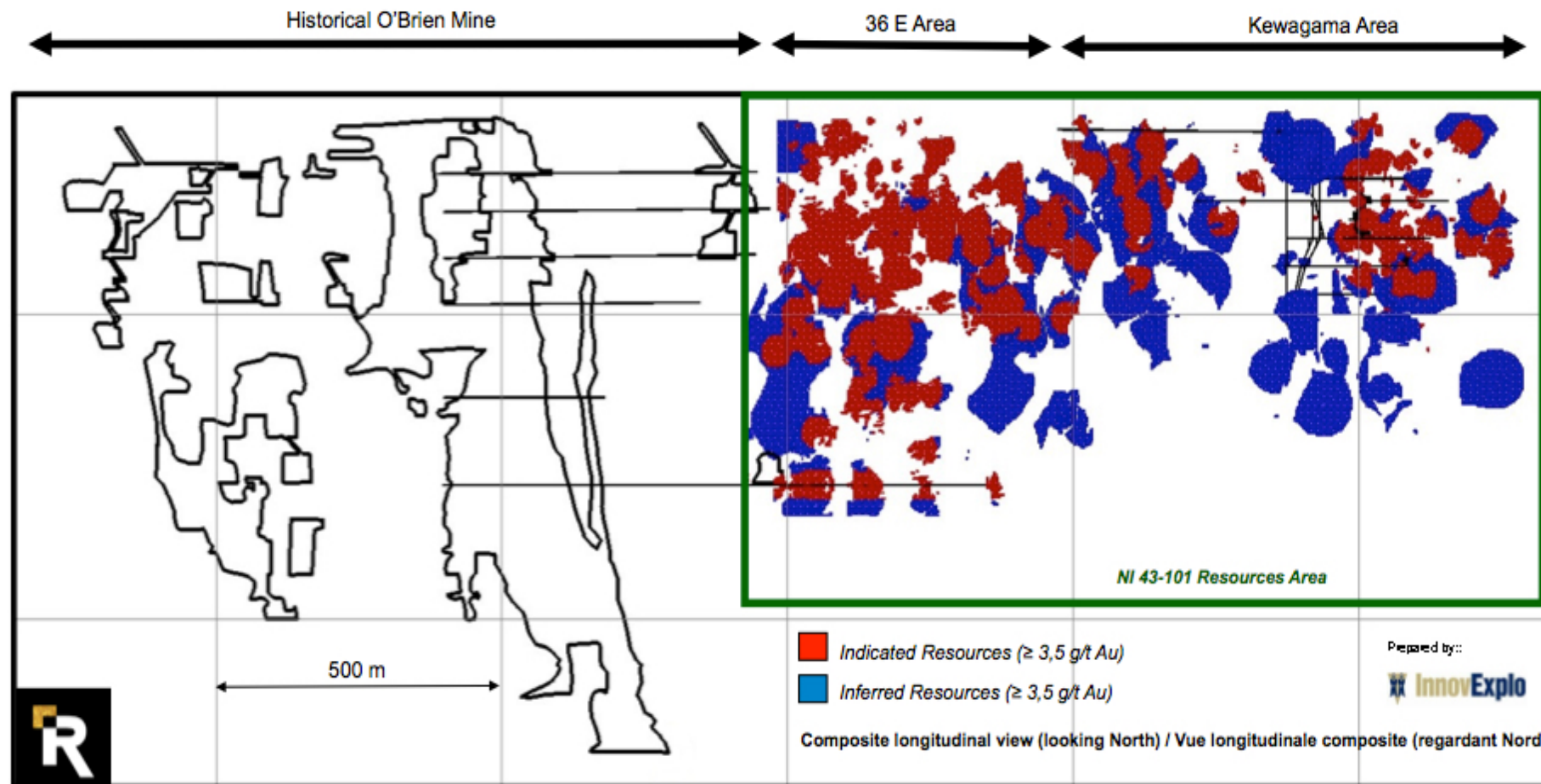


1. Sample tested totalled 61 kg and graded 7.26 g/t Au. It consisted of composite core lengths from the main structures of 36E area.
2. See press release of August 26, 2014

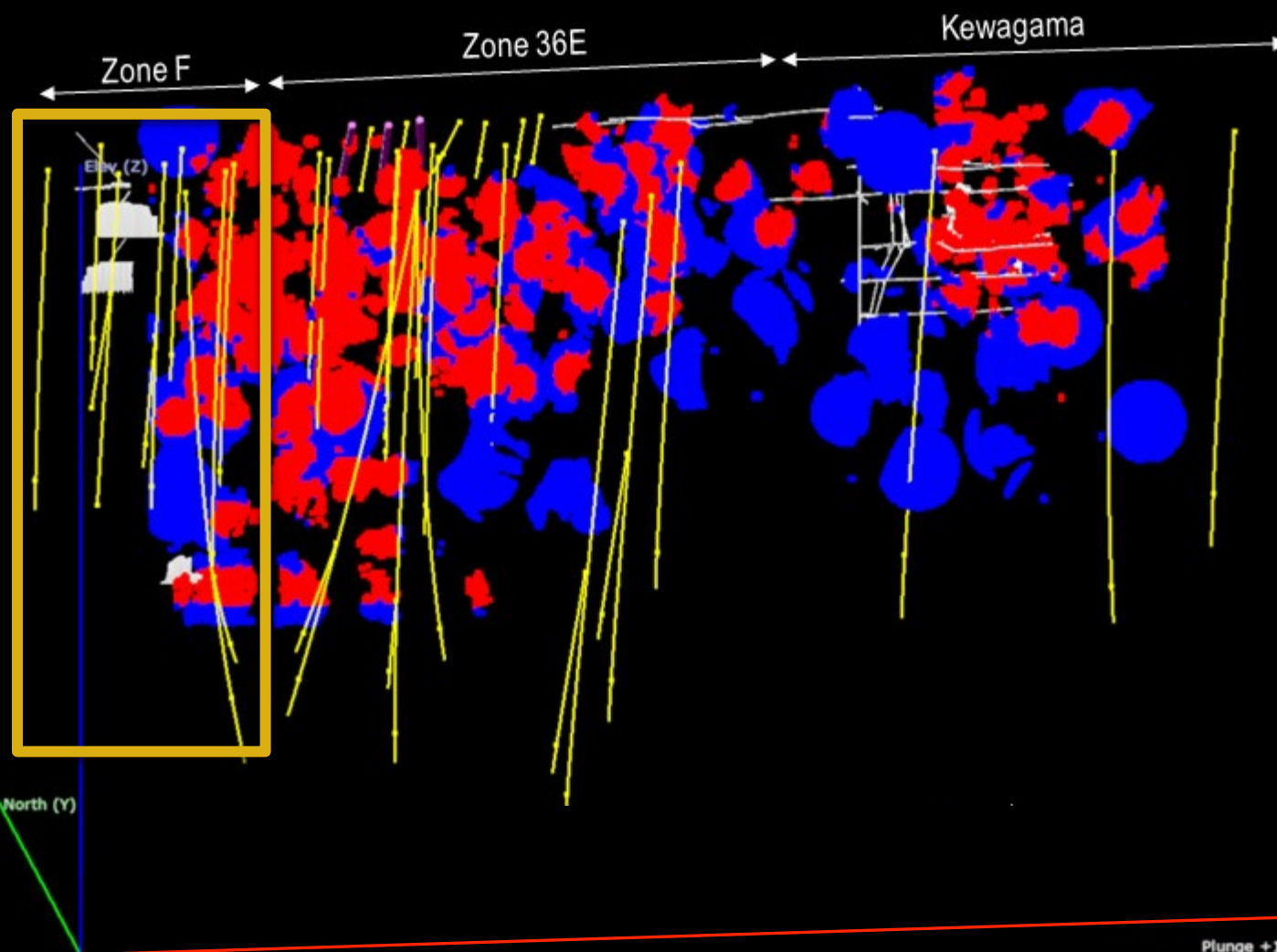
2018 Resource estimate update 29,787 m of drilling incorporated



2018 O'Brien Project Resources



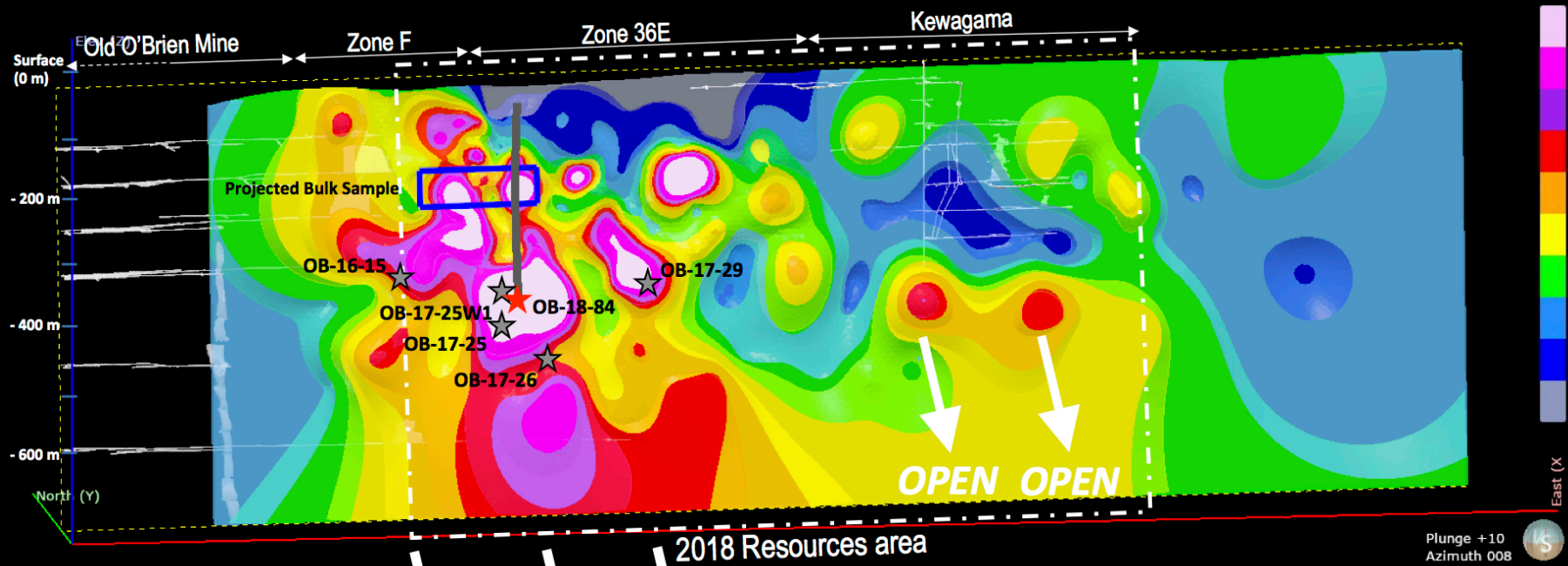
Towards 1,000 oz per vertical meter Assays pending from 5,000 m drill program



OB-18-84 → 37.52 g/t Au over 12.80 m and 8.74 g/t Au sur 12.20 m Target defined with « first » 3D model



METAL FACTOR
g/t Au X thickness (m)
Using uncut raw assays



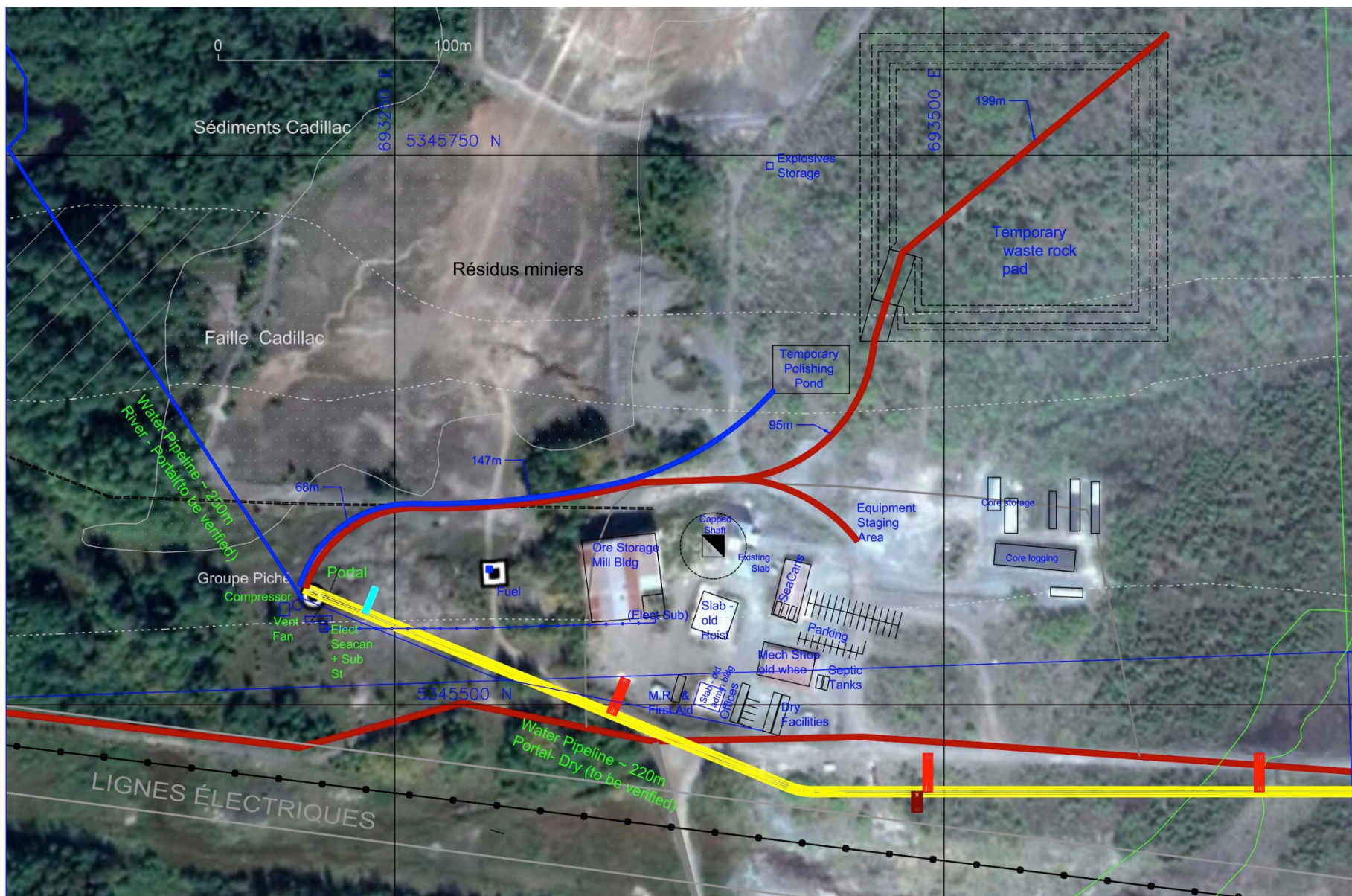
2018 Resources area

Plunge +10
Azimuth 008

	(m)	(m)	(m)	Au
OB-16-12	520,0	536,0	16,0	3,0
OB-16-15	444,0	450,0	6,0	5,0
OB-17-23	532,0	535,0	3,0	11,9
et	614,6	625,5	10,9	2,5
OB-17-25	417,0	510,0	93,0	1,0
OB-17-25W1	394,0	448,1	54,1	2,8
OB-17-26	460,0	507,0	47,0	1,2
OB-17-29	354,5	374,1	19,6	4,5
OB-18-84	399,0	411,2	12,2	8,7
OB-18-84	420,0	432,8	12,8	37,5



40,000 tons bulk sample



Why RDS?



Experienced management with 13% ownership

High-grade, low risk, low Capex project

Surrounded by Best-in-Class operators

Strong exposure to Gold

Excellent exploration potential highlighted in new 3D model

**2019 Catalysts: Expansion and exploration drilling results,
New model publication, Resource estimate update,
Permitting for underground exploration program, Project
financing**



Contact Info

Hubert Parent-Bouchard
Corporate development
819.763.9969
hpbouchard@radissonmining.com

Radisson mining resources Inc.
700 Dallaire ave, 2nd floor
Rouyn-Noranda. Qc J9X 4V9
www.radissonmining.com

A photograph of a rock specimen with prominent gold veins. The rock is dark grey and black, with bright yellow and orange gold veins and nuggets. A vertical gold-colored bar is overlaid on the right side of the image, containing the text "GOLD RUNS IN OUR VEINS".

**GOLD RUNS
IN OUR
VEINS**

16



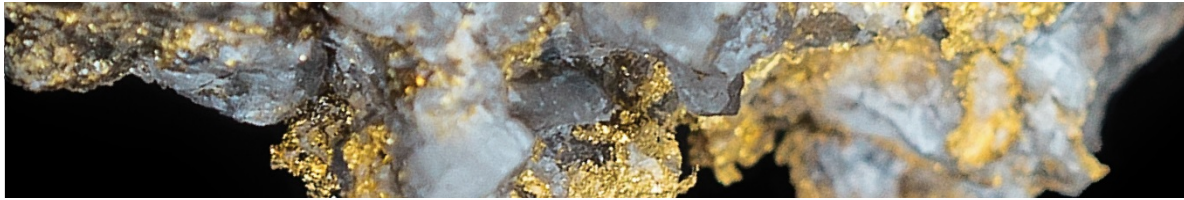
APPENDIX "A"

Board of directors

<p>DENIS LACHANCE, Eng. Chairman of the Board</p>	<ul style="list-style-type: none"> • President of Koniambo Nickel SAS > 7G\$ • Vice president operations at Xstrata Nickel (Raglan) • GM for Noranda Inc. • GM for TVX Gold Inc. (Casa Berardi) • GM for Agnico Eagle Mines (Joutel division and Goldex project).
<p>MARIO BOUCHARD President & CEO</p>	<ul style="list-style-type: none"> • 25 years in the Brokerage industry • President of Admirio Industriel inc. • CIM Rouyn-Noranda branch director for 26 years
<p>RÉJEAN GOURDE, Eng. Director</p>	<ul style="list-style-type: none"> • President & CEO of Reunion Gold • More than 40 years of experience in the industry • 12 years with Falconbridge and Ressources Aiguebelle • Senior VP of Guiana Shield division of Cambior
<p>JEAN DION Director</p>	<ul style="list-style-type: none"> • Visionary and one of the most influential entrepreneurs in Rouyn-Noranda • Founded the Dion group in the 90s (more than 350 employees now)
<p>TONY BRISSON Director</p>	<ul style="list-style-type: none"> • 26 years of experience in Geology • Exploration Manager for Goldcorp Inc. (Eleonore Mine) • VP of exploration Cogitore Resources Inc. • Chief Geologist for Cambior Inc.
<p>DENIS BOIS, P. Geo Director</p>	<ul style="list-style-type: none"> • Near 40 years of experience in the mining industry • URSTM director from 1989 to 2017 • Director on the Board of Fonds de solidarité FTQ A-T regional fund
<p>LUC SIMONEAU Director</p>	<ul style="list-style-type: none"> • President & founder of Micro ML inc. a computer and IT firm

Management

MARIO BOUCHARD President & CEO	<ul style="list-style-type: none">• See previous page
DENIS LACHANCE. P. Eng, Interim CFO	<ul style="list-style-type: none">• See previous page
RICHARD NIEMINEN. P. Geo, Exploration Manager, QP	<ul style="list-style-type: none">• Close to 30 years of experience in Geology• Former Chief geologist at BraceMac-McLeod Mine• Twice, he was a member of a geological team that received the AEMQ Prospector of the Year Award for the discovery of deposits in Quebec (West Ansil in 2005, and Bracemac-McLeod in 2007)
HUBERT P. BOUCHARD Corporate Development	<ul style="list-style-type: none">• Joined Radisson in 2014• Treasurer and Director of Rouyn-Noranda branch of CIM• 7 years in accounting for La Capitale assurances générales and a renowned mining contractor in the Abitibi area.



2018 O'Brien Project Mineral Resource Estimate at a 3.50 g/t Au cut-off, Sensitivity at other cut-off scenarios

Indicated					Inferred				
Area	Cut-off	Tonnage	Grade g/t Au	Ounces	Area	Cut-off	Tonnage	Grade g/t Au	Ounces
All Areas	2.50	1,800,104	5.14	297,466	All Areas	2.50	2,054,524	4.22	278,644
	3.00	1,409,734	5.81	263,108		3.00	1,519,190	4.74	231,612
	3.50	1,125,447	6.45	233,491		3.50	1,157,021	5.22	194,084
	4.00	910,885	7.09	207,696		4.00	830,615	5.80	154,833
	4.50	751,753	7.70	186,019		4.50	538,938	6.65	115,140
	5.00	624,734	8.30	166,671		5.00	486,200	8.52	133,245

1. Source 43-101 Technical report for the O'Brien project, Abitibi, Québec, InnovExplo, March 20, 2018

Resource expansion drilling

Main results from 2016-2018

Drill hole	Core length (m)	Grade
		Au
OB-16-1	1.7	3.4
OB 16-3	1.0	12.8
OB-16-3	2.0	3.2
OB-16-4	6.9	3.1
OB-16-5	1.0	5.0
OB-16-5	0.6	11.0
OB-16-5	1.3	17.6
OB-16-6	2.0	4.3
OB-16-7	3.0	16.2
OB-16-8	2.0	5.9
OB-16-09	2.0	4.0
OB-16-09	3.0	3.2
OB-16-10	2.0	8.6
OB-16-12	16.0	3.0
<i>Including</i>	5.0	5.0
OB-16-14	2.5	20.2
OB-16-14	3.0	6.3
OB-16-15	6.0	5.0
OB-16-15	1.5	4.9
OB-16-17	0.6	11.5
OB-16-19	3.8	5.8
OB-16-20	1.5	10.5
OB-16-20	4.0	4.3
OB-16-21	3.1	3.3
<i>Including</i>	1.1	6.4
<i>Including</i>	2.1	4.3

Drill hole	Core length (m)	Grade
		Au
OB-17-22	7.5	4.7
<i>Including</i>	3.0	10.3
OB-17-23	3.0	4.4
<i>Including</i>	3.0	11.9
<i>And</i>	1.4	13.9
OB-17-23W1	2.0	4.9
OB-17-24	9.0	3.2
<i>Including</i>	5.3	4.3
OB-17-25	93.0	1.0
	1.0	5.0
<i>Including</i>	2.0	8.5
	2.0	4.8
<i>And including</i>	7.0	3.7
<i>Which includes</i>	1.0	19.7
OB-17-25W1	54.1	2.8
<i>Including</i>	8.0	12.9
OB-17-26	1.4	3.7
	47.0	1.2
<i>Including</i>	9.0	2.1
	3.0	6.5
OB-17-29	19.6	4.5
<i>Including</i>	1.0	8.6
<i>And</i>	1.2	54.6
OB-17-30	24.3	1.5
<i>Including</i>	1.0	4.6
<i>and</i>	0.6	19.7

Drill hole	Core length (m)	Grade
		Au
OB-17-35	1.0	6.9
<i>and</i>	5.7	4.0
<i>Including</i>	1.0	20.6
OB-17-38	15.3	1.1
OB-17-40	1.0	5.2
OB-17-44	45.0	1.3
<i>Including</i>	1.0	17.8
<i>and</i>	3.0	3.3
<i>and</i>	3.0	8.1
OB-17-50	22.0	2.1
<i>Including</i>	6.1	6.2
<i>which includes</i>	3.1	9.1
OB-17-52	6.0	10.0
<i>Including</i>	2.0	23.6
OB-17-52	6.0	7.4
<i>Including</i>	0.5	78.9
OB-17-53	18.4	1.7
<i>Including</i>	0.5	23.1
<i>and</i>	1.0	4.2
OB-17-54	1.5	4.5
OB-17-54W1	1.0	4.0
OB-17-55	21.4	3.9
<i>Including</i>	7.1	6.9
OB-17-56	30.7	0.9
<i>Including</i>	1.3	4.6
OB-17-60	8.3	4.4