

Radisson
MINING RESOURCES

TSXV:RDS

**CREATING VALUE IN
A WORLD
RENOWNED GOLD
MINING CAMP**

**GOLD RUNS
IN OUR
VEINS**



Cautionary Statement

CAUTIONARY STATEMENT REGARDING FORWARD-LOOKING INFORMATION

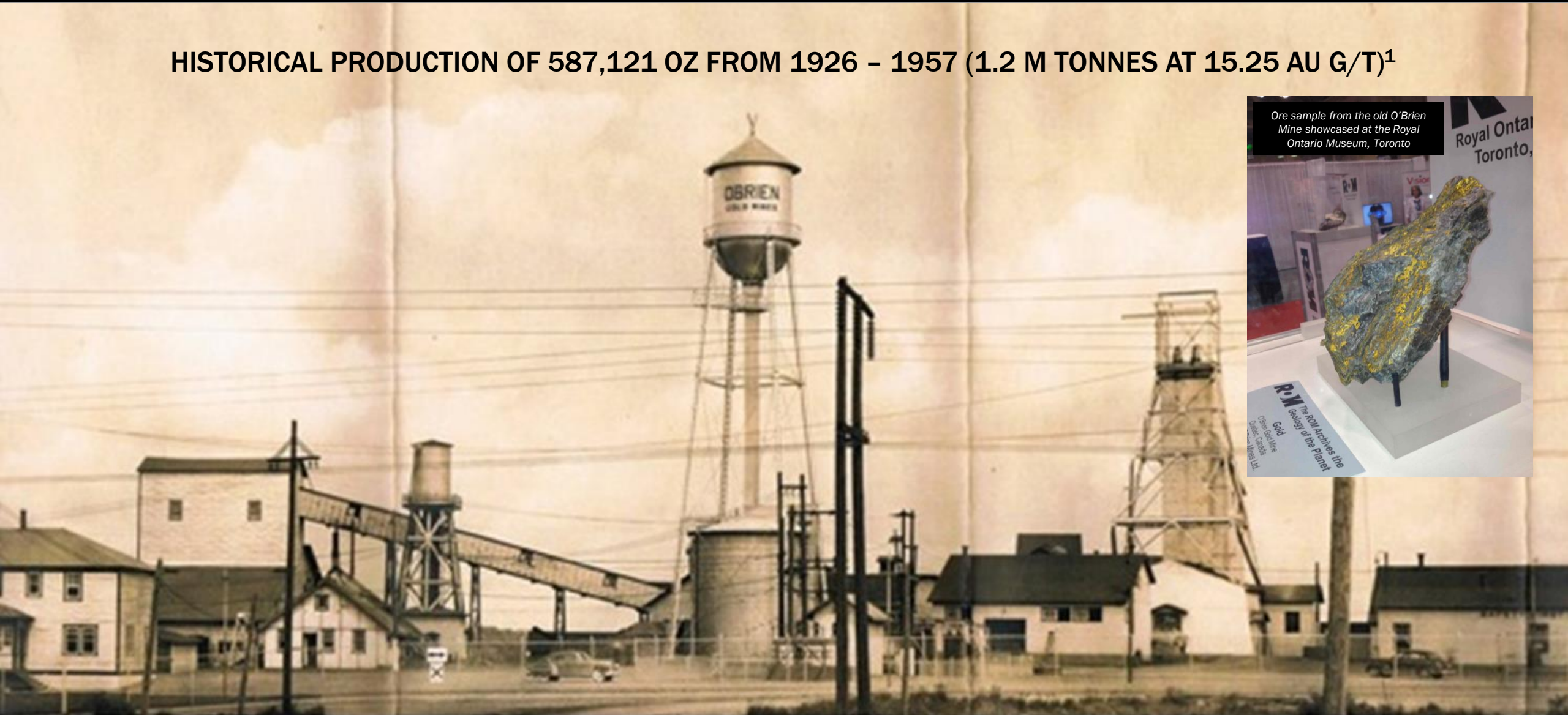
Except for historical information certain statements included in this presentation are forward-looking statements within the meaning of Canadian securities laws. Such statements may include words such as “Anticipates”, “schedule”, “projects”, “plans”, “targets”, “programs”, “continues”, “estimates”, “could”, “should”, “would” or “will”. Forward-looking statements made in this presentation involve significant risks and uncertainties. These risks and uncertainties include the inherent risks involved in the exploration and development of mineral properties. the uncertainties involved in interpreting drilling results and other geological data. fluctuating metal prices. the possibility of project cost overruns or unanticipated costs and expenses. uncertainties relating to the availability and costs of financing needed in the future. and other factors. The Corporation disclaims any intention or obligation to update forward-looking statements if circumstances or management’s estimates or opinions should change. The reader is cautioned not to place undue reliance on forward-looking statements.

All references to currency made in this presentation are in Canadian dollars unless otherwise stated.

Nicolas Guivarch, M. Sc., P.Geo., acts as a Qualified Person as defined in National Instrument 43-101 and has reviewed and approved the technical information in this presentation.

THE O'BRIEN MINE: RICHEST GOLD MINE BY GRADE IN QUEBEC

HISTORICAL PRODUCTION OF 587,121 OZ FROM 1926 – 1957 (1.2 M TONNES AT 15.25 AU G/T)¹



Why Radisson?

O'Brien is one of the highest-grade undeveloped gold projects in Canada/USA

- Indicated grade of 9.48 g/t is among the highest of undeveloped gold projects not owned by a producer.

Excellent location in one of the best mining camps in the world

- Bousquet-Cadillac Mining Camp - prolific gold camp in the Abitibi (Quebec) which has produced ~25 Moz in 100 years.
- High profile neighbors including Agnico-Eagle (LaRonde, LZ5 and Lapa), IAMGOLD (Westwood), Wesdome (Kiena) and Eldorado (Lamaque)
- Access to power, infrastructure, spare milling capacity, skilled labour and support services.

Exploration upside next to the old O'Brien Mine, historically the richest gold mine in Quebec

- Claims cover more than a 5 km strike length, including over 2.5 km to the east and west of the past producing O'Brien Mine, historically the highest-grade gold mine in Quebec
- Similar geology & structural setting as the old O'Brien mine on the property
- Majority of current resources within a 1 km strike (vs over 5x available strike) and within a vertical depth of 500 m (mines in the camp typically extend to well over 1 km).
- Robust litho-structural model and more than 75 years of historical production and exploration data to guide exploration efforts

Experienced team and strong balance sheet

- Team with the right combination of capital markets and technical experience.
- Cash position of \$11.0 M¹. Funded to complete >130,000 m of drilling through 2021 (including 60,000 m in 2019-20 and an additional 70,000 m in 2021)

Strong institutional and insider ownership

- More than 11% insider ownership and 35% institutional ownership
- 2.5% owned by Rob McEwen (Founder of Goldcorp); 3.2% owned by Marshall Precious Metals (managed by David Garofalo, former CEO of Goldcorp, former CEO of Hudbay)

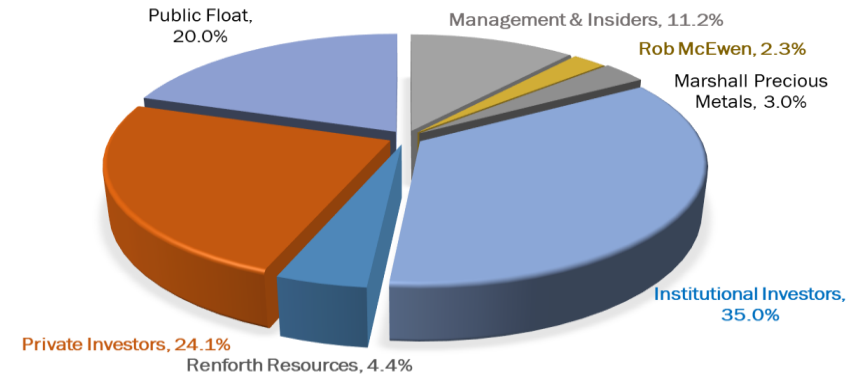
Company Overview

The O'Brien Gold Project

- High-grade, underground gold project in the Cadillac-Bousquet Mining Camp (Abitibi, Quebec)
- 5,800 ha land package including 5.2 km strike along the Cadillac Break
- Includes >2.5 km strike to the east and west of the past producing O'Brien Mine (historical production of 587 koz @ 15.25 g/t)
- MRE July 2019: 289 koz @ 9.48 g/t (Indicated), 145 koz @ 7.31 g/t (Inferred)
- New litho-structural model (Feb 2019)
- 130,000 m drill program underway (15,000 m remaining)

Share Price (C\$) ³	\$0.26
52 Week Range (C\$)	\$0.19 - \$0.35
Market Capitalization (C\$ M) ³	\$74.0
Shares Outstanding, Basic (\$ M) ¹	274.3
Options Outstanding (\$ M) ¹	14.9
Warrants Outstanding (\$ M) ¹	16.4
Shares Outstanding, FD (\$ M) ¹	305.6
Cash position (C\$ M) ⁴	\$11.0

Ownership Breakdown²



Top holders

#	Top Holders	Shares	%
1	1832 AM	25.8	9.4%
2	OCIM PM	16.2	5.9%
3	Michael Gentile (Strategic Advisor)	16.3	5.9%
4	Renforth Resources	12.0	4.4%
5	Jean Dion (Director)	9.3	3.4%
6	Marshall Precious Metals	8.2	3.0%
7	US Global	7.0	2.6%
8	Mario Bouchard (President & CEO)	7.2	2.6%
9	Rob McEwen	6.4	2.3%
10	Caisse de dépôt	6.1	2.2%
11	SIDEX	4.9	1.8%
12	Denis Lachance (Chairman)	4.2	1.5%

Experienced Leadership

BOARD OF DIRECTORS

DENIS LACHANCE Eng.
Chairman of the board

35+ years mining experience | Sr positions with Koniambo Nickel, Xstrata (Raglan), Noranda, TVX (Casa Berardi), Agnico Eagle (Goldex).

MARIO BOUCHARD
Director, Advisor

25+ years in the Brokerage industry | CIM Rouyn-Noranda branch director for 26 years | President of Admirio Industriel inc.

RÉJEAN GOURDE, Eng.
Director

40+ years mining industry experience | President & CEO of Reunion Gold | Senior positions with Falconbridge and Cambior

DENIS BOIS
Director

40+ years of mining experience | URSTM Director (1989 to 2017) | Director, Board of Fonds de solidarité FTQ A-T

MICHAEL GENTILE, CFA
Director, Strategic Advisor

15 years capital markets experience | PM with Formula Growth | Founder of the successful FG Alpha Fund | 20+ years as an active/successful mining investor

PIERRE BEAUDOIN
Director

30+ years of mining experience | COO of SilverCrest Metals Inc. | Sr. VP of Capital Projects (2010-2013) & COO (2013-2017) of Detour Gold

JEFF SWINOGA, CPA, MBA
Director

25+ years of mining industry experience | President, CEO & Director of Exploits Discovery Corp. | Previously National Mining and Metals Co-Leader at Ernst & Young Canada | Director, PDAC

MANAGEMENT TEAM

RAHUL PAUL
President and CEO

15 years capital markets /mining industry experience | Previously Director & Precious Metals Analyst at Canaccord Genuity

HUBERT PARENT-BOUCHARD
Chief Financial Officer

12 years accounting/finance/mining experience | Treasurer & Director, CIM Rouyn-Noranda branch

SYLVAIN DOIRE
Environment and Sustainable Development Manager

25 years of experience, 10 years at the Ministry of Environment, Quebec | Former Environment Coordinator for Agnico Eagle (Meadowbank and Méliadine), Falco Resources

NICOLAS GUIVARCH, M.Sc., P.Geo
Manager – Exploration and technical services

10 years of mining/exploration experience | Integral part of the exploration team since August 2019

ADVISORS

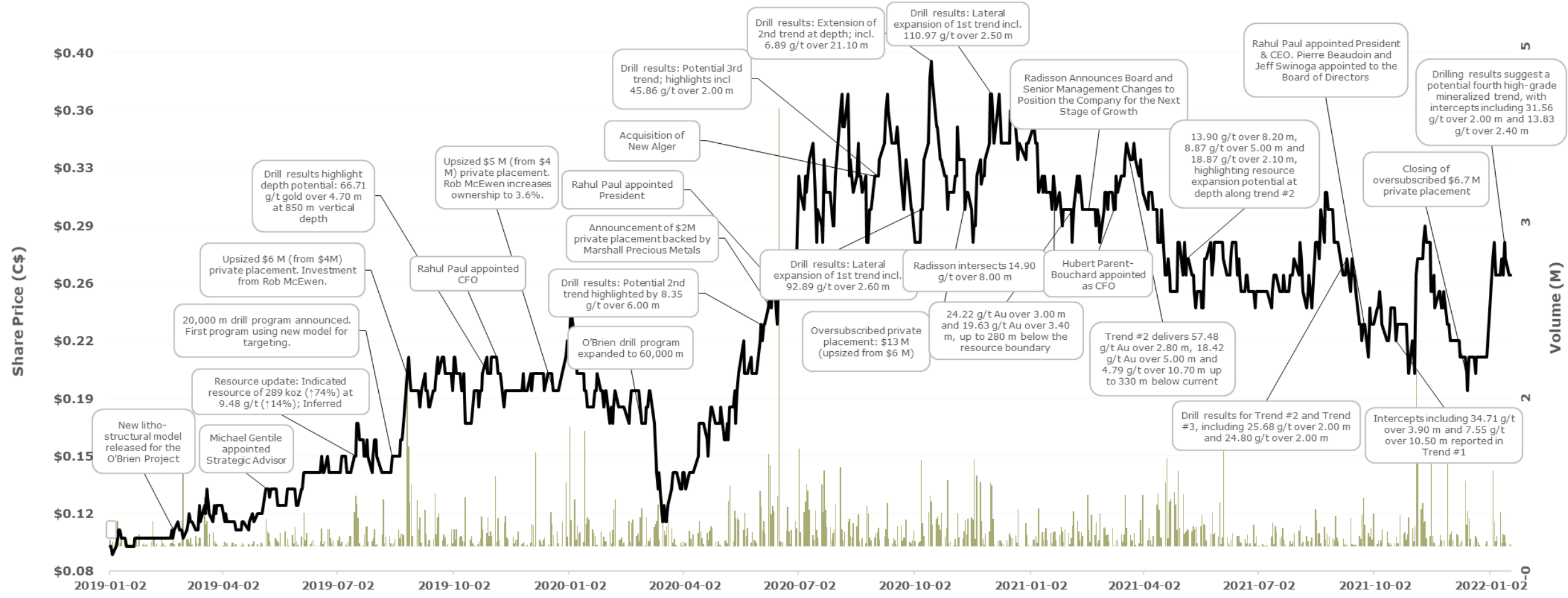
KENNETH WILLIAMSON, M.Sc. P.Geo
Senior Advisor, Geology

20 years of mining/exploration experience | Formerly with Premier Gold, Rubicon Minerals, Goldcorp | Developed the current litho-structural model and the ensuing NI 43-101 mineral resource estimate in 2019 at O'Brien

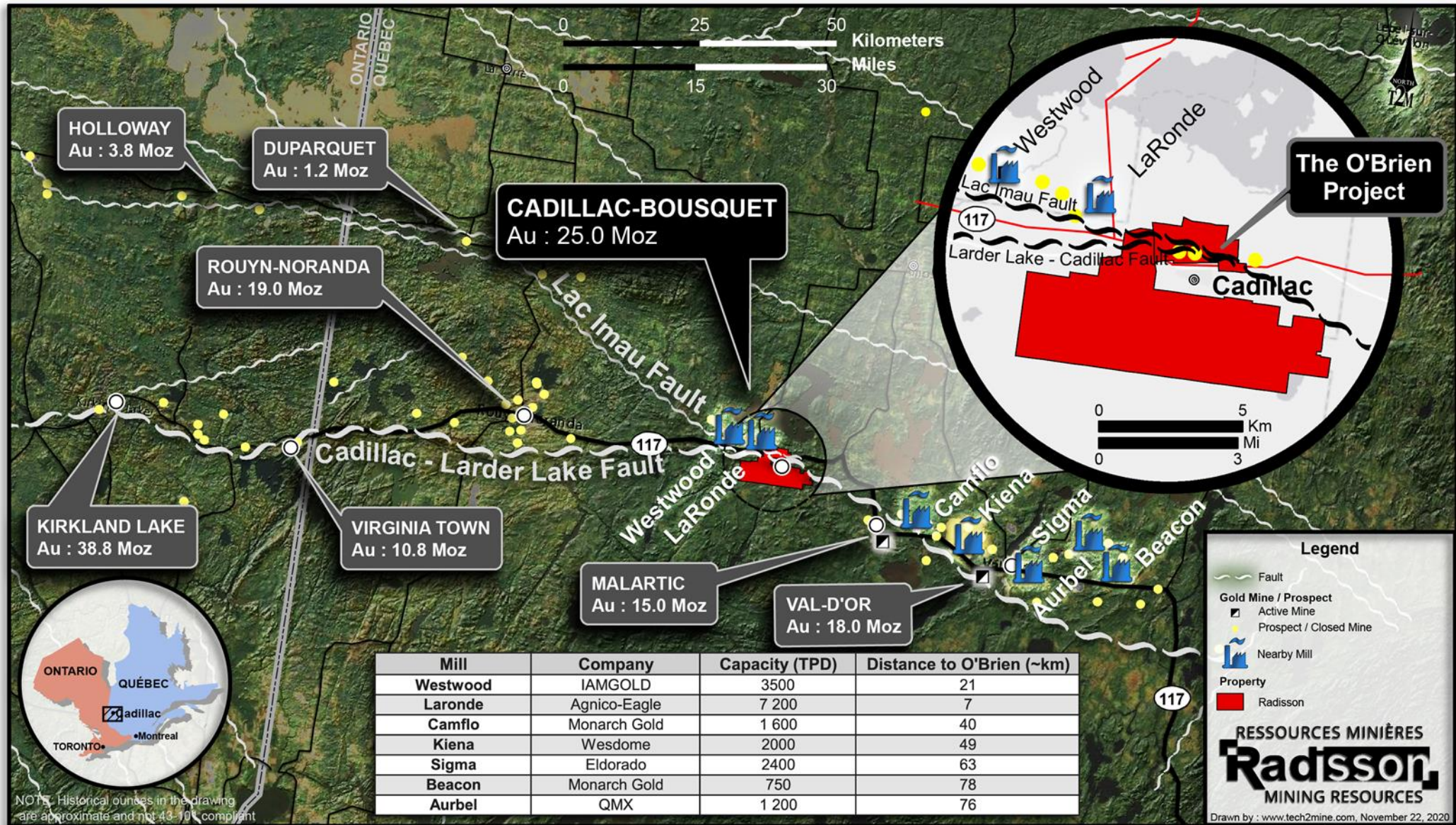
DONALD TRUDEL, P. Geo
Advisor, Exploration and Geology

More than 30 years of mining / exploration experience | Formerly with lamGold, Semafo, Richmond Goldcorp | Joined Radisson in February 2021

Building on momentum

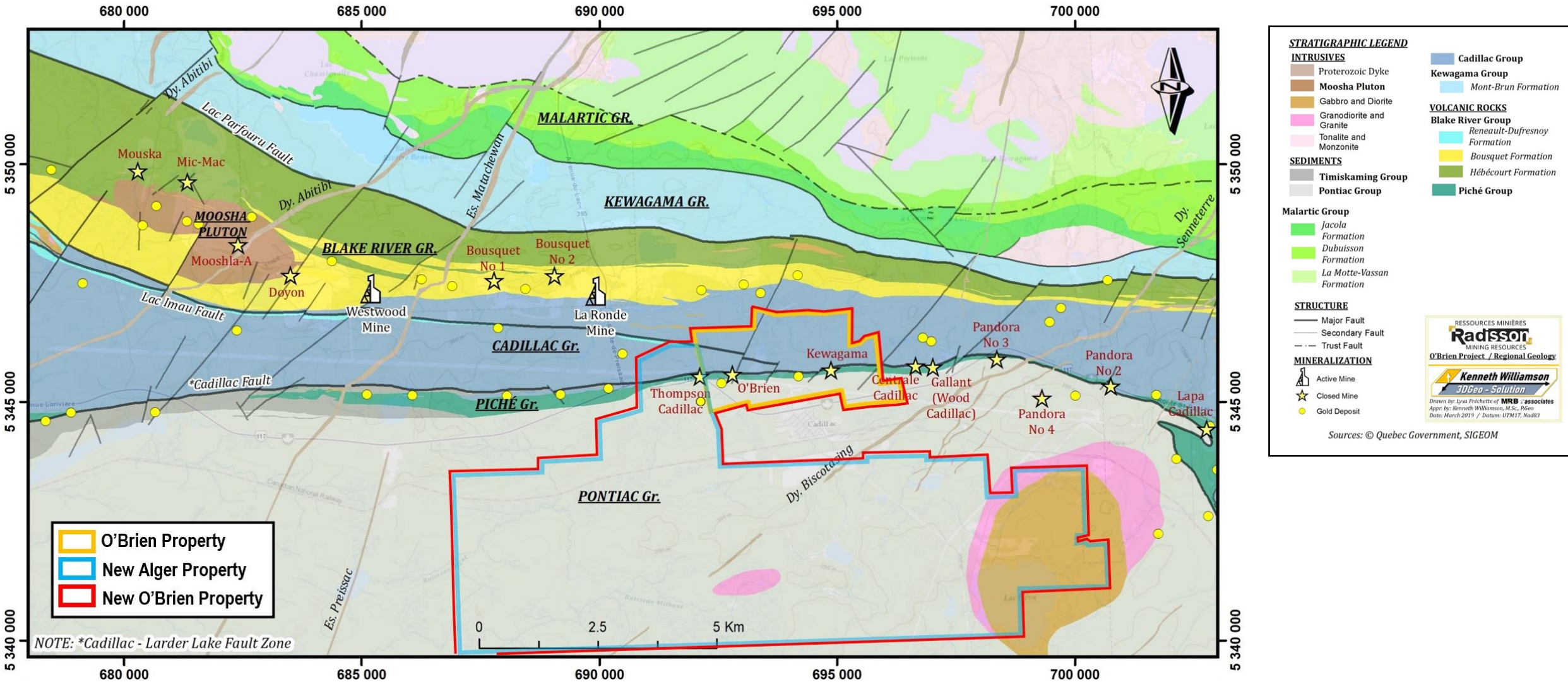


Established mining camp in a world renowned gold belt



Cadillac Mining Camp Geological Map

O'Brien Project – Land position expanded 9x following New Alger acquisition



RESSOURCES MINÉRIÈRES
Radisson
MINING RESOURCES
O'Brien Project / Regional Geology

Kenneth Williamson
3DGeo - Solution

Drawn by: Lyssa Fréchette of MRB - associates
Appr. by: Kenneth Williamson, M.Sc., P.Geo.
Date: March 2019 / Datum: UTM17, No48S

Sources: © Quebec Government, SIGEOM

Robust O'Brien resource even at a higher cut-off grade

Significant increase in O'Brien mineral resource estimate (July 2019)¹ driven by new litho-structural interpretation

	Cut-off (g/t Au)	Indicated resources			Inferred resources		
		Tonnage (t)	Grade (g/t Au)	Ounces (oz)	Tonnage (t)	Grade (g/t Au)	Ounces (oz)
July 2019 ¹	5.00	950	9.48	289	617	7.31	145
March 2018 ²	5.00	625	8.30	167	416	7.21	96
Variance		↑52%	↑14%	↑74%	↑48%	↑1%	↑52%

O'Brien Project Mineral Resource Estimate (July 2019) Sensitivity to Cut-off

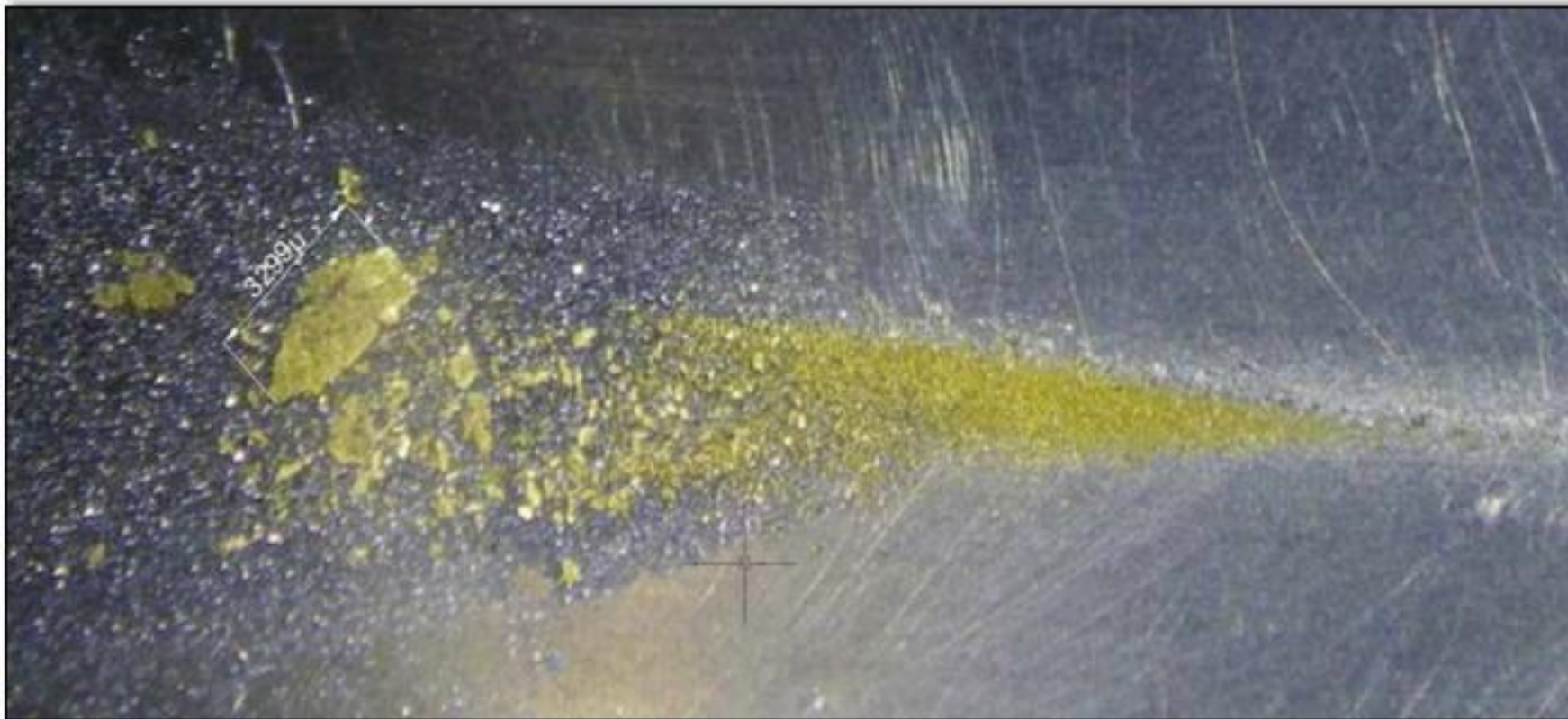
Cut-off (g/t Au)	Indicated resources			Inferred resources		
	Tonnage (kt)	Grade (g/t Au)	Ounces (koz)	Tonnage (kt)	Grade (g/t Au)	Ounces (koz)
7.00	545	12.16	213	244	9.69	76
6.00	712	10.82	248	375	8.54	103
5.00	950	9.48	289	617	7.31	145
4.00	1,350	7.99	347	975	6.27	197
3.50	1,600	7.32	377	1,208	5.78	225
3.00	1,906	6.67	409	1,500	5.29	255

1. NI 43-101 Technical report for the O'Brien project, Abitibi, Québec, 3D Geo-solution, July 15, 2019

2. NI 43-101 Technical report for the O'Brien project, Abitibi, Québec, InnovExplo, March 20, 2018

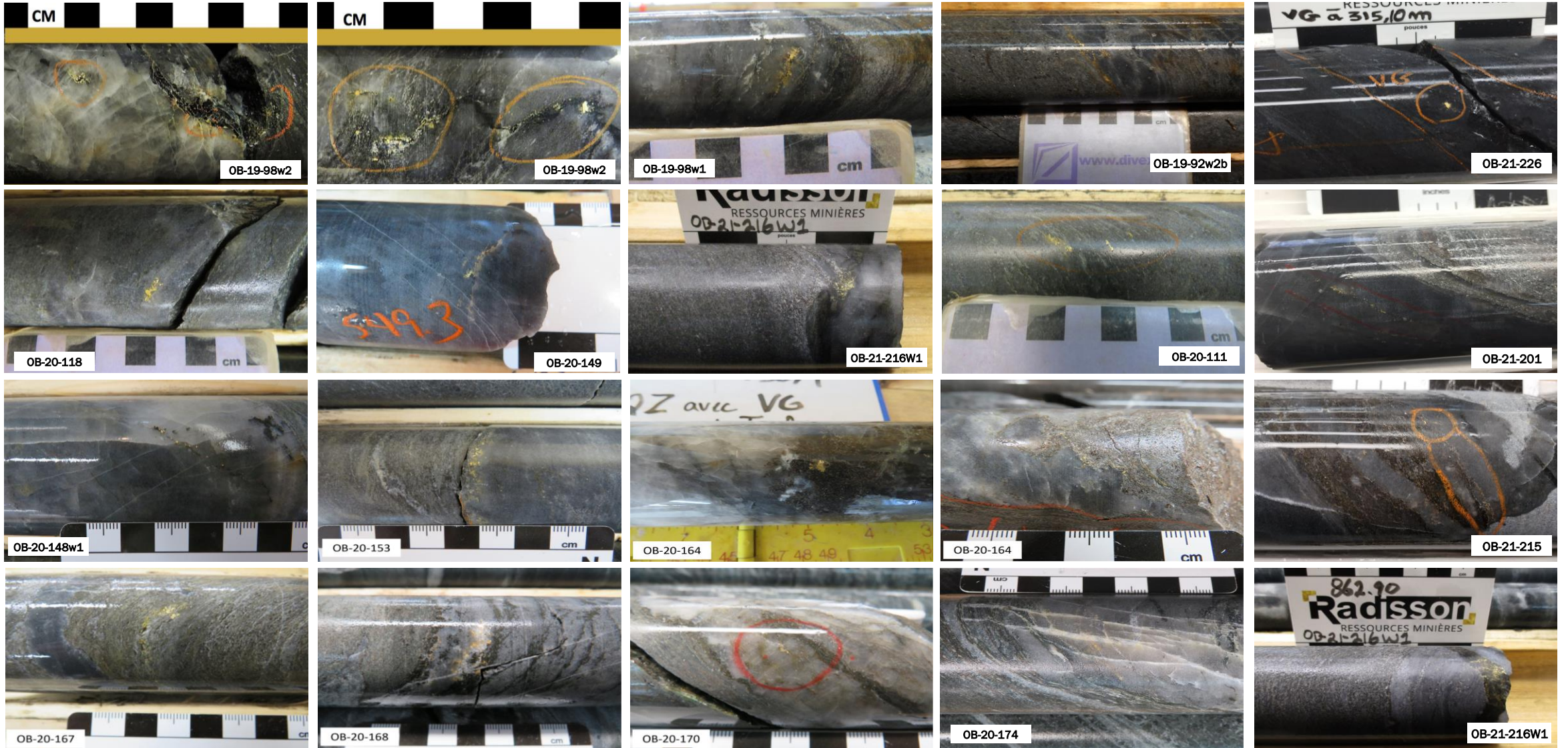
Preliminary metallurgical test work: Potential upside to grade?

- 11.13 g/t Au average grade obtained^{1,2}
 - 53.3% above sample grade
- 59.2% recovery by gravity concentration²
- Total recovery of up to 94%²

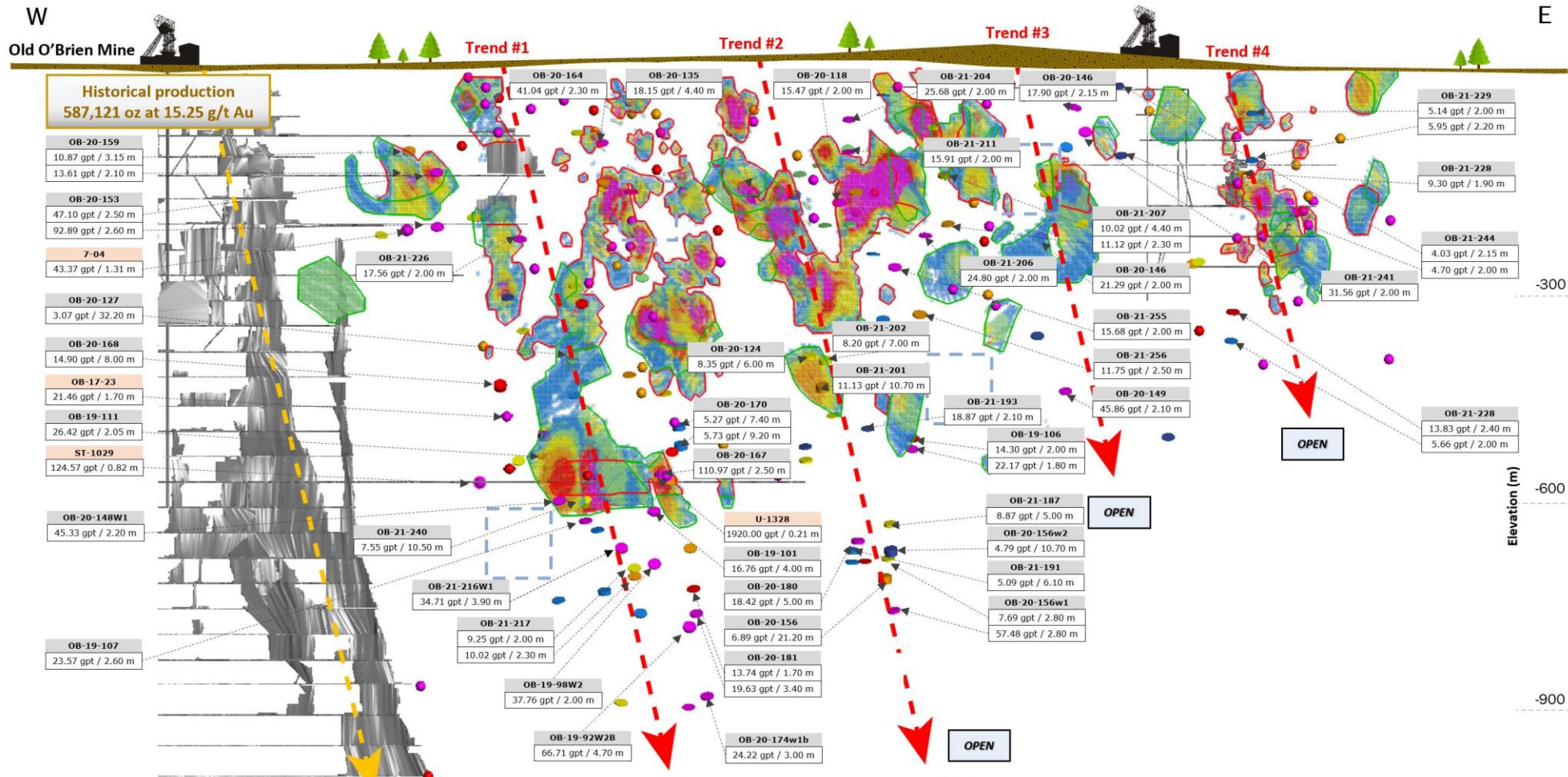


1. Sample tested totalled 61 kg and graded 7.26 g/t Au. It consisted of composite core lengths from the main structures of 36E area.
2. See press release of August 26, 2014

O'Brien drill core with visible gold showings



Well funded for the largest drill campaign in the history of the company (~130,000 m)



Historical production
587,121 oz at 15.25 g/t Au

- OB-20-159**
10.87 gpt / 3.15 m
13.61 gpt / 2.10 m
- OB-20-153**
47.10 gpt / 2.50 m
92.89 gpt / 2.60 m
- 7-04**
43.37 gpt / 1.31 m
- OB-20-127**
3.07 gpt / 32.20 m
- OB-20-168**
14.90 gpt / 8.00 m
- OB-17-23**
21.46 gpt / 1.70 m
- OB-19-111**
26.42 gpt / 2.05 m
- ST-1029**
124.57 gpt / 0.82 m
- OB-20-148W1**
45.33 gpt / 2.20 m
- OB-19-107**
23.57 gpt / 2.60 m

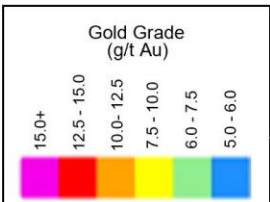
- OB-20-164**
41.04 gpt / 2.30 m
- OB-20-135**
18.15 gpt / 4.40 m
- OB-20-118**
15.47 gpt / 2.00 m
- OB-21-204**
25.68 gpt / 2.00 m
- OB-20-146**
17.90 gpt / 2.15 m
- OB-21-211**
15.91 gpt / 2.00 m
- OB-21-207**
10.02 gpt / 4.40 m
11.12 gpt / 2.30 m
- OB-21-206**
24.80 gpt / 2.00 m
- OB-20-146**
21.29 gpt / 2.00 m
- OB-21-241**
31.56 gpt / 2.00 m
- OB-21-229**
5.14 gpt / 2.00 m
5.95 gpt / 2.20 m
- OB-21-228**
9.30 gpt / 1.90 m
- OB-21-244**
4.03 gpt / 2.15 m
4.70 gpt / 2.00 m
- OB-21-255**
15.68 gpt / 2.00 m
- OB-21-256**
11.75 gpt / 2.50 m
- OB-20-149**
45.86 gpt / 2.10 m
- OB-21-228**
13.83 gpt / 2.40 m
5.66 gpt / 2.00 m
- OB-21-202**
8.20 gpt / 7.00 m
- OB-21-201**
11.13 gpt / 10.70 m
- OB-21-193**
18.87 gpt / 2.10 m
- OB-19-106**
14.30 gpt / 2.00 m
22.17 gpt / 1.80 m
- OB-21-187**
8.87 gpt / 5.00 m
- OB-20-156w2**
4.79 gpt / 10.70 m
- OB-21-191**
5.09 gpt / 6.10 m
- OB-20-156w1**
7.69 gpt / 2.80 m
57.48 gpt / 2.80 m
- OB-20-170**
5.27 gpt / 7.40 m
5.73 gpt / 9.20 m
- OB-20-167**
110.97 gpt / 2.50 m
- OB-21-240**
7.55 gpt / 10.50 m
- OB-21-216W1**
34.71 gpt / 3.90 m
- OB-21-217**
9.25 gpt / 2.00 m
10.02 gpt / 2.30 m
- OB-19-98W2**
37.76 gpt / 2.00 m
- OB-19-92W2B**
66.71 gpt / 4.70 m
- OB-20-174w1b**
24.22 gpt / 3.00 m
- U-1328**
1920.00 gpt / 0.21 m
- OB-19-101**
16.76 gpt / 4.00 m
- OB-20-180**
18.42 gpt / 5.00 m
- OB-20-156**
6.89 gpt / 21.20 m
- OB-20-181**
13.74 gpt / 1.70 m
19.63 gpt / 3.40 m

Significant Results	
OB-xx-xxx gpt Au / m	Current release
OB-xx-xxx gpt Au / m	Previously released
OB-xx-xxx gpt Au / m	Historical intercepts

O'Brien Gold Project: Longitudinal Section Looking North
Resource Block Model @ 5.0 g/t cut-off;



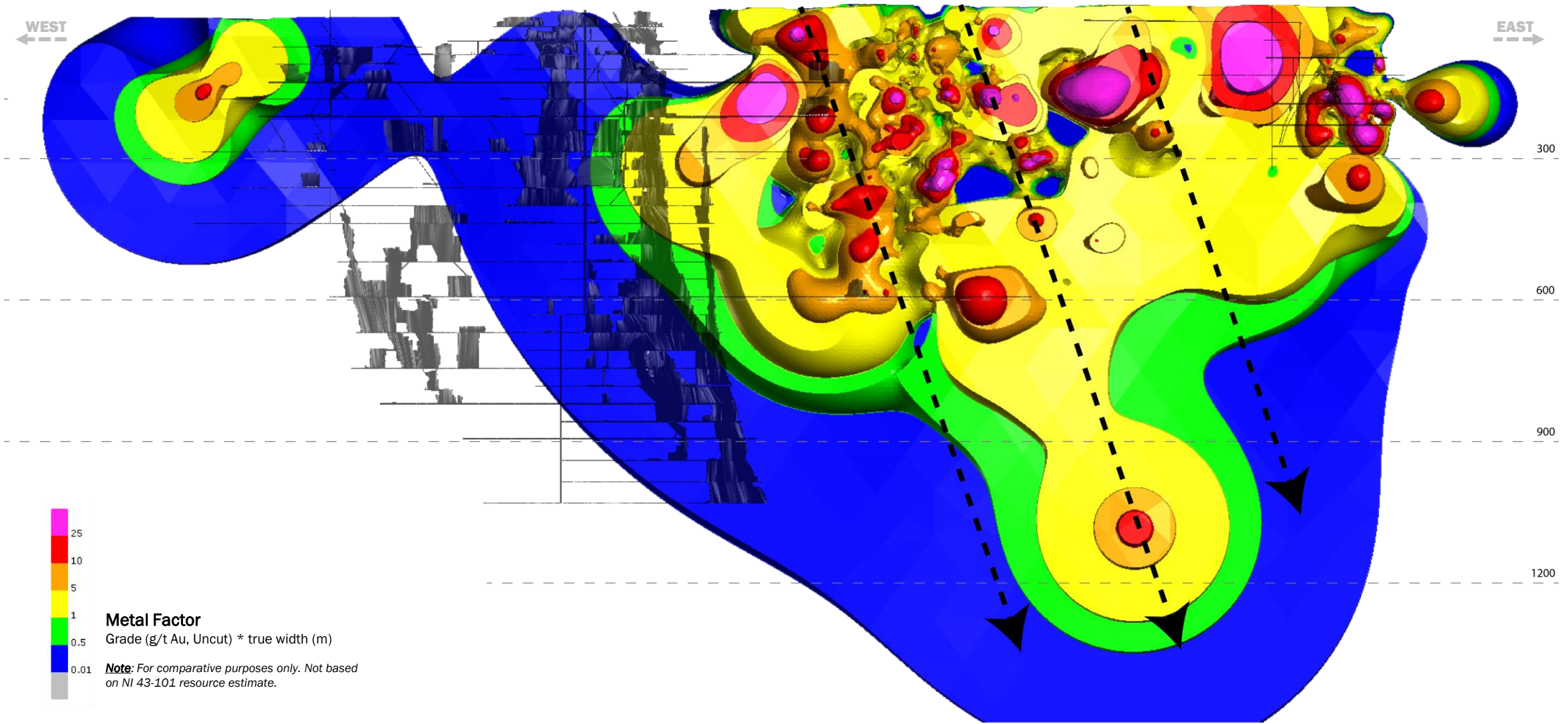
- Underground Development
- Indicated Resource outline
- Inferred Resource outline
- Trend historically mined
- Mineralized trend
- Drilling in progress



O'Brien Project: Gold Metal Factor (Grade * True Width)



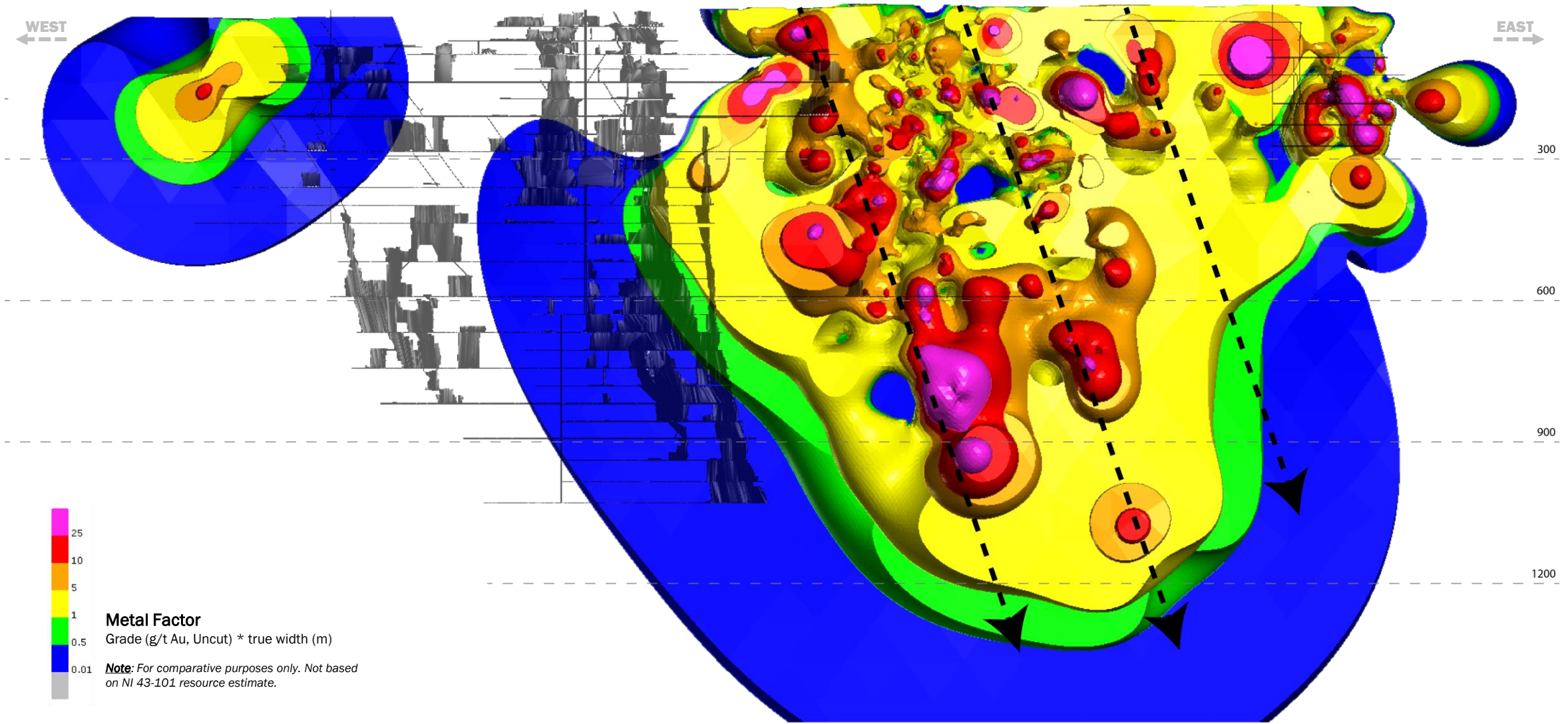
July 2019



0 125 250 375 500

O'Brien Project: Gold Metal Factor (Grade * True Width)

October 2021



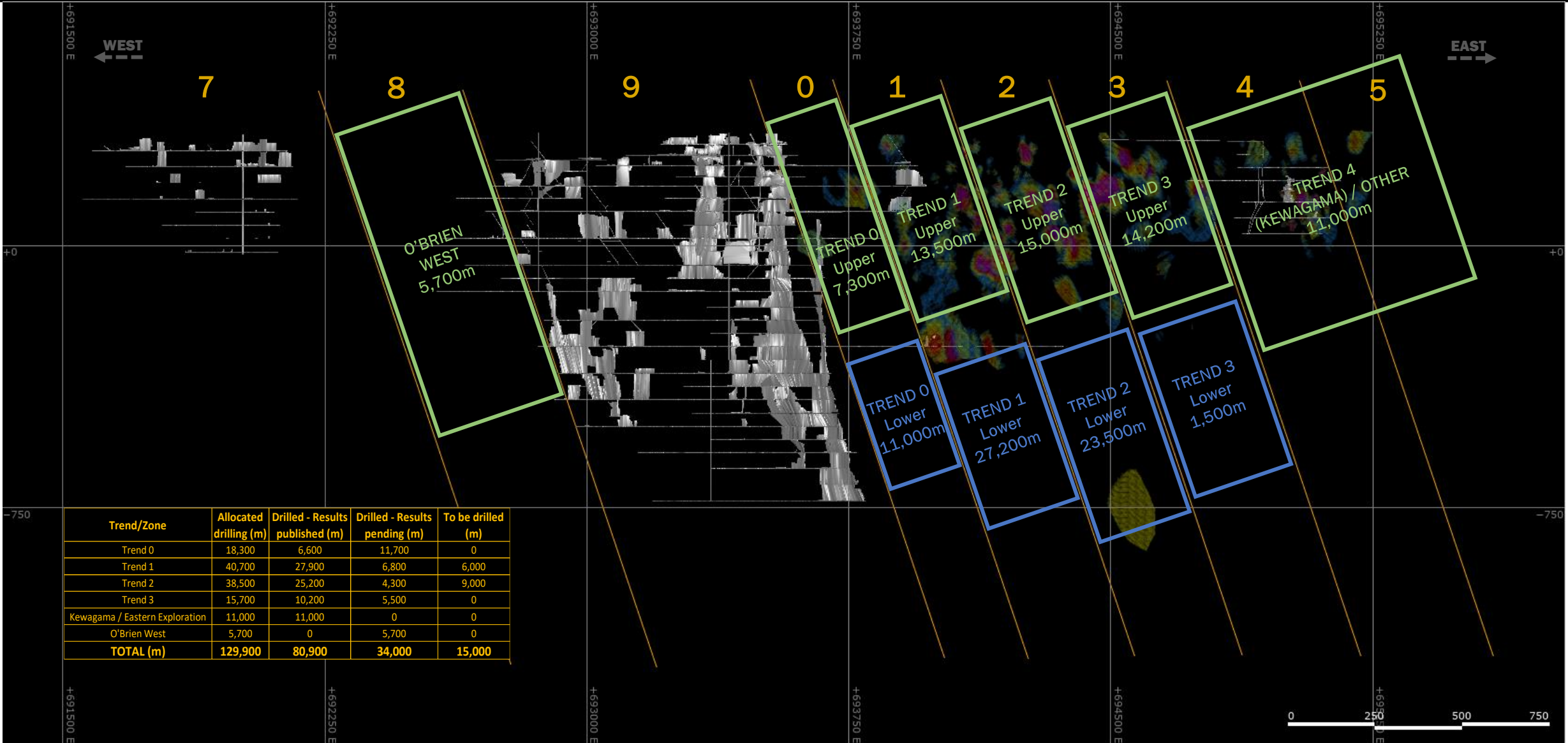
Metal Factor
Grade (g/t Au, Uncut) * true width (m)

25
10
5
1
0.5
0.01

Note: For comparative purposes only. Not based on NI 43-101 resource estimate.



Exploration: ~130,000 m drill program underway

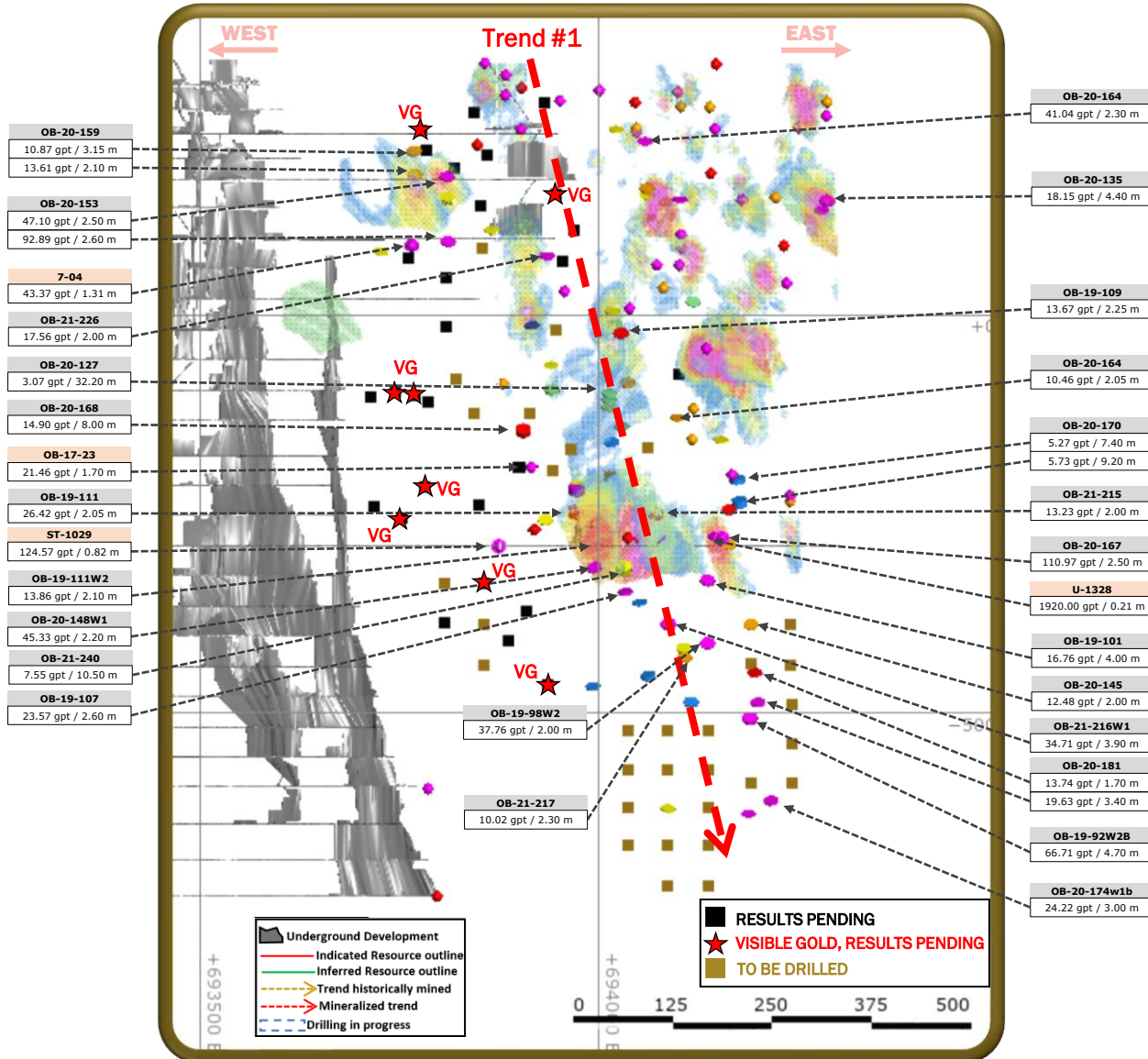


Trend 0, 1: 60,500 m of drilling planned

Mineralized Trends 0, 1

	Allocated drilling (m)	Drilled - Results published (m)	Drilled - Results pending (m)	To be drilled (m)
Trend 0	18,300	6,600	11,700	0
Trend 1	40,700	27,900	6,800	6,000
Total	59,000	34,500	18,500	6,000

- ❑ Trend 0 (Previously referred to as “Gap” Zone): Planned drilling to a depth of 800 m
 - Current resources mostly within 400 m from surface
 - Drilling to date has traced mineralization down to 800 m vertical depth
- ❑ Trend 1: Planned drilling to a depth of 1,100 m
 - Current resources mostly within 600 m from surface
 - Drilling to date has traced mineralization down to 950 m vertical depth

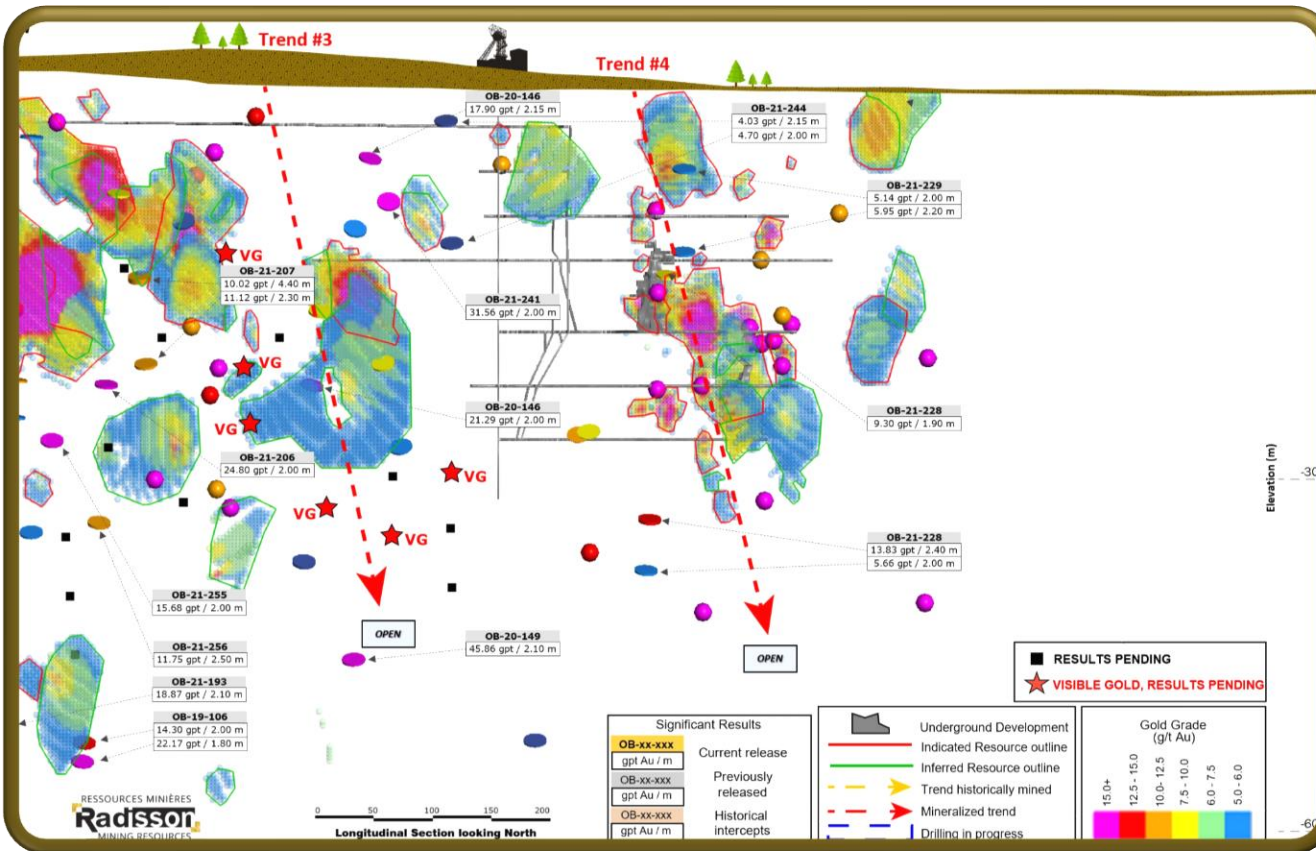


Trend 2, 3, 4 & Eastern exploration: 64,000 m of drilling planned

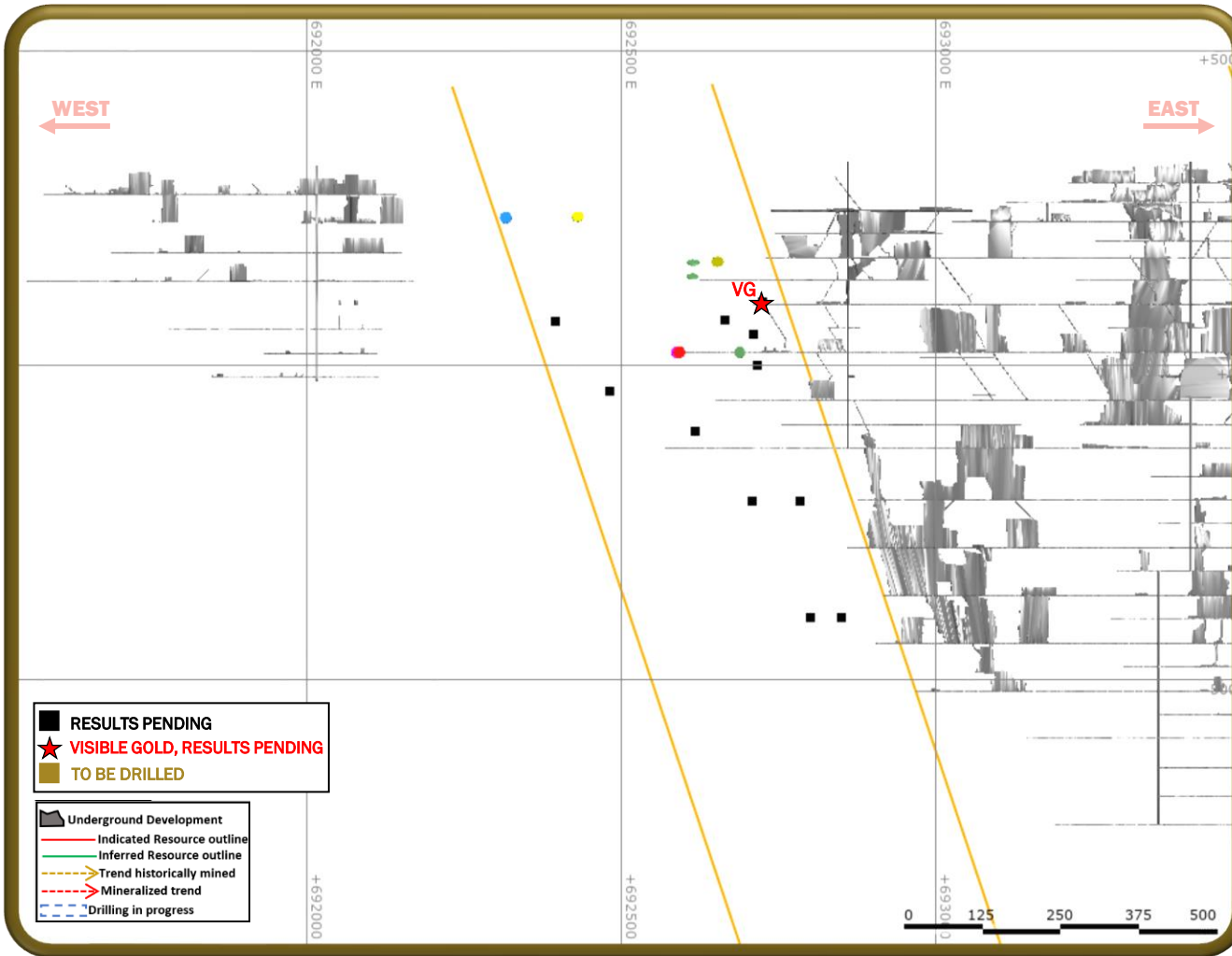
Mineralized Trends 2, 3, 4 & Eastern exploration

	Allocated drilling (m)	Drilled - Results published (m)	Drilled - Results pending (m)	To be drilled (m)
Trend 2	38,500	25,200	4,300	9,000
Trend 3	15,700	10,200	5,500	0
Trend 4 (Kewagama)	6,500	6,500	0	0
Kewagama East & Other	4,500	4,500	0	0
Total	65,200	46,400	9,800	9,000

- Trend 2: Planned drilling to a depth of 900 m
 - Current resources mostly within 400 m from surface
 - Drilling to date has traced mineralization down to 800 m vertical depth
- Trend 3: Planned drilling to a depth of 550 m
 - Current resources mostly within 350 m from surface
 - Drilling to date has traced mineralization down to 550 m vertical depth
- Trend 4: Drilling has traced mineralization down to 330 m
- East of trend 4: Approx 750 m of strike largely untested; future drilling to test for additional mineralized trends to the east of trend 4



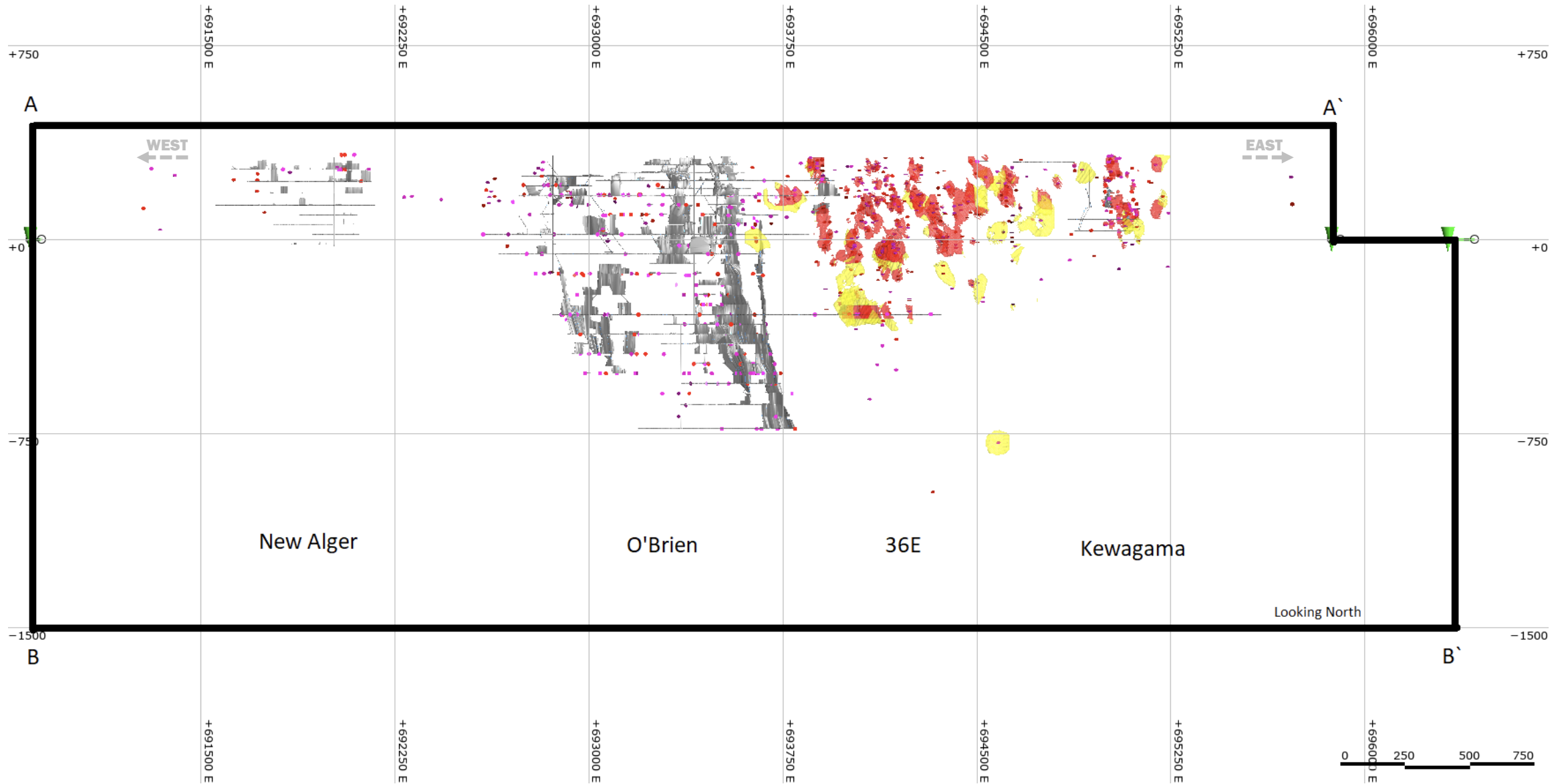
O'Brien West: 5,700 m of drilling planned



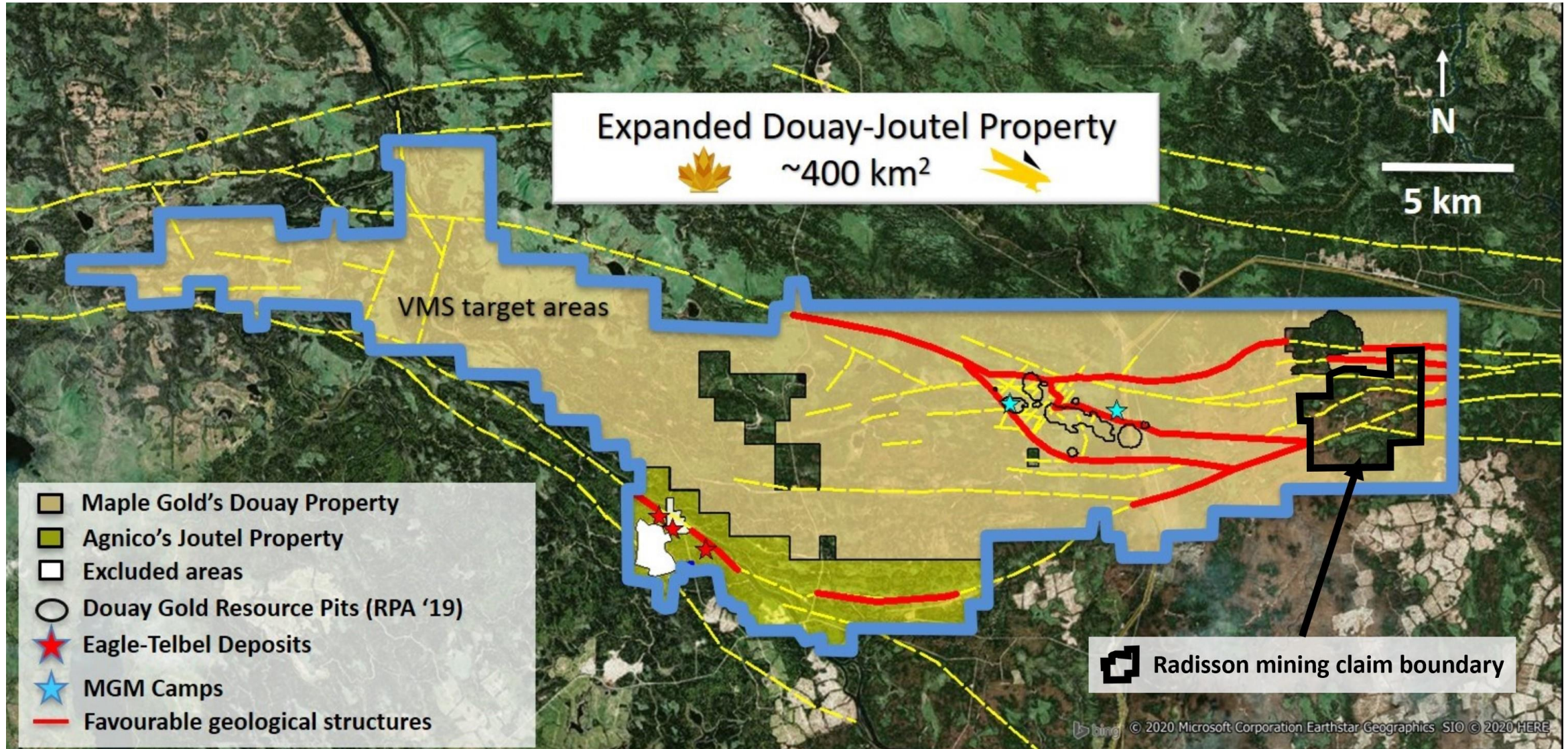
O'Brien West

- 5,700 m of exploration drilling has been completed to the west of the O'Brien Mine; Results pending
 - No currently defined NI 43-101 resources in the area
 - Drilling conducted to a depth of 750 m

>5.2km of Strike Length - Blue Sky



Douay Project: Radisson's claims relative to Agnico-Eagle – Maple Gold JV¹





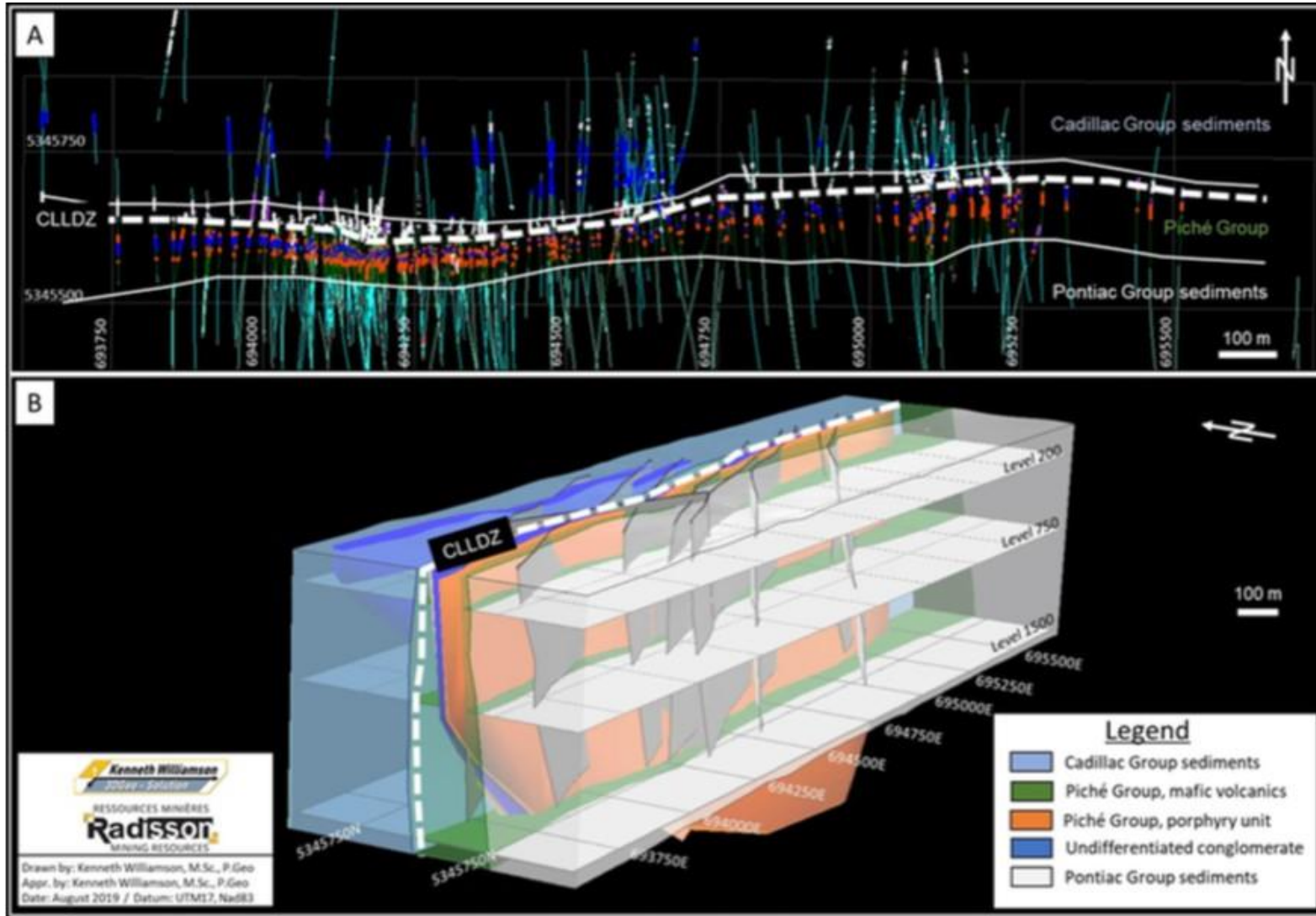
Contact Information

Investor relations
+1.819.763.9969
ir@radissonmining.com

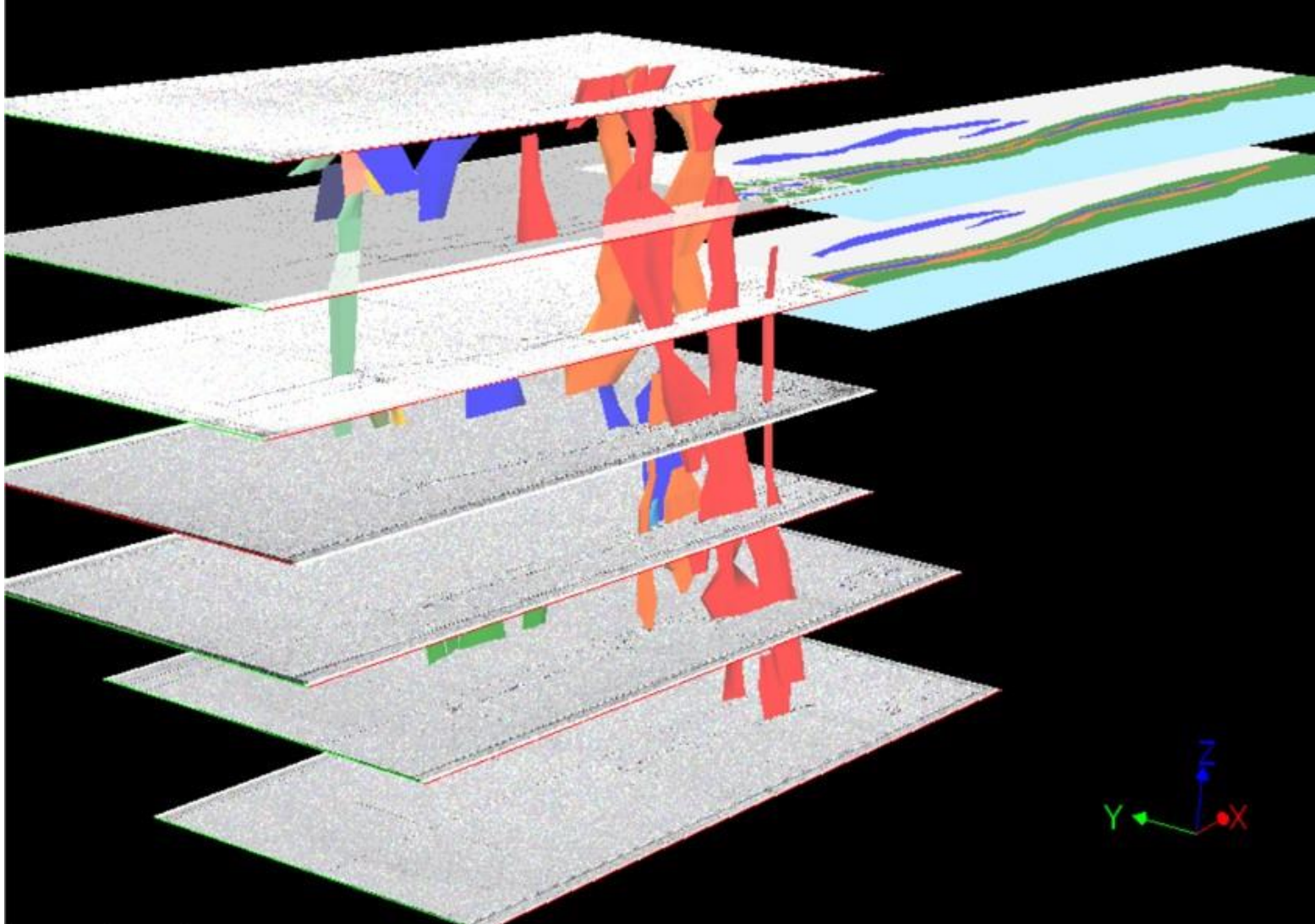
Radisson Mining Resources Inc.
700 Dallaire Ave, 2nd Floor
Rouyn-Noranda, Qc J9X 4V9
www.radissonmining.com



Appendix: 2019 Lithostructural Model



Appendix: 2019 Litho-structural Model – Validated by data from the old O’Brien Mine



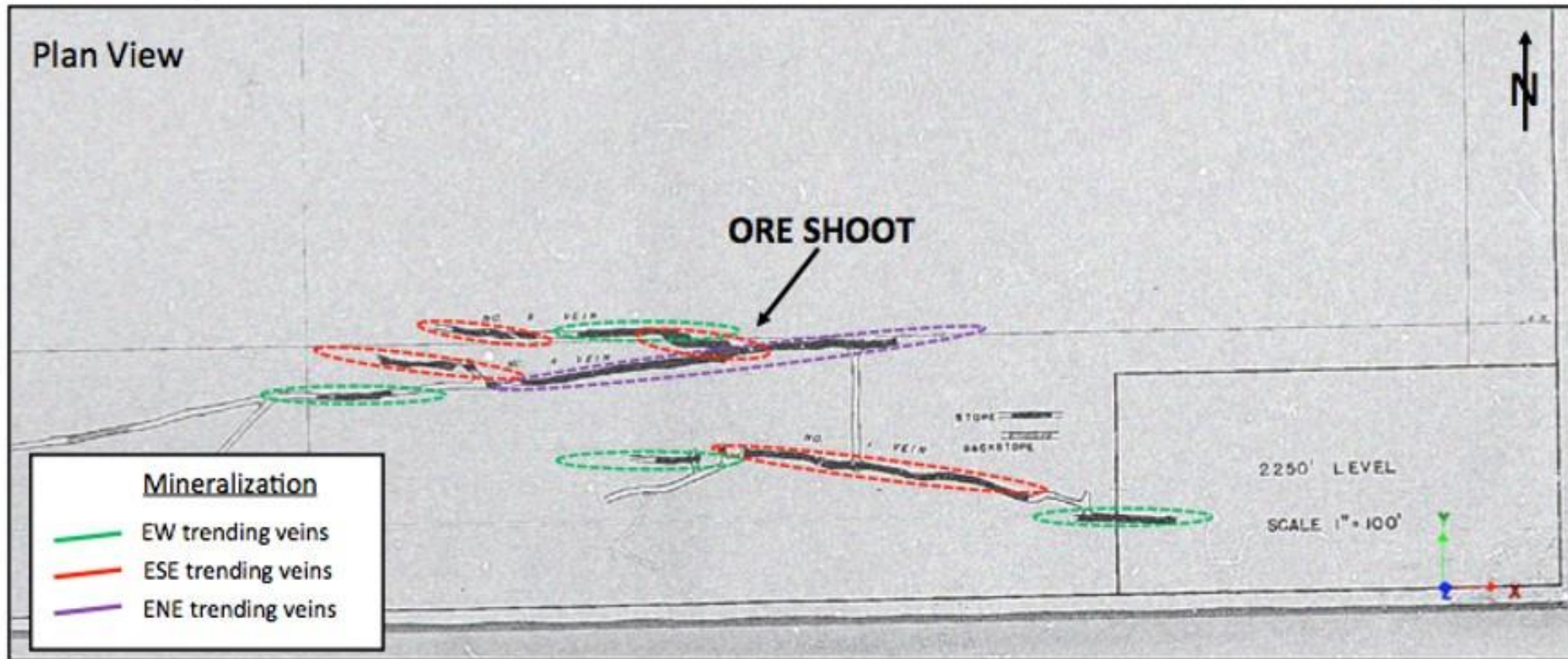
O'Brien Mine: 3D Isometric view

- Mined 587 koz @ 15.25 g/t (1926 – 1957)
- Mined to a depth of ~1,100 m
- ~90% of production came from only 3 veins

Source: NI 43-101 Technical report for the O'Brien project, Abitibi, Québec, 3D Geo-solution, July 15, 2019

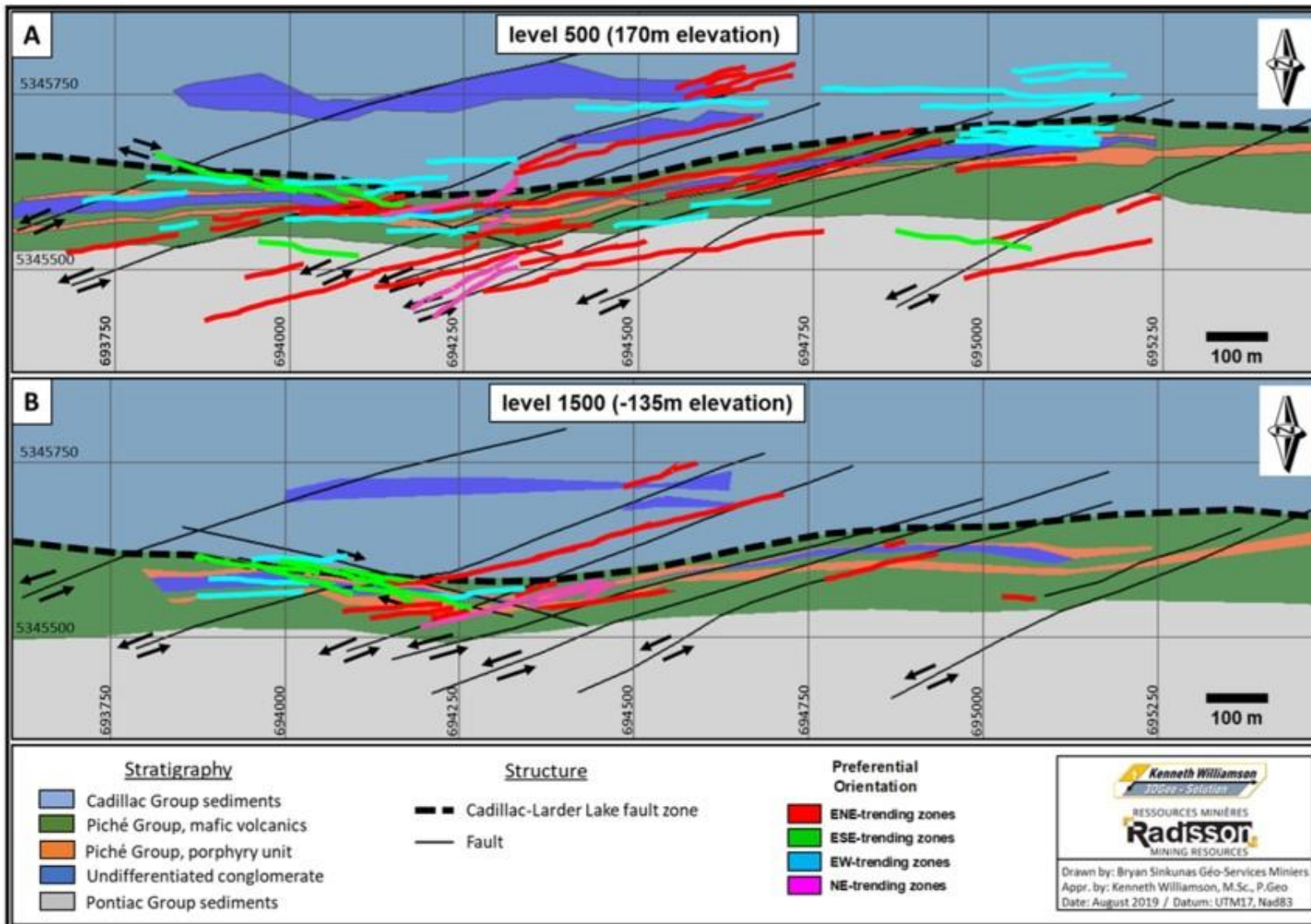
Appendix: 2019 Litho-structural model – Strong compatibility with structures mined at O’Brien

Old O’Brien level 2250 CLOSE-UP – Initial Interpretation



Level plans based on old production data show a strong compatibility between the new model and the geometry of structures previously mined at the O’Brien mine.

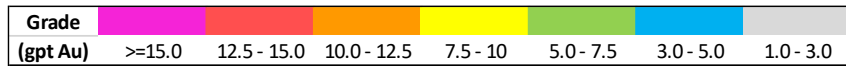
Appendix: 2019 litho-structural model - Plan view at different elevations



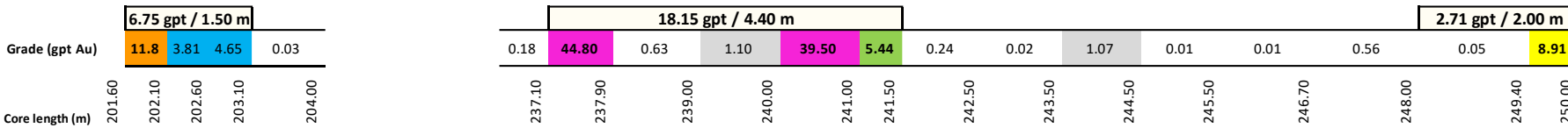
New model provides an opportunity to better target high-grade zones

- ~63 veins have been modeled, the majority of which have yet to be fully drill tested
- Data suggests very good continuity of mineralization to depth, but there has been limited drilling below 550 m
- Opportunity to better target high-grade zones due to improved structural understanding

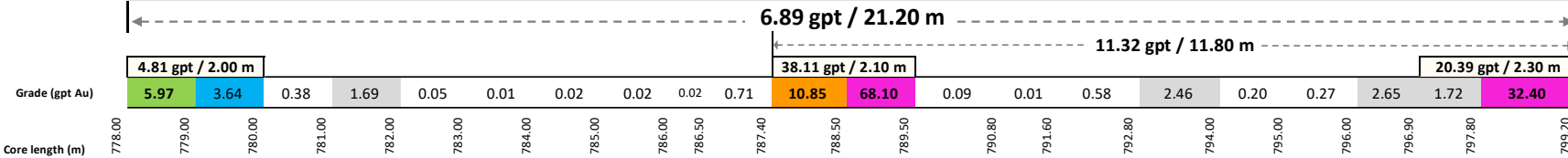
Au Grade distribution – Select drill holes (contd...)



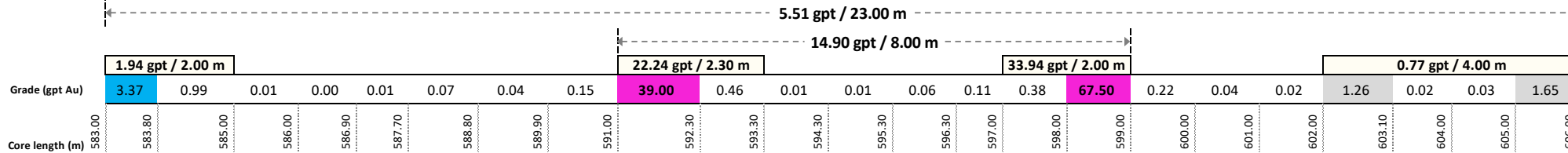
OB-20-135



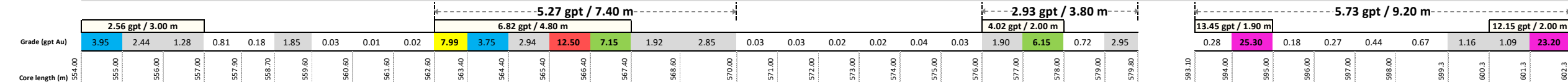
OB-20-156



OB-20-168



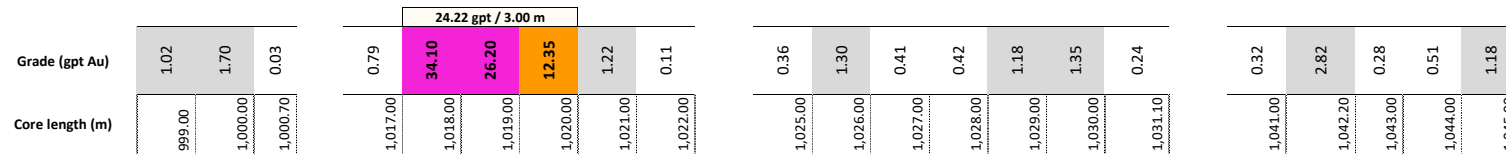
OB-20-170



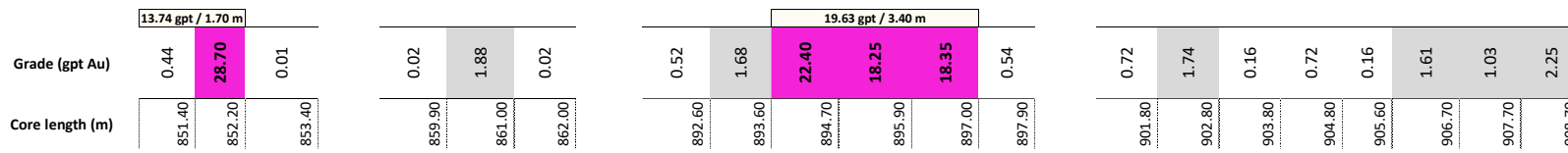
Au Grade distribution - Select drill holes (contd...)

Grade (gpt Au)	>=15.0	12.5 - 15.0	10.0 - 12.5	7.5 - 10	5.0 - 7.5	3.0 - 5.0	1.0 - 3.0
----------------	--------	-------------	-------------	----------	-----------	-----------	-----------

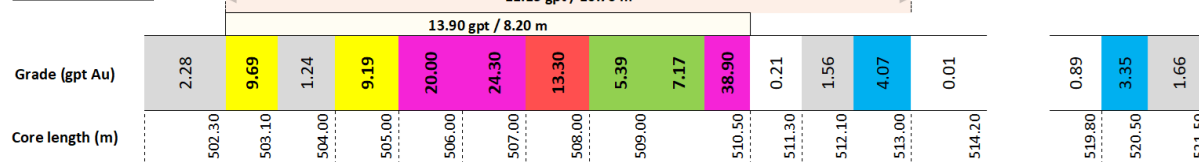
OB-20-174W1B



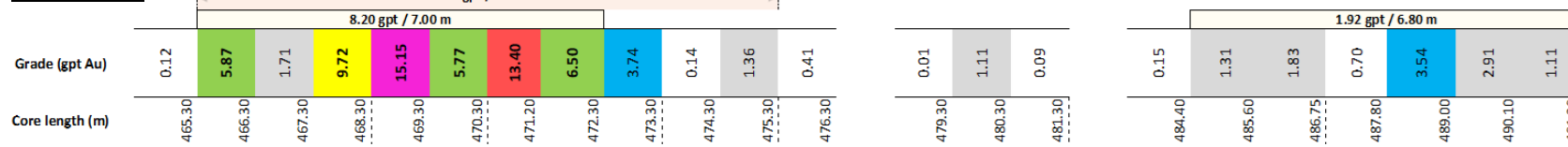
OB-20-181



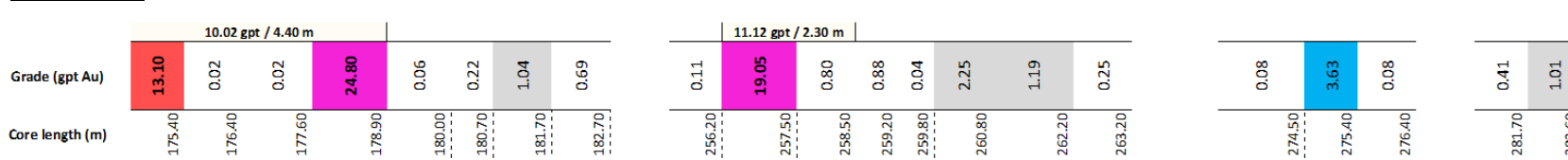
OB-21-201



OB-21-202



OB-21-207



Radisson Mining Resources: Consolidated NI-43-101 Mineral Resource Estimates



	Tonnage (t)	Grade (g/t Au)	Ounces (oz)
O'BRIEN PROJECT¹			
Indicated resources	949,700	9.48	289,400
Inferred resources	617,400	7.31	145,000
NEW ALGER PROJECT²			
<i>Pit constrained</i>			
Indicated resources	1,016,000	1.88	61,500
Inferred resources	2,322,000	1.65	123,300
<i>Out-of-Pit</i>			
Indicated resources	19,000	1.81	1,100
Inferred resources	904,000	2.23	64,700
TOTAL COMBINED: O'BRIEN & NEW ALGER³			
Indicated resources	1,984,700		352,000
Inferred resources	3,843,400		333,000

1. 43-101 Technical report for the O'Brien project, Abitibi, Québec, 3D Geo-solution, July 15, 2019

2. Updated mineral resource estimate and technical report on the New Alger Gold property, Abitibi-Témiscamingue region, Northwestern Québec, Canada, NI 43-101 & 43-101F1 technical report P&E Mining Consultants Inc, May 1, 2020

3. Numbers may not add up due to rounding

