

Radisson

MINING RESOURCES



Investor Presentation July 2024
TSXV:RDS OTCQB:RMRDF

CAUTIONARY STATEMENT REGARDING FORWARD-LOOKING INFORMATION



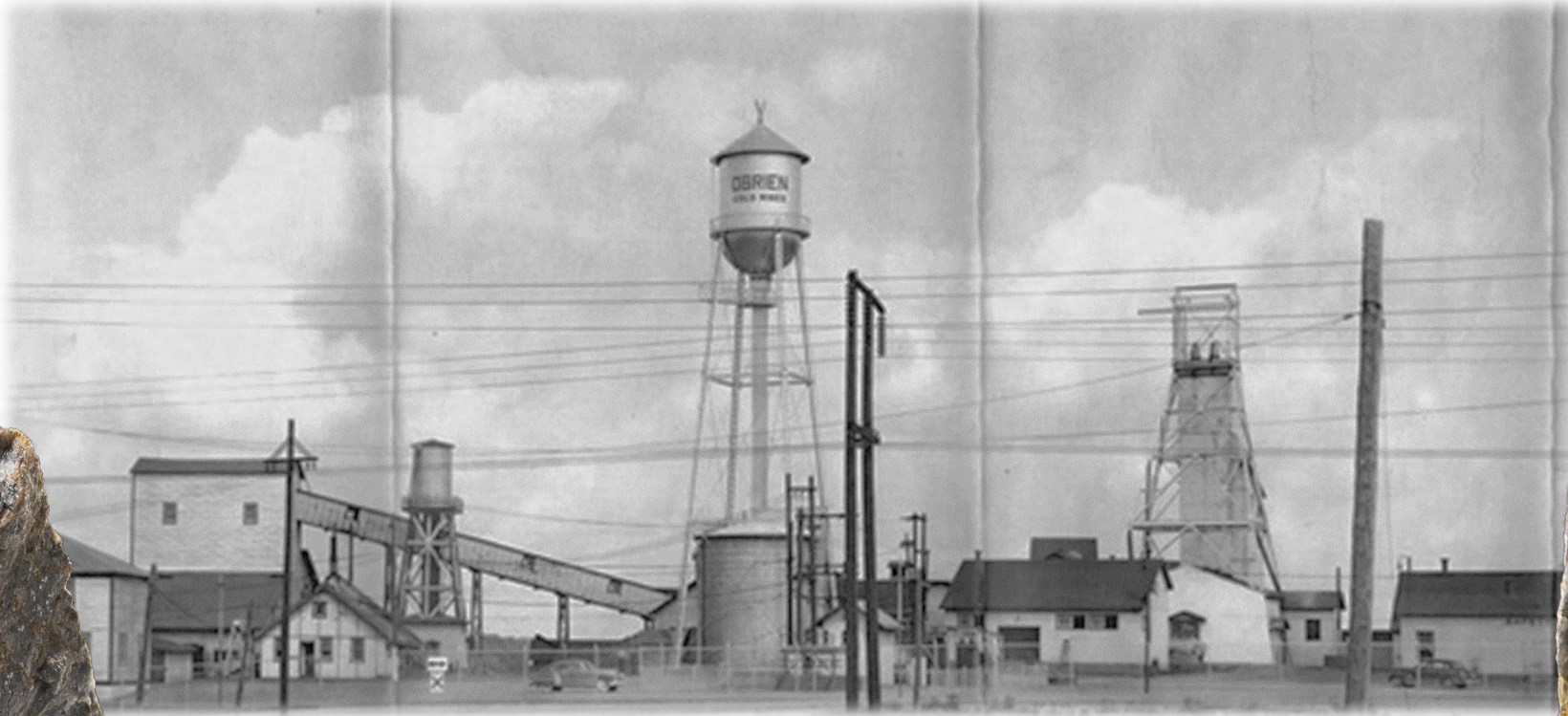
Except for historical information certain statements included in this presentation are forward-looking statements within the meaning of Canadian securities laws. Such statements may include words such as "Anticipates", "schedule", "projects", "plans", "targets", "programs", "continues", "estimates", "could", "should", "would" or "will". Forward-looking statements made in this presentation involve significant risks and uncertainties. These risks and uncertainties include the inherent risks involved in the exploration and development of mineral properties. The uncertainties involved in interpreting drilling results and other geological data. fluctuating metal prices. The possibility of project cost overruns or unanticipated costs and expenses. uncertainties relating to the availability and costs of financing needed in the future. and other factors. The Corporation disclaims any intention or obligation to update forward-looking statements if circumstances or management's estimates or opinions should change. The reader is cautioned not to place undue reliance on forward-looking statements.

All references to currency made in this presentation are in Canadian dollars unless otherwise stated.

Richard Nieminen, P.Geo., Geological advisor acts as a Qualified Person as defined in National Instrument 43-101 and has reviewed and approved the technical information in this presentation. Mr. Luke Evans P.Eng., ing (ON, QC) of SLR Consulting (Canada) Ltd. is the Qualified Person responsible for the preparation of the Mineral Resource Estimate for the O'Brien Project effective March 2, 2023.

Please see the NI 43-101 "Technical Report on the O'Brien Project, Northwestern Quebec, Canada" effective March 2, 2023, Radisson's Annual Information Form for the year ended December 31, 2023 and other filings made with Canadian securities regulatory authorities available at www.sedar.com for further details and assumptions relating to the O'Brien Gold Project.

THE O'BRIEN MINE: RICHEST MINE BY GRADE IN QUEBEC



**Historical production of 587,121 oz
from 1926 - 1957**

1.2M tonnes at 15.25 Au g/t¹



1. Technical report on the O'Brien project, Northwestern Québec, Report for NI 43-101, SLR Consulting (Canada) Ltd., March 2, 2023

c. **1Moz** of High-Grade Mineral Resources
and **Growing**

Quebec's Abitibi: Best Address for Gold
Mining. **People, Services, Infrastructure**

Five Nearby **Mines with Mills**

O'Brien's **High Quality** Au Ounces **will be
Mined**

Refreshed Board and Team with Track
Record of Major Mine Development

35,000m fully-funded drill program ongoing



BOARD OF DIRECTORS



Matt Manson **New in 2024**
President, CEO & Director

30+ years of mining experience | Led Marathon Gold's C\$500M Valentine Gold Project | Led Stornoway Diamond's C\$800M Renard Project | Northern Miner Mining Person of the Year 2017 | PDAC Viola Macmillan Award 2015



Pierre Beaudoin
Board Chairperson

30+ years of mining experience | Formerly COO (2018-2024) of SilverCrest Metals Inc. for Las Chipas Project | Formerly COO (2013-2017) of Detour Gold for Detour Lake Project. Barrick Gold, Lac Minerals Ltd. and Noranda Minerals



Michael Gentile
Independent Director & Strategic Advisor

20 years capital markets experience | Founding Partner and Senior PM at Bastion asset management | 20+ years as an active/successful mining investor



Jeff Swinoga
Independent Director

25+ years of mining experience | President, CEO & Director of Exploits Discovery Corp. | Previously National Mining and Metals Co-Leader at Ernst & Young Canada | Director, PDAC



Cindy Valence **New in 2024**
Independent Director

25+ years working on major capital projects worldwide | Previously with BHP Canada as Head of Project Services, Glencore (Xstrata) | PDAC Co-chair of the Sustainability and Lands and Regulations Committees



Lise Chénard **New in 2024**
Independent Director

40+ years of mining experience | Previously with Campbell Chibougamau Mines, Lac Minerals and Barrick Gold | Held positions as Chief Geologist at Barrick Gold and Senior Director of Mining Geology & Senior Technical Advisor for IAMGOLD

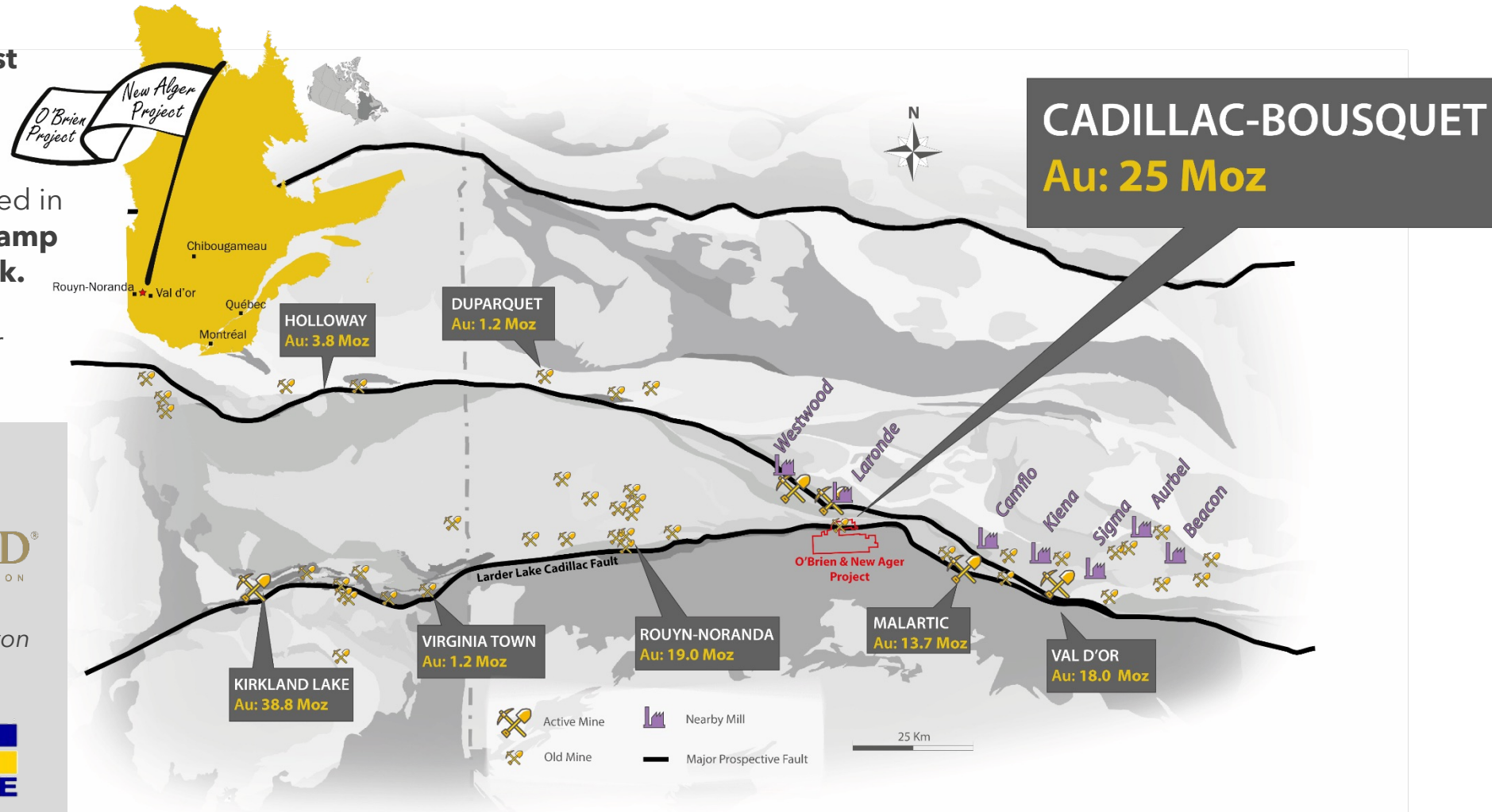


Peter MacPhail **New in 2024**
Independent Director

35+ years of mining experience | Formerly COO (2015-2022) of Alamos Gold, Aurico and Northgate Minerals. Led development of Young Davidson mine, La Yaqui Grande mine in Mexico, and initial expansion of Island Gold mine

LOCATED IN THE WORLD'S MOST PROLIFIC GOLD BELT

- **Located in the Abitibi greenstone belt** hosting +100 million Au ounces between Ontario and Quebec in eastern Canada. One of the **largest and most prolific Neoproterozoic greenstone belts** in the world.
- **The O'Brien Gold Project** is located in the **25 Moz Cadillac-Bousquet Camp** on the **Larder-Lake-Cadillac Break**.
- Surrounded by current and former **World-class gold deposits**



5 Nearby Active Mines



Laronde
Canadian Malartic



Westwood/Doyon

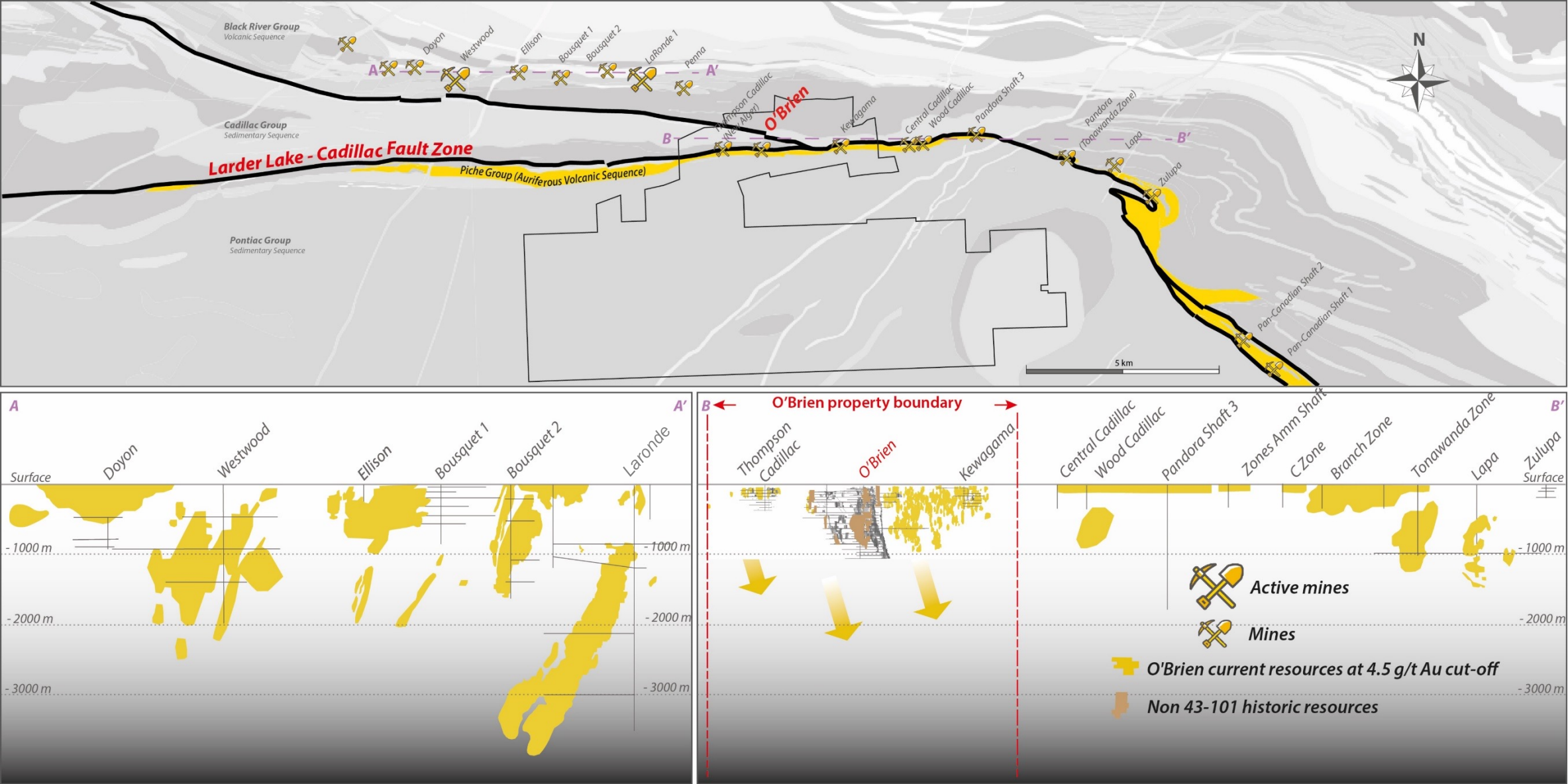


Sigma-Lamaque



Kiena

CADILLAC-BOUSQUET MINING DISTRICT

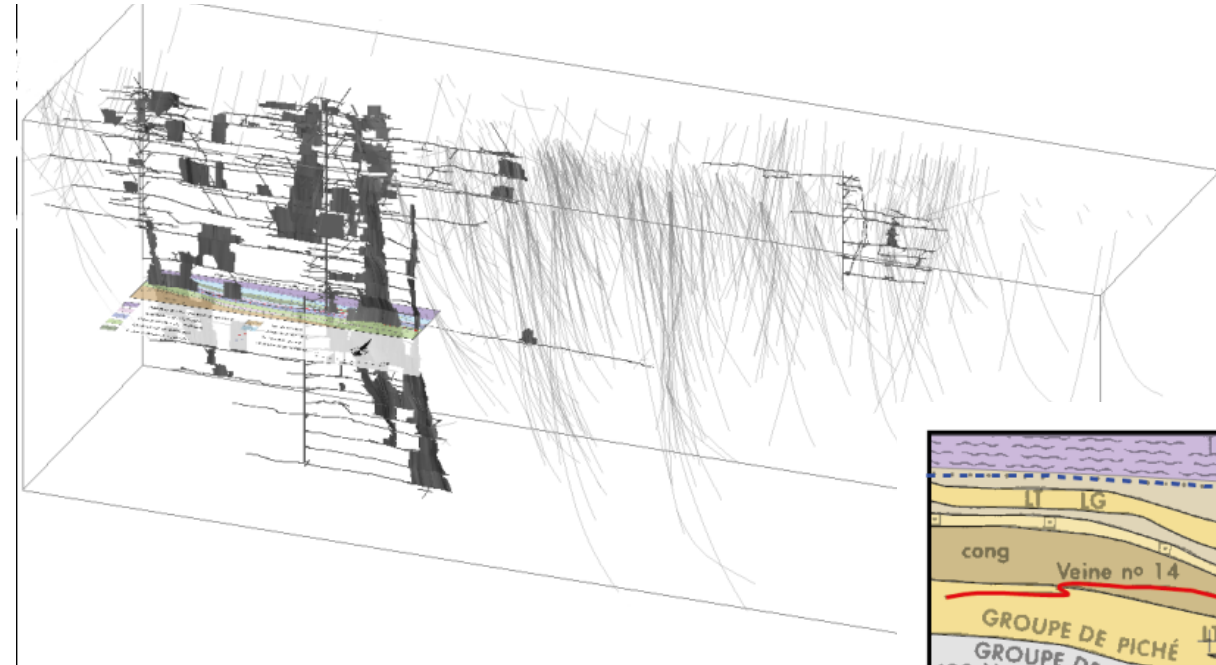


SURROUNDED BY INFRASTRUCTURE



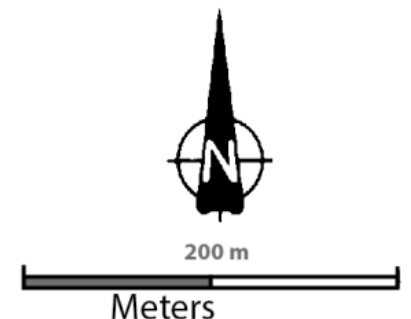
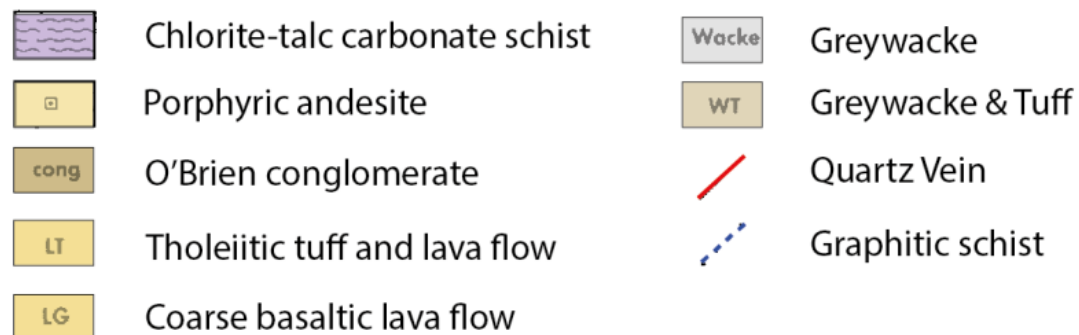
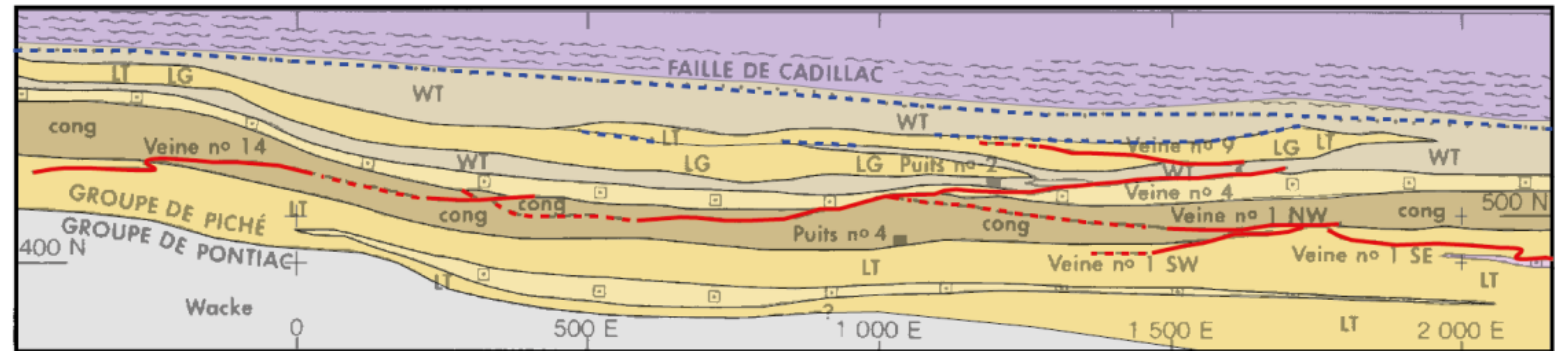
Ideally Located in the Heart of a Mature Mining Camp

- **Provincial highway**
- **Hydro-electric power**
- **Proximity to numerous under-capacity mills**
- **Access to high quality service and labour**
- **Existing 1000m deep shaft**



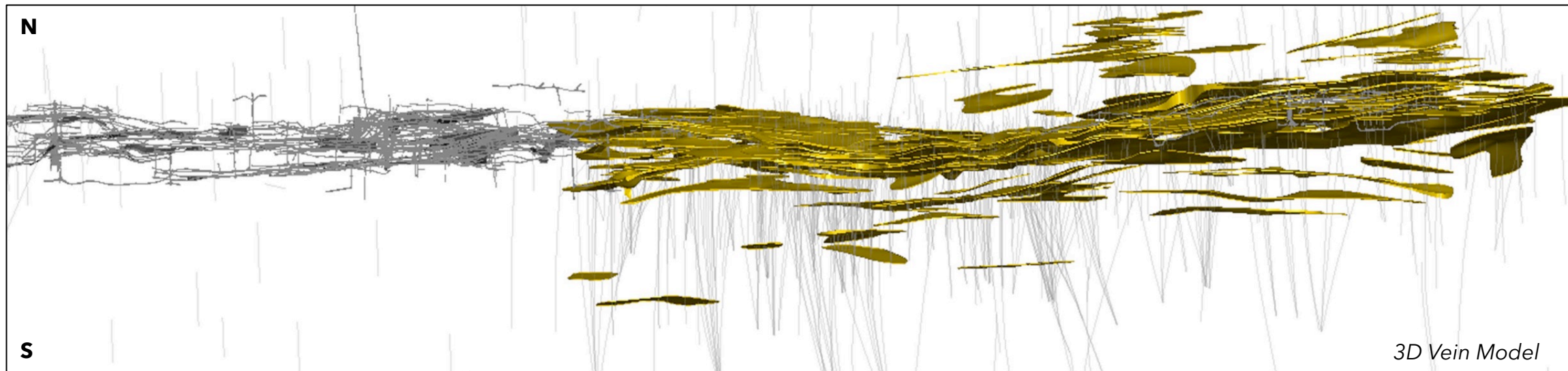
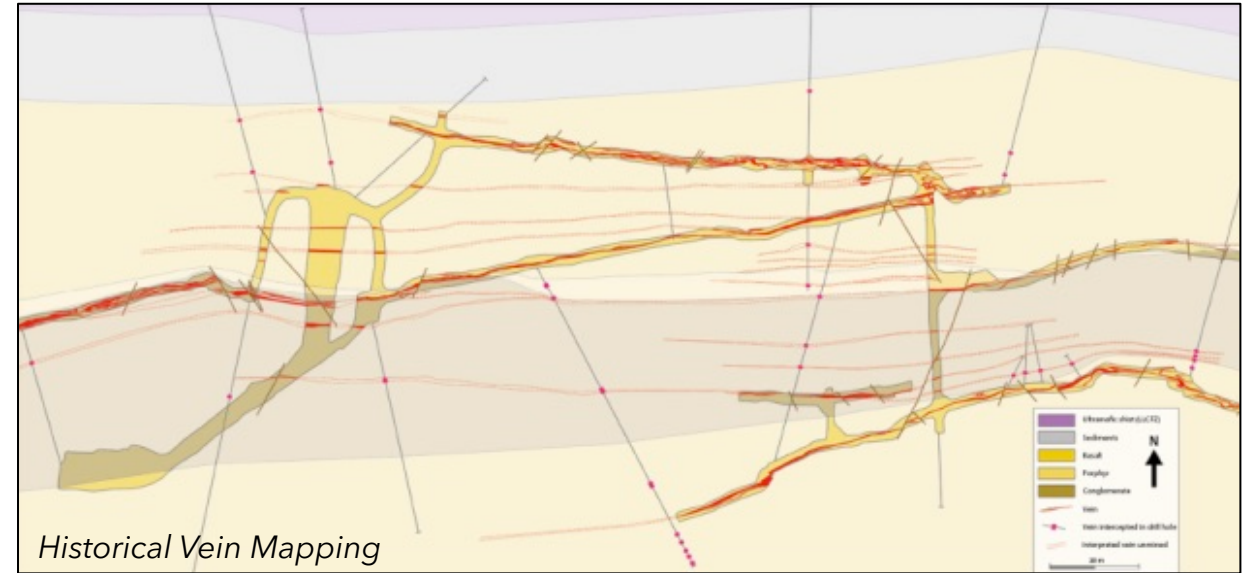
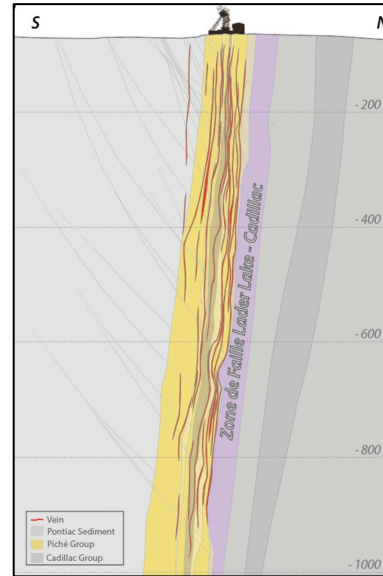
- Veins modelling is one of the most important parts of the O'Brien Mineral Resource Estimate
- We know what has been mined in the past at the Old O'Brien Mine

- All the galleries have been mapped and we understand very well the vein behaviour in relation to the stratigraphy of the geological units
- At large-scale the veins are continuous, sub-parallel to the stratigraphy and show slight orientation variations within the same stratigraphic unit.

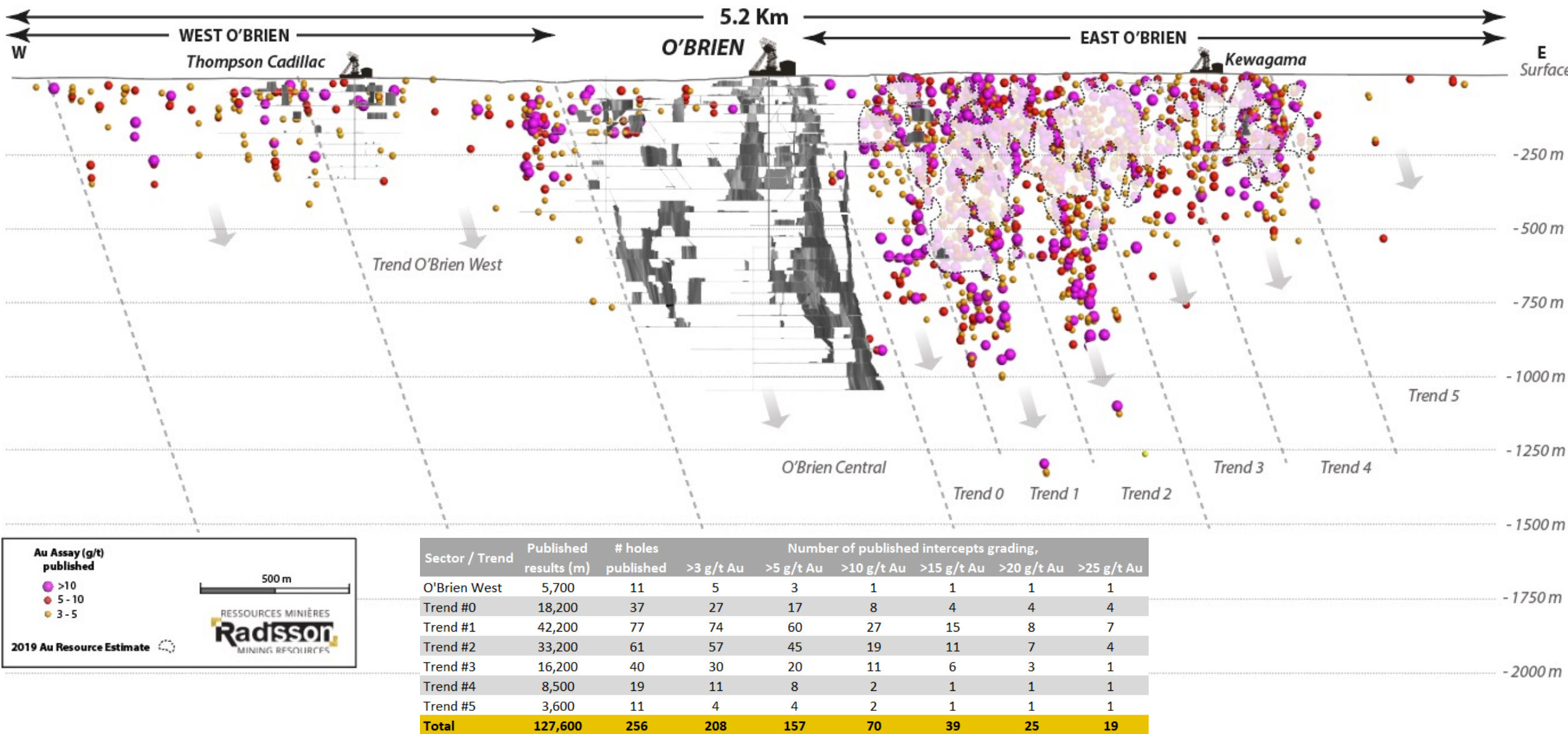


WELL UNDERSTOOD GEOLOGY (2)

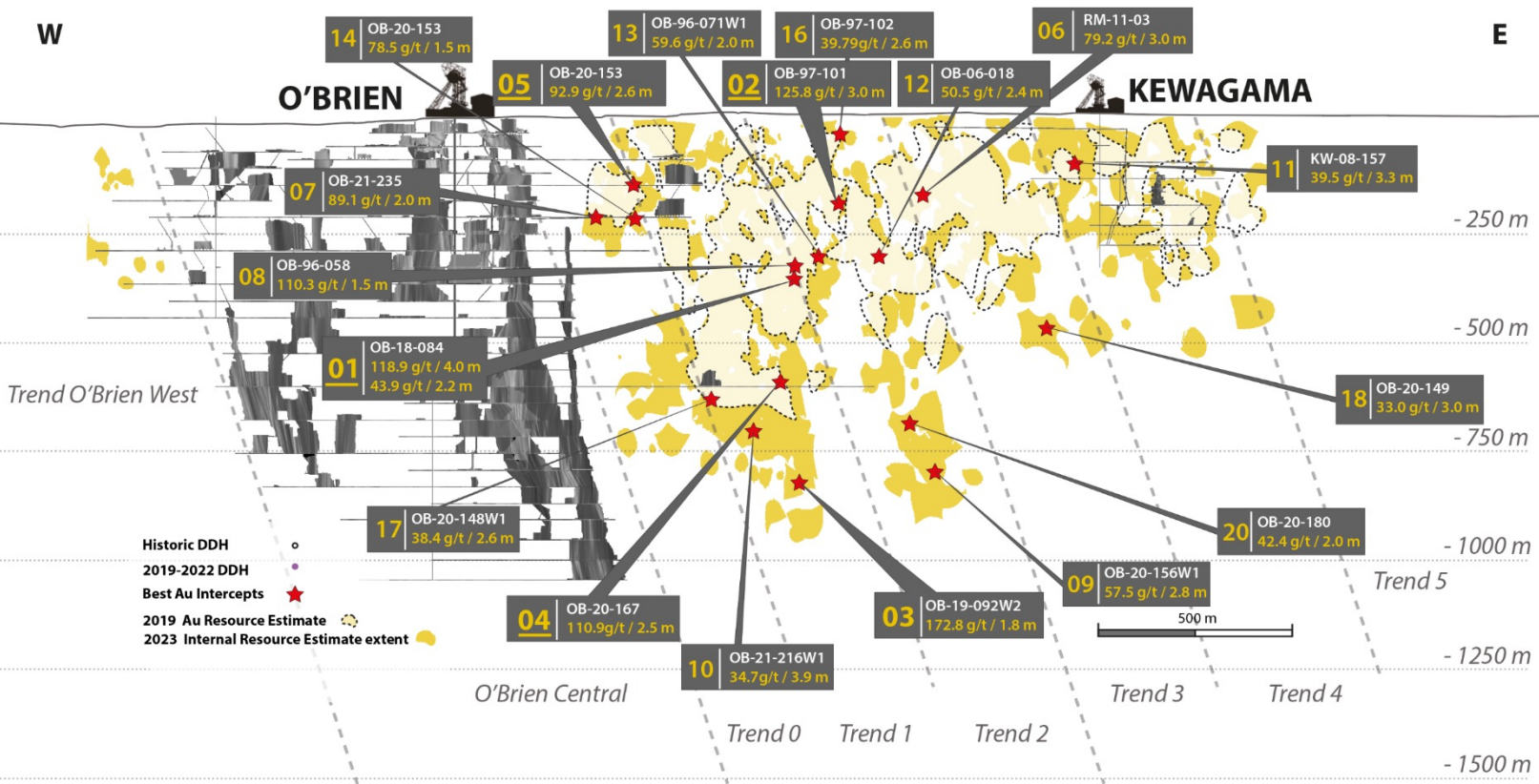
- A Vein Model has been created with at least 134 Mineralized Zones
- The model is dynamic and adjusted based on ongoing drilling
- The model respects vein geometries and relationships shown in the historically mined veins
- The model represents domains used to restrict the 2023 MRE



127,600 METRES DRILLED BETWEEN 2019 & 2023

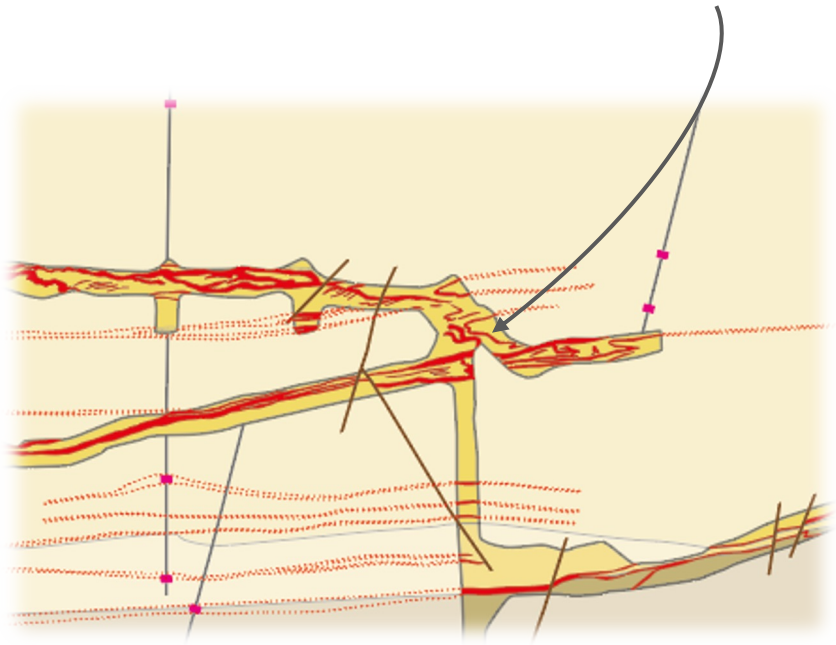
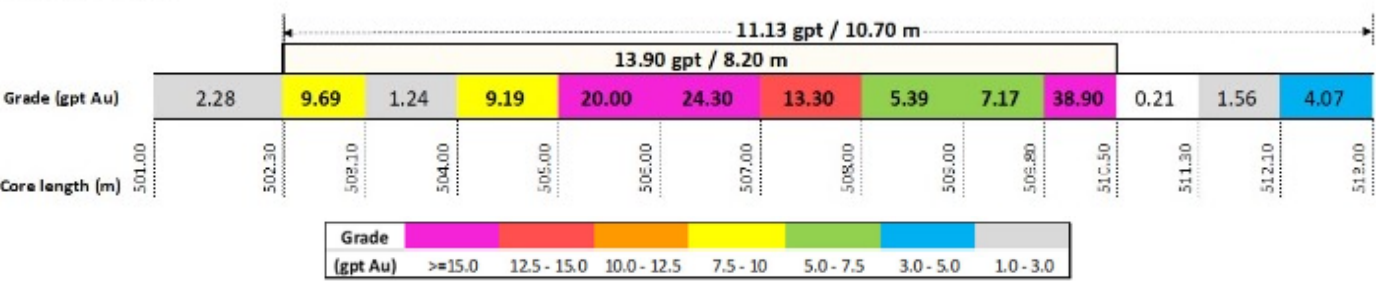


CONTINUITY OF MINERALIZATION AND GRADE



Veins can be thick such as 8 m of continuous high grade !

OB-21-201



2023 O'BRIEN MINERAL RESOURCE ESTIMATE

Cut-off Grade		Indicated Mineral Resources		
	O'Brien Deposit	Tonnage	Grade	Metal
	Resource date	(t)	(g/t Au)	(oz Au)
4.5 g/t Au	July 2019	1,115,000	8.85	318,000
	March 2023	1,517,000	10.26	501,000
	Increase	+402,000	+1.41	+183,000
		+36%	+16%	+58%

Inferred Mineral Resources		
Tonnage	Grade	Metal
(t)	(g/t Au)	(oz Au)
777,000	6.73	168,000
1,616,000	8.64	449,000
+839,000	+1.91	+281,000
+108%	+28%	+167%

3.0 g/t Au	July 2019	1,906,000	6.67	409,000
	March 2023	2,118,000	8.46	576,000
	Increase	+212,000	+1.79	+167,000
		+11%	+27%	+41%

1,500,000	5.29	255,000
3,668,000	5.79	683,000
+2,168,000	+0.51	+428,000
+144%	+10%	+168%

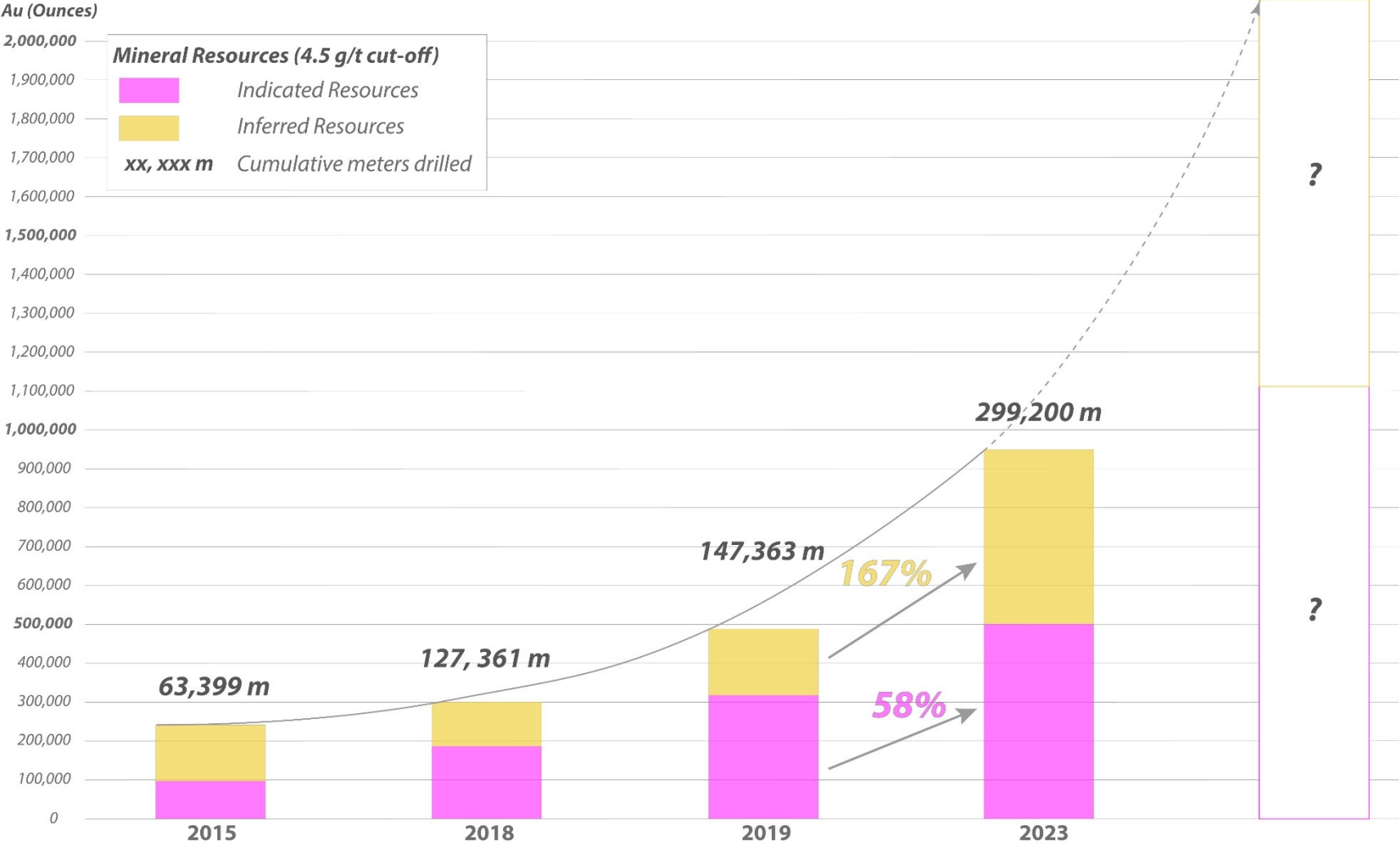
Notes to the Mineral Resources

1. CIM (2014) definitions were followed for Mineral Resources.
2. Mineral Resources are reported above a cut-off grade of 4.5 g/t Au based on a C\$230/t operating cost.
3. Mineral Resources are estimated using a long-term gold price of US\$1,600/oz Au, a US\$/C\$ exchange rate of 1:1.25, and a metallurgical recovery of 85%.
4. Wireframes were modelled at a minimum width of 1.2 m.
5. Bulk density varies by deposit and lithology and ranges from 2.00 t/m³ to 2.82 t/m³.
6. Mineral Resources that are not Mineral Reserves do not have demonstrated economic viability. The estimate of mineral resources may be materially affected by environmental, permitting, legal, title, socio-political, marketing, or other relevant issues including risks set forth in Radisson's Annual Information Form for the year ended December 31, 2023 and other filings made with Canadian securities regulatory authorities and available at www.sedar.com.
7. Numbers may not add due to rounding.

Notes on Historical Disclosure of Mineral Resources at the O'Brien Gold Project

1. Evans, L., 2023, NI 43-101 Technical Report on the O'Brien Project, Northwestern Québec, Canada
2. Williamson, K., 2019, NI 43-101 Technical Report and Mineral Resource Estimate for the O'Brien Project,
3. Beausoleil, C., 2018, NI 43-101 Technical Report and Mineral Resource Estimate for the O'Brien Project, Abitibi, Québec, prepared for Radisson Mining Resources Inc. by InnovExplo, May 3, 2018.
4. Richard, P., Turcotte, B., Carrier, A., 2015, Technical Report for the O'Brien Project, Abitibi, Quebec, prepared by InnovExplo for Radisson Mining Resources Inc., June 3, 2015.

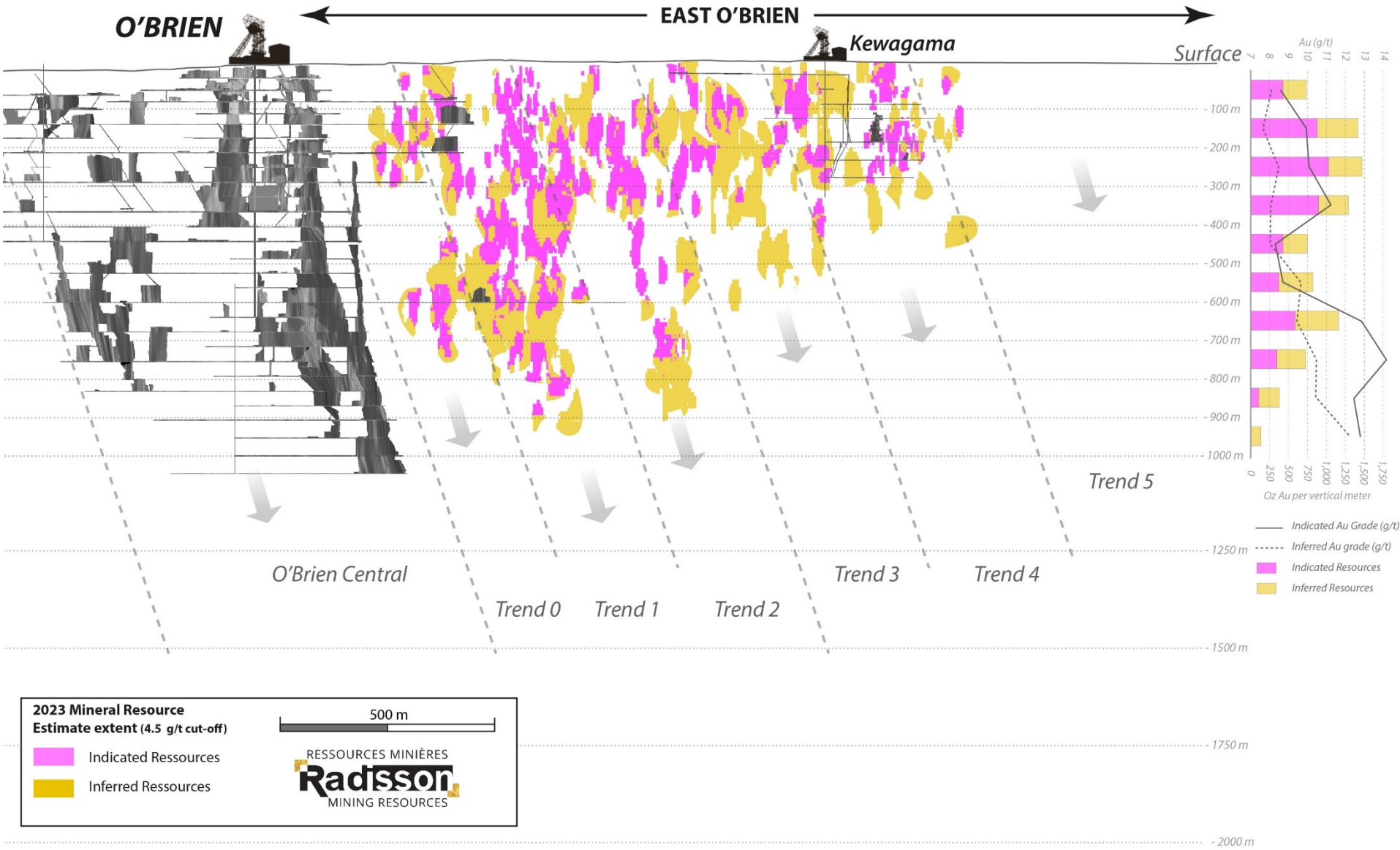
STEADY GROWTH IN MINERAL RESOURCES



- Notes to the Mineral Resources**
1. CIM (2014) definitions were followed for Mineral Resources.
 2. Mineral Resources are reported above a cut-off grade of 4.5 g/t Au based on a C\$230/t operating cost.
 3. Mineral Resources are estimated using a long-term gold price of US\$1,600/oz Au, a US\$/C\$ exchange rate of 1:1.25, and a metallurgical recovery of 85%.
 4. Wireframes were modelled at a minimum width of 1.2 m.
 5. Bulk density varies by deposit and lithology and ranges from 2.00 t/m3 to 2.82 t/m3.
 6. Mineral Resources that are not Mineral Reserves do not have demonstrated economic viability. The estimate of mineral resources may be materially affected by environmental, permitting, legal, title, socio-political, marketing, or other relevant issues including risks set forth in Radisson’s Annual Information Form for the year ended December 31, 2023 and other filings made with Canadian securities regulatory authorities and available at www.sedar.com.
 7. Numbers may not add due to rounding.

- Notes on Historical Disclosure of Mineral Resources at the O’Brien Gold Project**
1. Evans, L., 2023, NI 43-101 Technical Report on the O’Brien Project, Northwestern Québec, Canada
 2. Williamson, K., 2019, NI 43-101 Technical Report and Mineral Resource Estimate for the O’Brien Project, Abitibi, Québec, prepared for Radisson Mining Resources Inc. by InnovExplo, May 3, 2018.
 3. Beausoleil, C., 2018, NI 43-101 Technical Report and Mineral Resource Estimate for the O’Brien Project, Abitibi, Québec, prepared for Radisson Mining Resources Inc. by InnovExplo, May 3, 2018.
 4. Richard, P., Turcotte, B., Carrier, A., 2015, Technical Report for the O’Brien Project, Abitibi, Quebec, prepared by InnovExplo for Radisson Mining Resources Inc., June 3, 2015.

2023 MRE – BREAKDOWN OF INDICATED/INFERRED



2023 MRE – BREAKDOWN OF GRADE

Longitudinal

O'BRIEN

KEWAGAMA

Surface

- 250 m

- 500 m

- 750 m

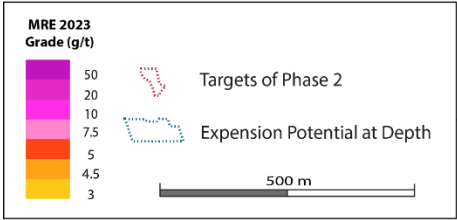
- 1000 m

- 1250 m

- 1500 m

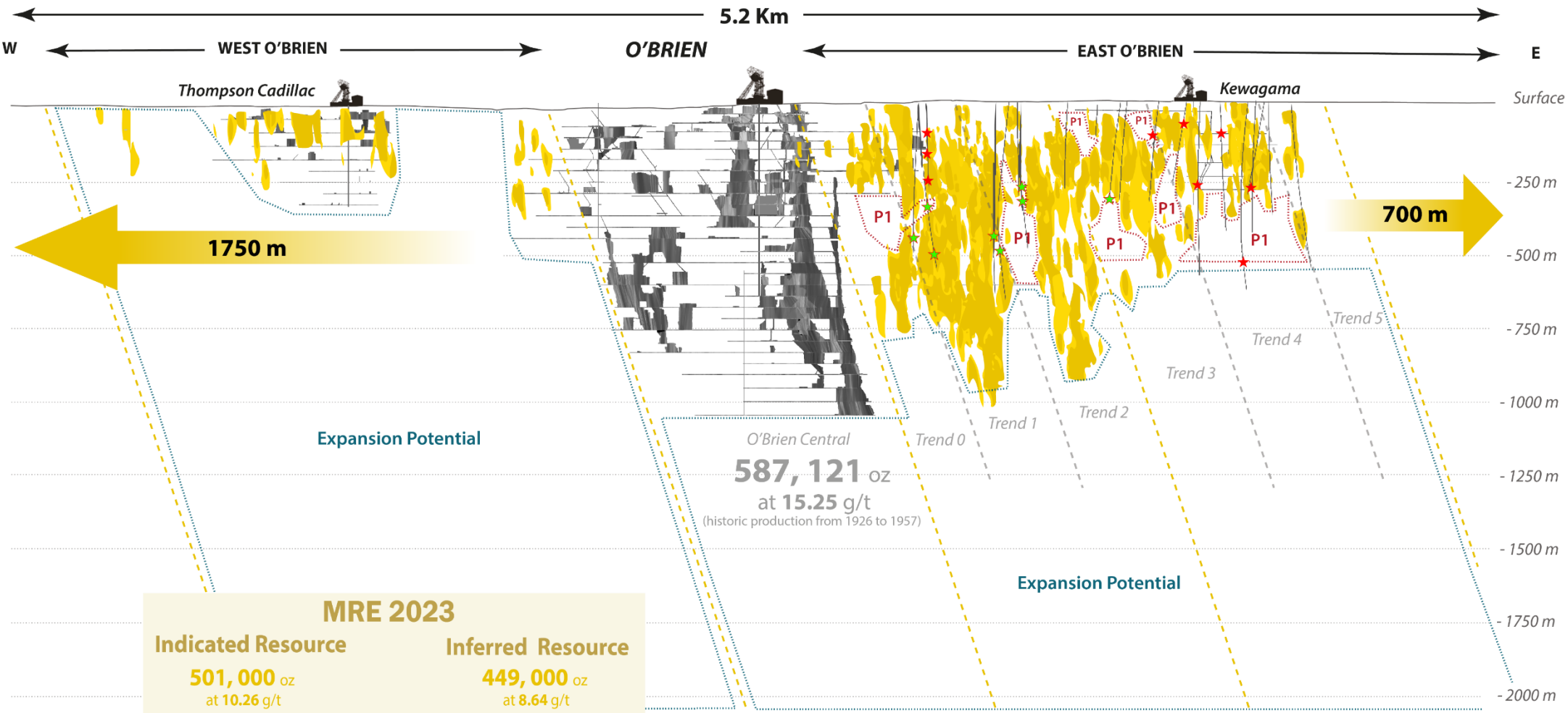
- 1750 m

- 2000 m



Expansion Potential

O'BRIEN OPEN IN ALL DIRECTIONS



2023 Mineral Resource Estimate		2023-2024 Drilling Program Phase 1	
	Estimate extent (3.0 g/t cut-off)		Trace of holes completed
	Estimate extent (4.5 g/t cut-off)		Visible Gold observed Assays received
			Visible Gold observed Assays pending
			Targets of Phase 1
			Expansion Potential at Depth
			500 m

DRILL PROGRAM EXPANDED TO 35,000 METRES

Fully-funded program expanded to 35,000m

- **60-70% focused on resource expansion** (~15,000 m for 27 holes)
- **30-40% focused on high-priority step-out and exploration targets**
 - Historic O'Brien Deep and Trend 1 Deep (8,200 m for 6 holes)
 - New Alger target (2,400 m for 5 holes)
- 2 drill rigs onsite for a minimum of 22,000m in 2024
- Assays pending (5,800m) from 11 ddh **including 8 visible gold intercepts**



Visible gold encountered
in hole OB-24-320
Unreleased Drill Intercept



Visible gold encountered in hole OB-24-317
Unreleased Drill Intercept

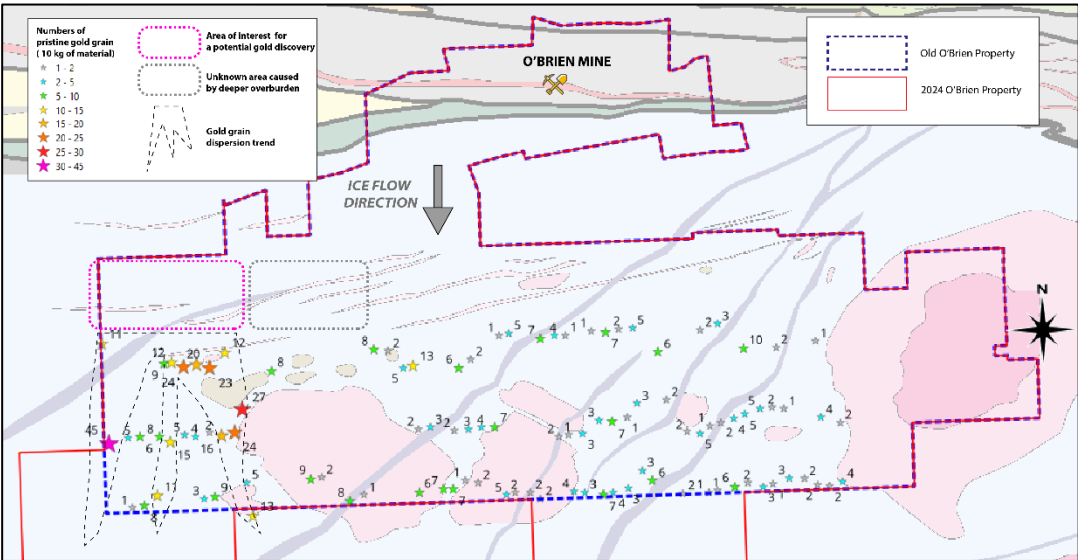
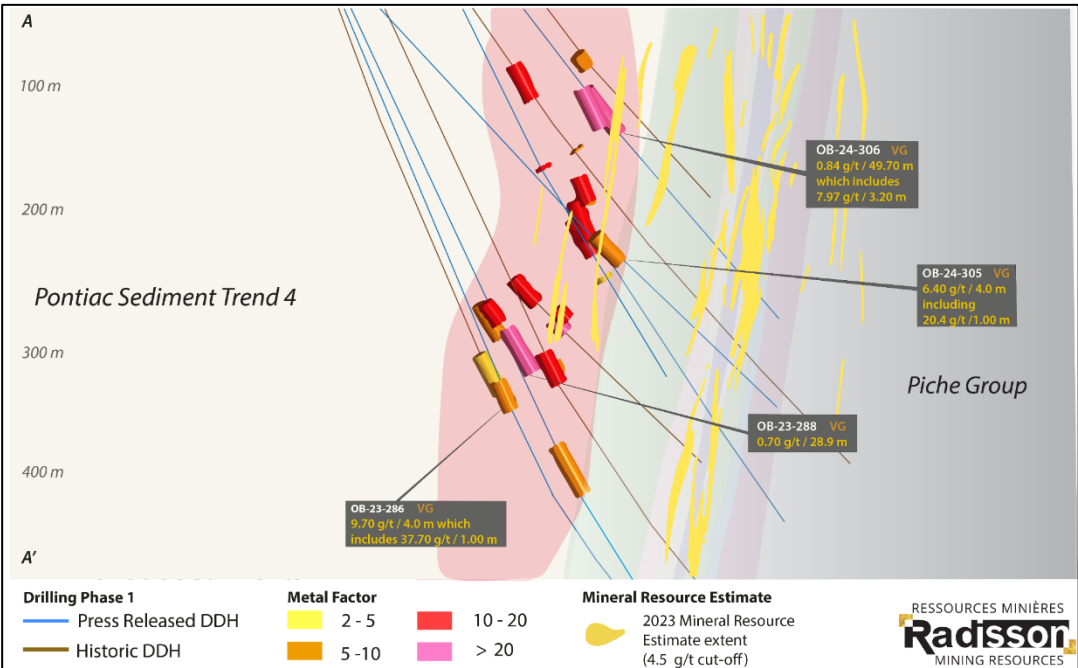
EXPLORATION UPSIDE IN THE PONTIAC SEDIMENTS

Gold in Drilling within Pontiac Sediments when Targeting Main High-Grade Deposit

- OB-24-306 intersected 0.84 g/t Au over 49.70 m, including 3.97 g/t Au over 8.20 m
- OB 23-288 intersected 0.70 g/t Au over 28.90 m, including 3.96g/t Au over 4.50 m

Gold in Till Samples over Pontiac Sediments in New Alger Property

- Brand new target area with more than 2km strike length with potential for gold discovery identified
- 115 glacial till surface samples collected and analyzed with 14 anomalous samples forming gold rain tail
- New Alger Property now covers 74.3km²



Drilling News-Flow

- 2 drill rigs onsite: Results from more than 27,000 m of drilling to be released
- Historic O'Brien mine - Introductory deep drilling below underground infrastructure
- Current resources - 300 m below Trends #0/1
- New Alger - 2km target
- Assays results from 12 historical DDH from Pontiac sediments (Trend #4)

Development Related Milestones

- Ongoing Metallurgy studies and flowsheet characterization
- Ongoing environmental studies and guidance on permitting timelines

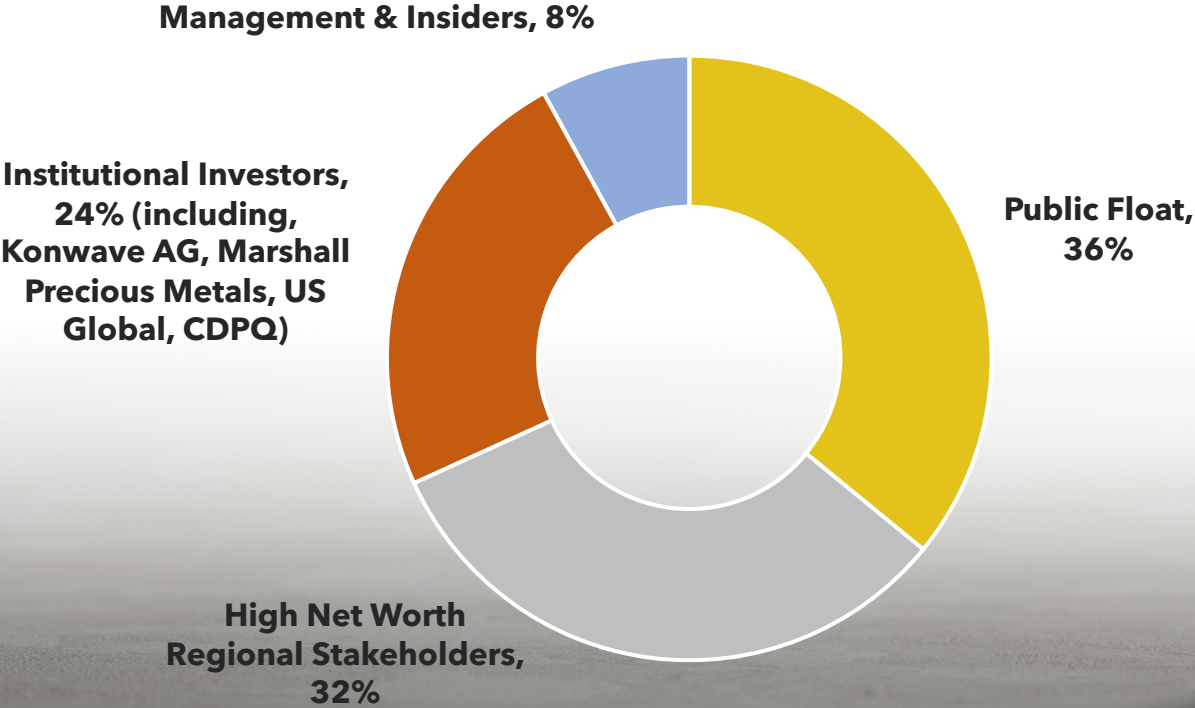


CAPITALIZATION AND BALANCE SHEET

\$57.8 Million
Market Capitalization
As of July 15, 2024

\$6 Million
Cash Position
Unaudited, Estimated as of June 30, 2024

321.1 Million
Shares Outstanding
As of July 15, 2024



CONTACT INFORMATION



Matt Manson

President, CEO & Director
mmanson@radissonmining.com

Hubert Parent-Bouchard

Chief Financial Officer
hpbouchard@radissonmining.com

Kristina Pillon

Manager, Investor Relations
kpillon@radissonmining.com

Radisson Mining Resources Inc.

50 rue du Petit-Canada
Rouyn-Noranda, Qc J0Y 1C0
www.radissonmining.com

Investor Inquiries: 604.908.1695

