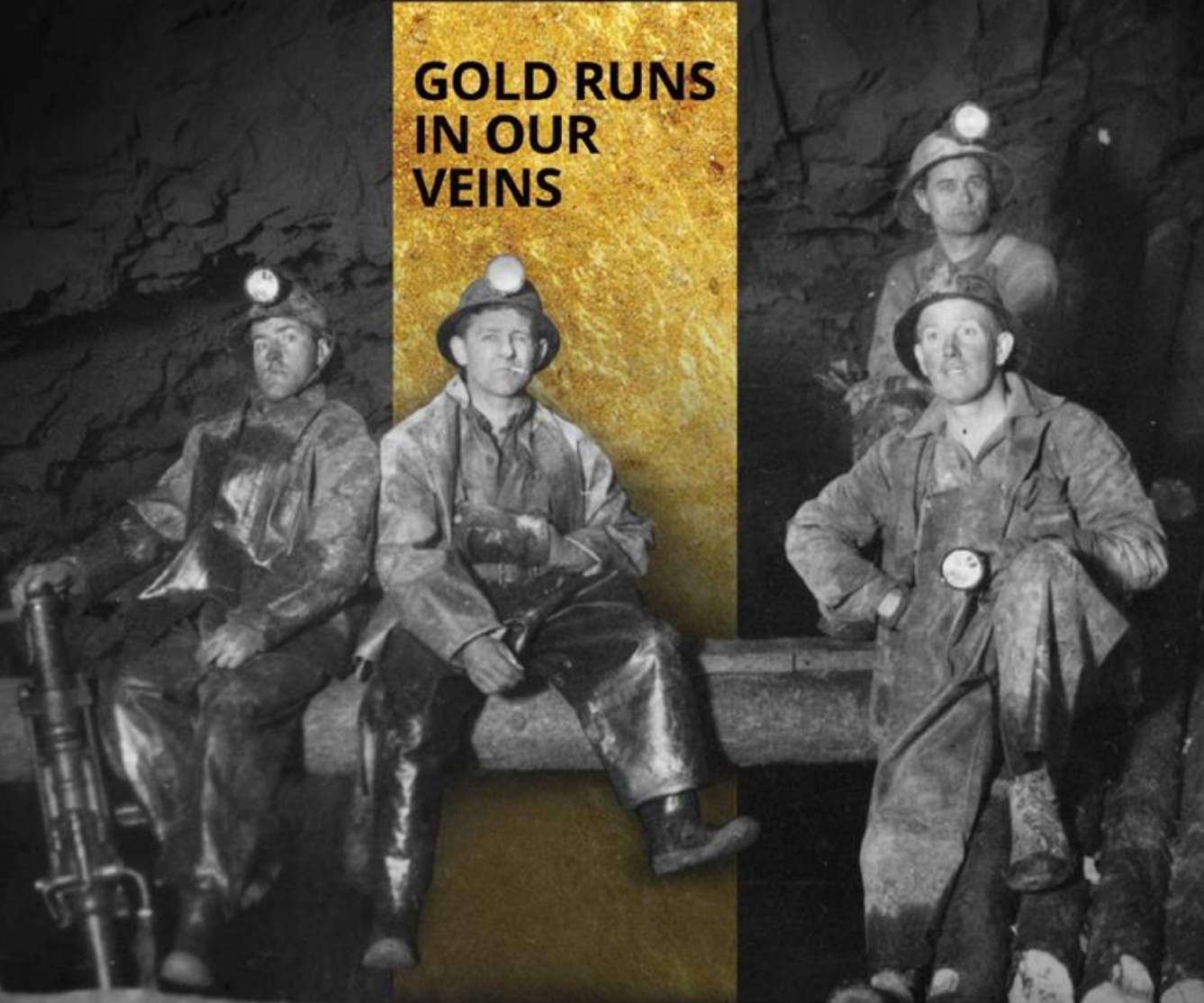




TSXV:RDS

**CREATING VALUE IN
A WORLD
RENOWNED GOLD
MINING CAMP**

**GOLD RUNS
IN OUR
VEINS**



Cautionary Statement

CAUTIONARY STATEMENT REGARDING FORWARD-LOOKING INFORMATION

Except for historical information certain statements included in this presentation are forward-looking statements within the meaning of Canadian securities laws. Such statements may include words such as “Anticipates”, “schedule”, “projects”, “plans”, “targets”, “programs”, “continues”, “estimates”, “could”, “should”, “would” or “will”. Forward-looking statements made in this presentation involve significant risks and uncertainties. These risks and uncertainties include the inherent risks involved in the exploration and development of mineral properties. the uncertainties involved in interpreting drilling results and other geological data. fluctuating metal prices. the possibility of project cost overruns or unanticipated costs and expenses. uncertainties relating to the availability and costs of financing needed in the future. and other factors. The Corporation disclaims any intention or obligation to update forward-looking statements if circumstances or management’s estimates or opinions should change. The reader is cautioned not to place undue reliance on forward-looking statements.

All references to currency made in this presentation are in Canadian dollars unless otherwise stated.

Richard Nieminen, P.Geo., acts as a Qualified Person as defined in National Instrument 43-101 and has reviewed and approved the technical information in this presentation.

THE O'BRIEN MINE: RICHEST GOLD MINE BY GRADE IN QUEBEC

HISTORICAL PRODUCTION OF 587,121 OZ FROM 1926 – 1957 (1.2 M TONNES AT 15.25 G/T)¹



Why Radisson?

O'Brien is one of the highest-grade undeveloped gold projects in Canada/USA

- Indicated grade of 9.48 g/t is among the highest of undeveloped gold projects not owned by a producer.

Excellent location in one of the best mining camps in the world

- Bousquet-Cadillac Mining Camp - prolific gold camp in the Abitibi (Quebec) which has produced ~25 Moz in 100 years.
- High profile neighbors including Agnico-Eagle (LaRonde, LZ5 and Lapa), IAMGOLD (Westwood), Wesdome (Kiena) and Eldorado (Lamaque)
- Access to power, infrastructure, spare milling capacity, skilled labour and support services.

Exploration upside next to the old O'Brien Mine, historically the richest gold mine in Quebec

- Claims cover more than a 5 km strike length, including over 2.5 km to the east and west of the past producing O'Brien Mine, historically the highest-grade gold mine in Quebec
- Similar geology & structural setting as the old O'Brien mine on the property
- Majority of current resources within a 1 km strike (vs over 5x available strike) and within a vertical depth of 500 m (mines in the camp typically extend to well over 1 km).
- Robust litho-structural model and more than 75 years of historical production and exploration data to guide exploration efforts

Experienced team and strong balance sheet

- Team with the right combination of capital markets and technical experience.
- Cash position of \$16 M¹. Funded to complete >130,000 m of drilling through 2021 (including 60,000 m in 2019-20 and an additional 70,000 m in 2021)

Strong institutional and insider ownership

- 14% insider ownership and 36% institutional ownership.
- 2.6% owned by Rob McEwen (Founder of Goldcorp); 3.4% owned by Marshall Precious Metals (managed by David Garofalo, former CEO of Goldcorp, former CEO of Hudbay)

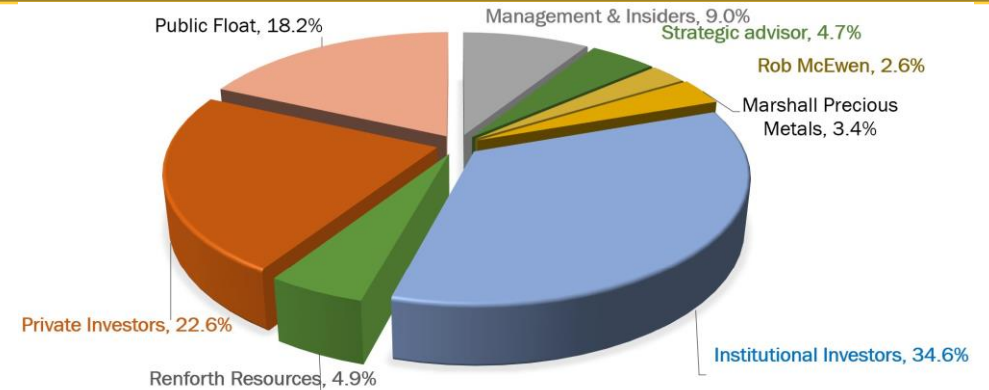
Company Overview

The O'Brien Gold Project

- High-grade, underground gold project in the Cadillac-Bousquet Mining Camp (Abitibi, Quebec)
- 5,800 ha land package including 5.2 km strike along the Cadillac Break
- Includes >2.5 km strike to the east and west of the past producing O'Brien Mine (historical production of 587 koz @ 15.25 g/t)
- MRE July 2019: 289 koz @ 9.48 g/t (Indicated), 145 koz @ 7.31 g/t (Inferred)
- New litho-structural model (Feb 2019)
- 60,000 m drill program underway (2019/20); Funded for up to 70,000 m of additional drilling through 2021.

Share Price (C\$) ³	\$0.33
52 Week Range (C\$)	\$0.10 - \$0.40
Market Capitalization (C\$ M) ³	\$75.8
Shares Outstanding, Basic (\$ M) ¹	244.4
Options Outstanding (\$ M) ¹	10.3
Warrants Outstanding (\$ M) ¹	24.6
Shares Outstanding, FD (\$ M) ¹	279.3
Cash position (C\$ M) ¹	\$16.0

Ownership Breakdown²



Top holders

#	Top Holders	Shares	%
1	OCIM PM	16.2	6.6%
2	1832 AM	15.7	6.4%
3	Renforth Resources	12.0	4.9%
4	Michael Gentile (Strategic Advisor)	11.5	4.7%
5	US Global	8.5	3.5%
6	Jean Dion (Director)	8.3	3.4%
7	Marshall Precious Metals	8.2	3.4%
8	Mario Bouchard (CEO)	7.2	3.0%
9	Rob McEwen	6.4	2.6%
10	Caisse de dépôt	5.9	2.4%
11	SIDEX	4.9	2.0%
12	Denis Lachance (Chairman)	3.7	1.6%

Experienced Leadership

BOARD OF DIRECTORS

DENIS LACHANCE Eng.
Chairman and Interim CFO

35+ years mining experience | Sr positions with Koniambo Nickel, Xstrata (Raglan), Noranda, TVX (Casa Berardi), Agnico Eagle (Goldex).

MARIO BOUCHARD
CEO, Director

25 years in the Brokerage industry | CIM Rouyn-Noranda branch director for 26 years | President of Admirio Industriel inc.

RÉJEAN GOURDE, Eng.
Director

40+ years mining industry experience | President & CEO of Reunion Gold | Senior positions with Falconbridge and Cambior

JEAN DION
Director

Visionary and one of the most influential entrepreneurs in Rouyn-Noranda | Founder of the Dion Group

TONY BRISSON, P. Geo.
Director

25+ years of mining/geology experience | Senior Exploration Manager at Quebec Precious Metals | Senior positions with Goldcorp Inc. (Eleonore Mine), Cambior

DENIS BOIS
Director

40+ years of mining experience | URSTM Director (1989 to 2017) | Director, Board of Fonds de solidarité FTQ A-T

LUC SIMONEAU
Director

President & founder of Micro ML inc. a computer and IT firm

MANAGEMENT TEAM

MARIO BOUCHARD
CEO

See “Board of Directors”

RAHUL PAUL
President

12+ years capital markets experience | Previously Director & Precious Metals Analyst at Canaccord Genuity

RICHARD NIEMINEN P.Geo
Exploration Manager

30 years of mining/exploration experience | Twice member of teams that won the AEMQ Prospector of the Year Award

SYLVAIN DOIRE
Environment and Sustainable
Development Manager

25 years of experience, 10 years at the Ministry of Environment, Quebec | Former Environment Coordinator for Agnico Eagle (Meadowbank and Méliadine), Falco Resources

HUBERT P. BOUCHARD
Director, Corporate Development

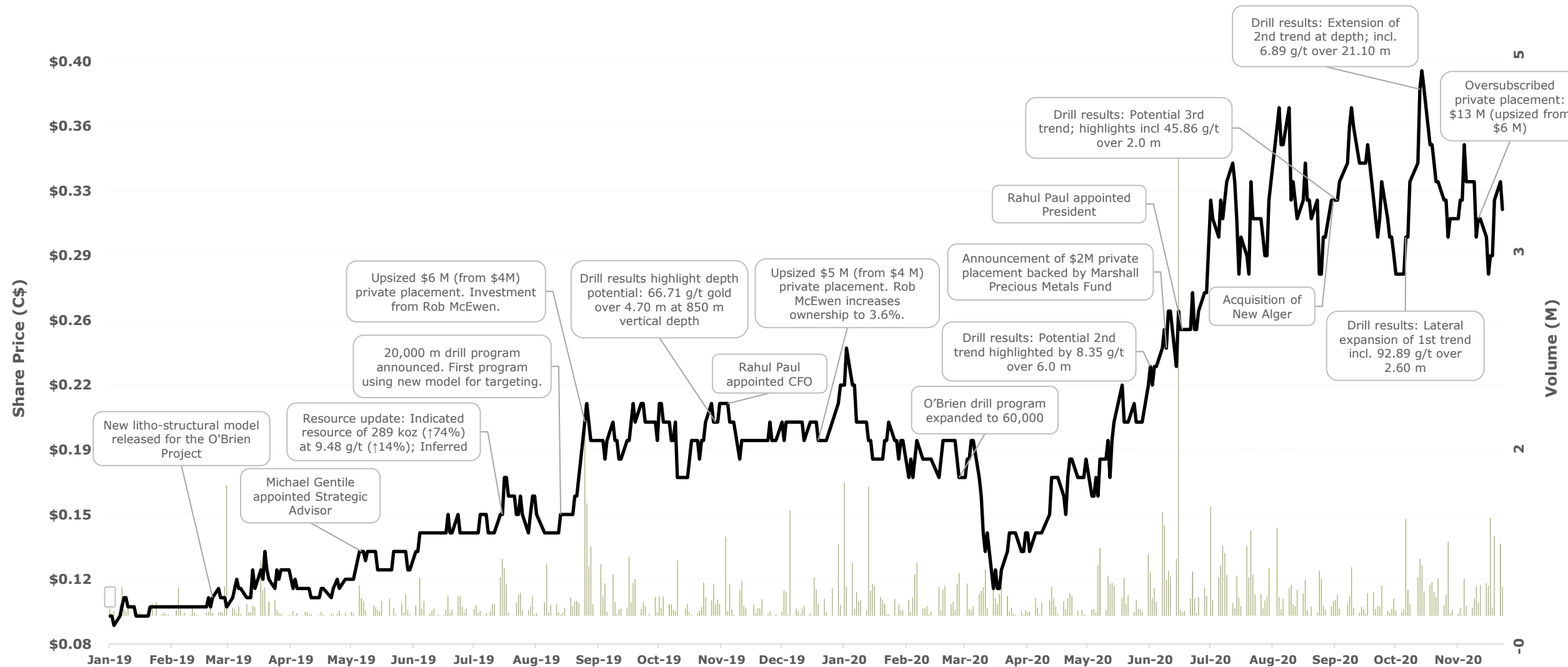
10 years accounting/finance/mining experience | Treasurer & Director, CIM Rouyn-Noranda branch

STRATEGIC ADVISOR

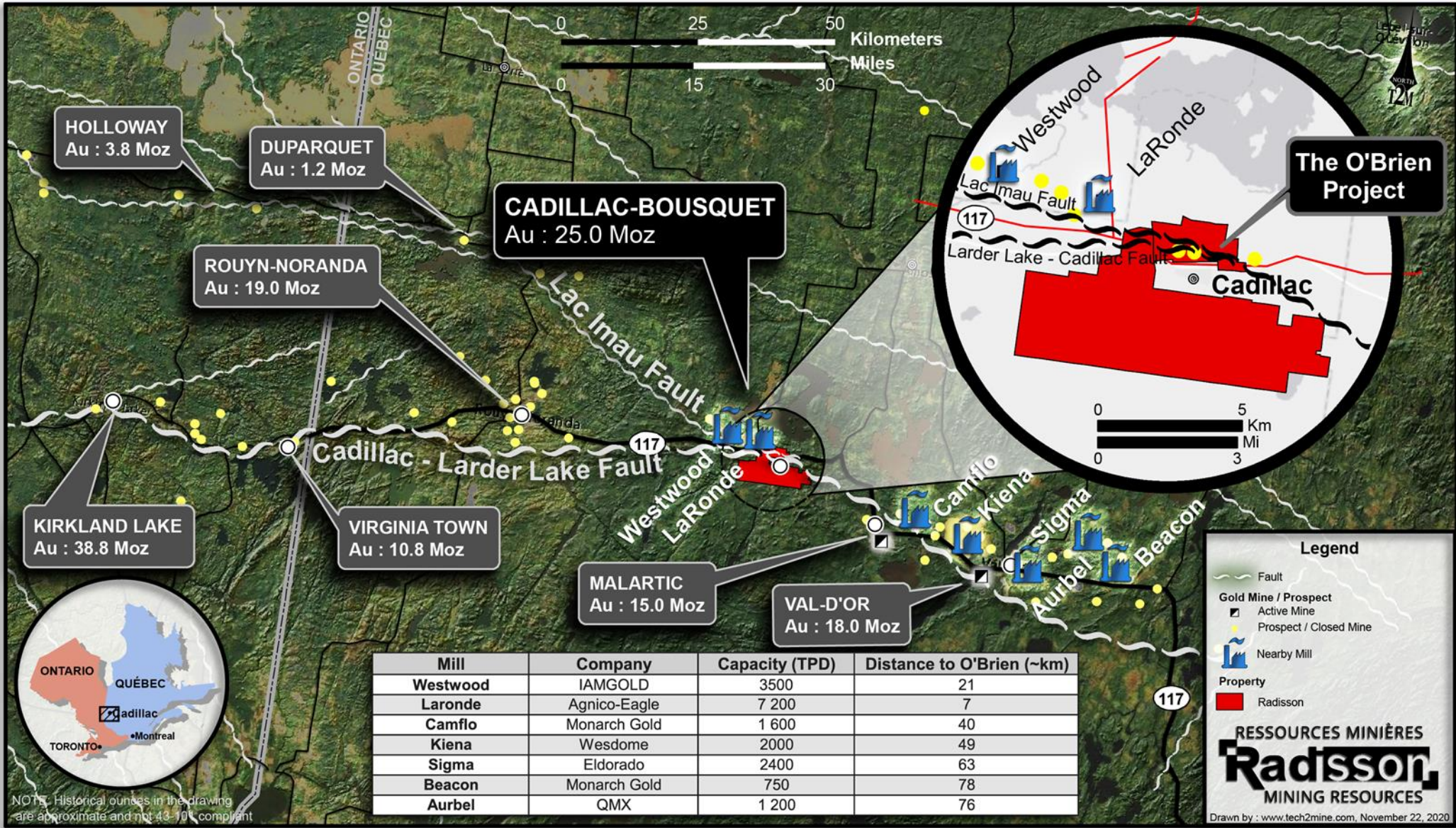
MICHAEL GENTILE, CFA
Strategic Advisor

15 years capital markets experience | PM with Formula Growth | Founder of the successful FG Alpha Fund | 20+ years as an active/successful mining investor

Building on a successful 2019

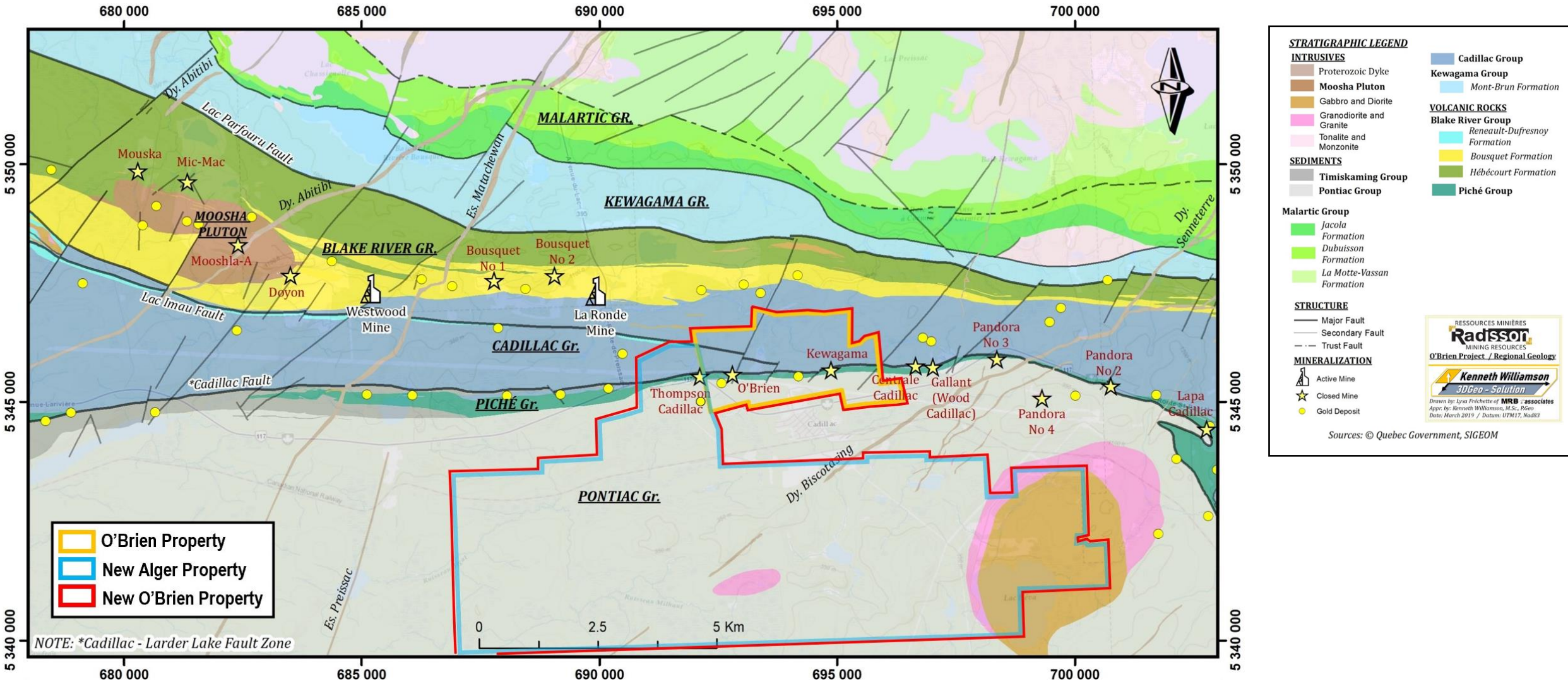


Established mining camp in a world renowned gold belt



Cadillac Mining Camp Geological Map

O'Brien Project – Land position expanded 9x following New Alger acquisition



1. See [press-release dated August 10, 2020](#) for details and related disclosures

New Alger Acquisition & Partnership with Renforth Resources¹



Transaction Terms

- Acquisition of a 100% interest in New Alger for 12 M RDS shares, C\$0.5 M cash and C\$1.5 M contingent payment.
- Strategic investment of C\$1.8 M by Radisson for a 9.6% stake (24 M shares) in RFR

Benefits to Radisson

- Adds scale and enhances resource upside to increase the O'Brien project's investment appeal.
 - Nine-fold increase in claims to 5,839 ha (from 637 ha)
 - Expands prospective strike along Cadillac break to include over 2.5 km to the east and west of the historic O'Brien Mine (main shaft).
 - Upside from Discovery veins, 250 m south of the Cadillac Break that have been traced along strike by sampling/drilling for 500 m, to a depth of 120 m. Mineralization remains open along strike and at depth.
- Radisson will hold a 9.6% equity interest in Renforth for exposure to other assets in portfolio
 - Company will be well capitalized post transaction to undertake significant work programs at other key assets
- Radisson's cash position is sufficient to both complete the transaction and expand drill program to include newly acquired claims.
- Attractive price paid for New Alger considering the extent of historical work completed.

Benefits to Renforth

- Continued exposure to the combined O'Brien and New Alger properties through 5.7% equity interest in Radisson.
- Estimated transaction value (including contingent payments) of C\$9.5 M² is significant to Renforth
- Transformational deal for Renforth through a major capital infusion at a significant premium
 - Renforth's cash position proforma deal increases almost five-fold to \$4.7 M
 - This does not include \$1.8 M in potential future proceeds from in-the-money warrants and options
- Renforth will be well capitalized to fund significant work programs at its other key assets including Parbec
- Spotlight should help increase capital markets exposure, which will enable Renforth to build on the positive momentum.

1. See [press-release dated August 10, 2020](#) for details and related disclosures; 2. Based on three-day VWAP for Radisson prior to announcement.

Robust resource even at a higher cut-off grade

Significant increase in O'Brien mineral resource estimate (July 2019)¹ driven by new litho-structural interpretation

		Indicated resources			Inferred resources		
	Cut-off (g/t Au)	Tonnage (t)	Grade (g/t Au)	Ounces (oz)	Tonnage (t)	Grade (g/t Au)	Ounces (oz)
July 2019 ¹	5.00	950	9.48	289	617	7.31	145
March 2018 ²	5.00	625	8.30	167	416	7.21	96
Variance		↑52%	↑14%	↑74%	↑48%	↑1%	↑52%

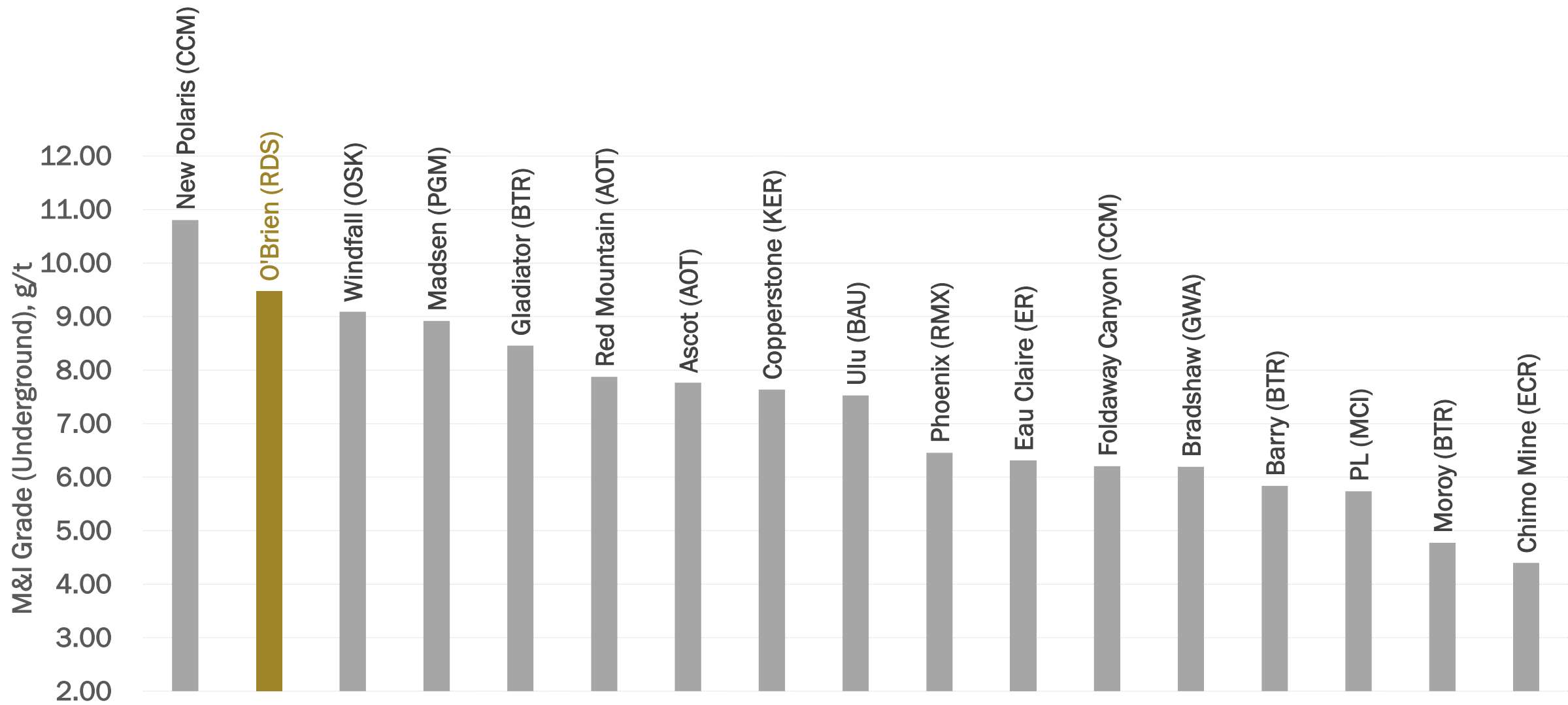
Mineral Resource Estimate (July 2019) Sensitivity to Cut-off Grade¹

	Indicated resources			Inferred resources		
Cut-off (g/t Au)	Tonnage (kt)	Grade (g/t Au)	Ounces (koz)	Tonnage (kt)	Grade (g/t Au)	Ounces (koz)
7.00	545	12.16	213	244	9.69	76
6.00	712	10.82	248	375	8.54	103
5.00	950	9.48	289	617	7.31	145
4.00	1,350	7.99	347	975	6.27	197
3.50	1,600	7.32	377	1,208	5.78	225
3.00	1,906	6.67	409	1,500	5.29	255

1. NI 43-101 Technical report for the O'Brien project, Abitibi, Québec, 3D Geo-solution, July 15, 2019

2. NI 43-101 Technical report for the O'Brien project, Abitibi, Québec, InnovExplo, March 20, 2018

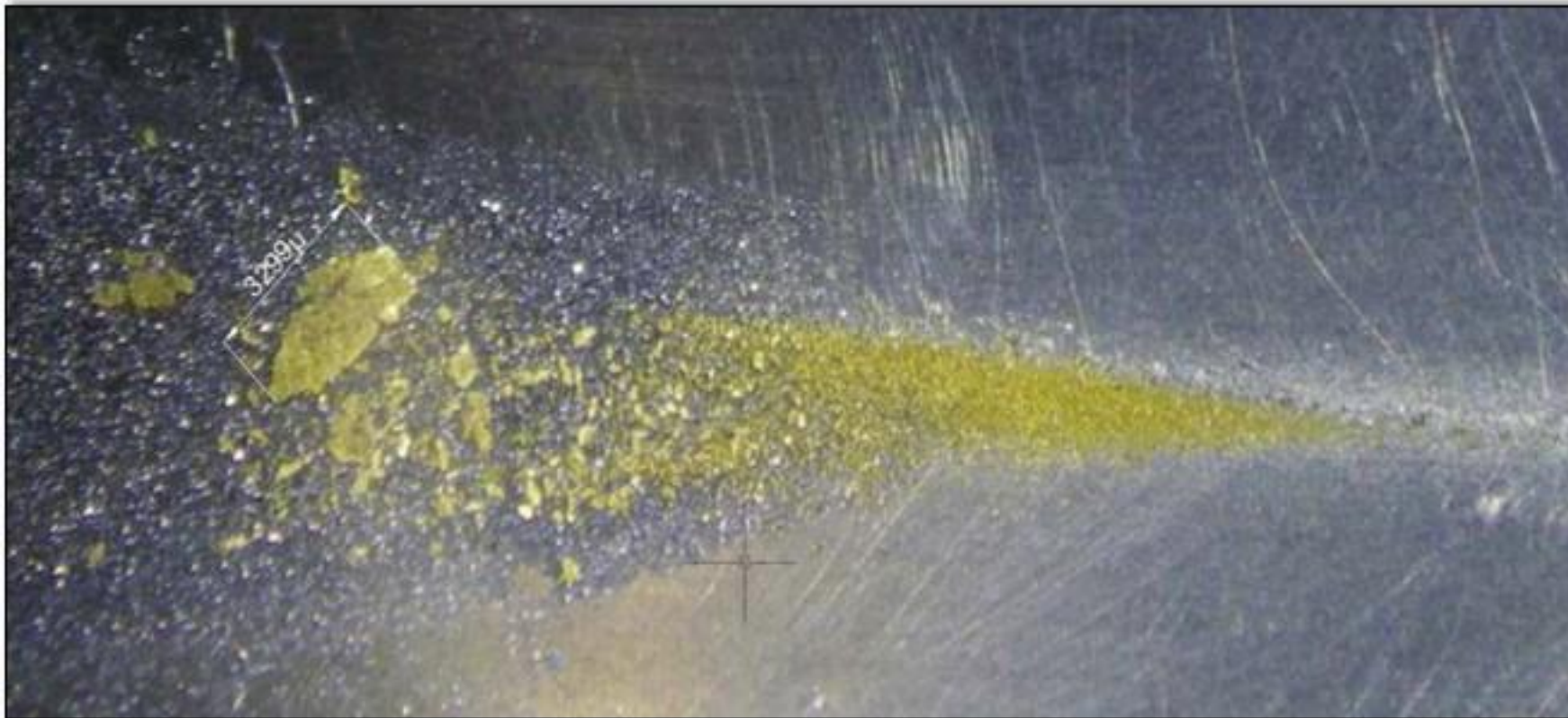
O'Brien: Among the highest-grade undeveloped gold projects (Canada/USA) not owned by a producer



Note: Data labels in the following format: Project name (Company ticker/symbol). Source: Public company disclosures

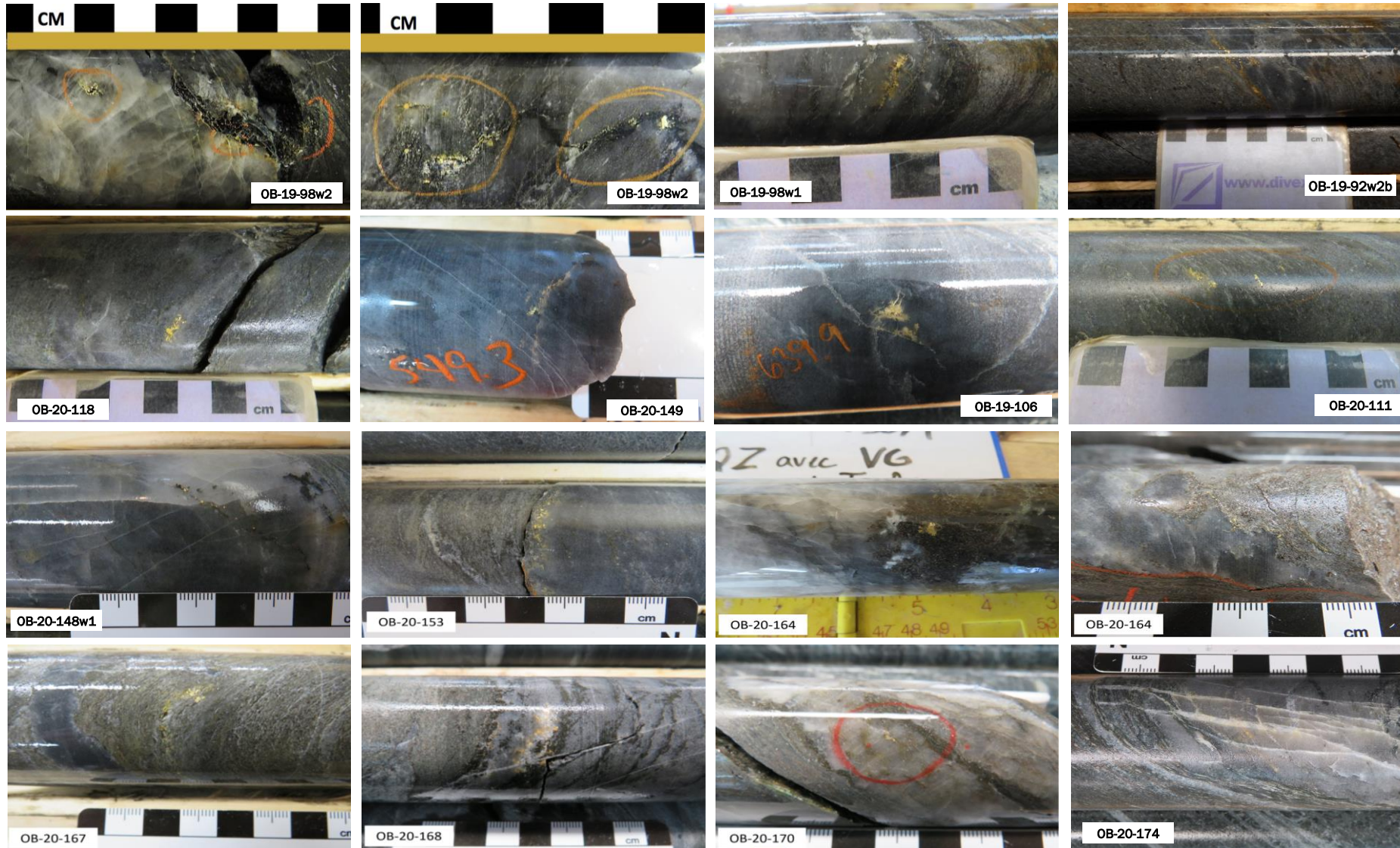
Preliminary metallurgical test work: Potential upside to grade?

- 11.13 g/t Au average grade obtained^{1,2}
 - 53.3% above sample grade
- 59.2% recovery by gravity concentration²
- Total recovery of up to 94%²

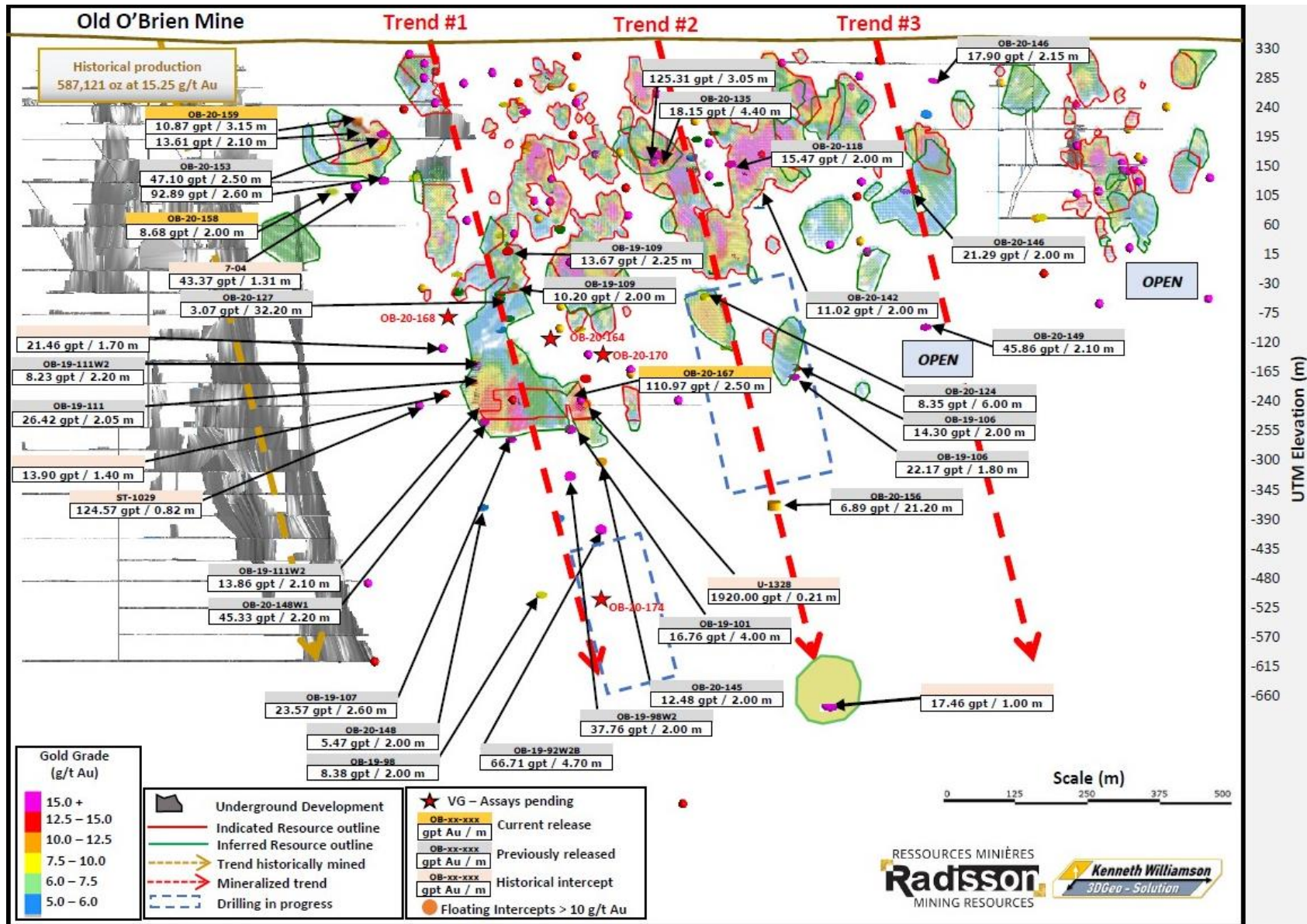


1. Sample tested totalled 61 kg and graded 7.26 g/t Au. It consisted of composite core lengths from the main structures of 36E area.
2. See press release of August 26, 2014

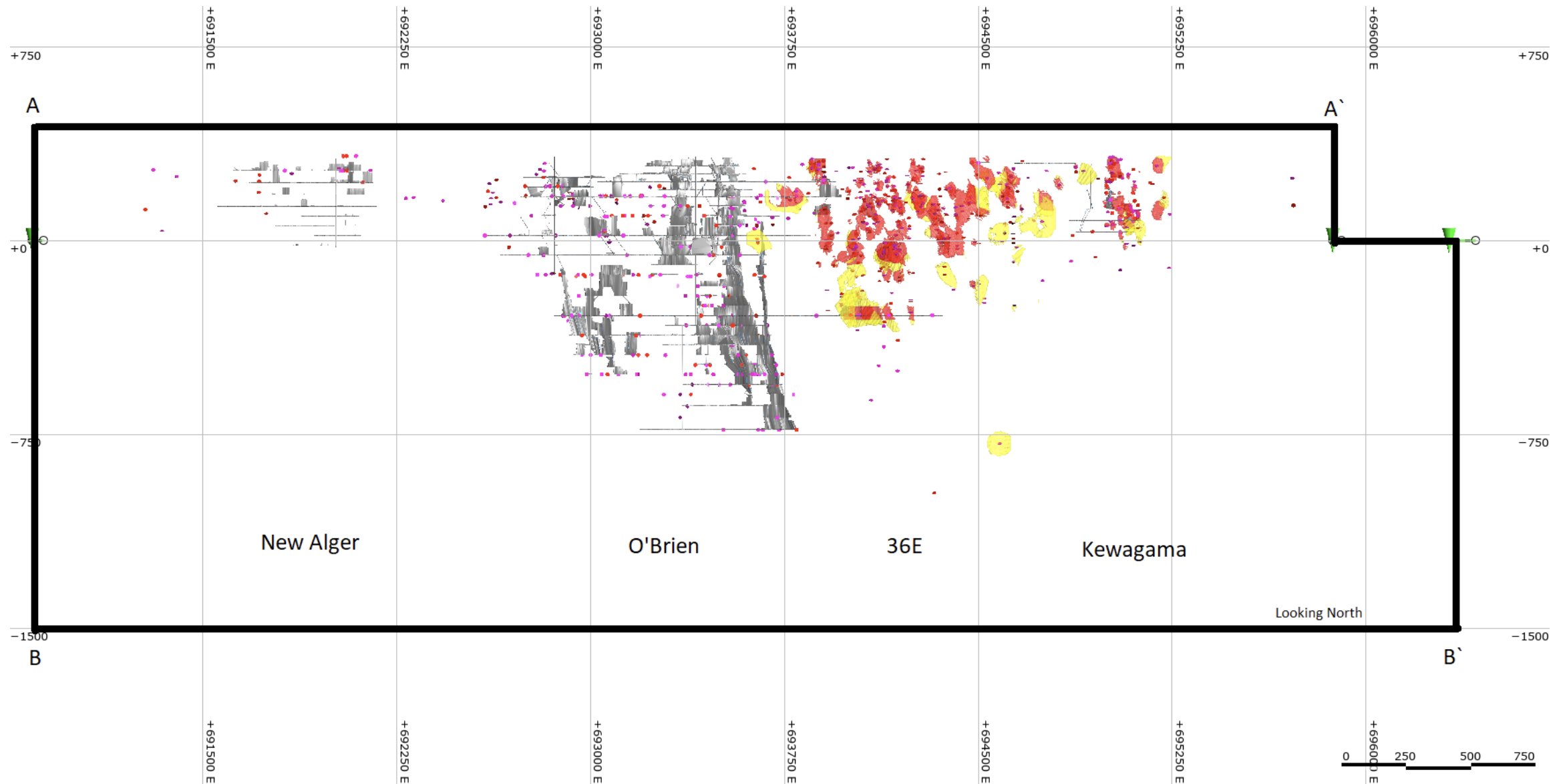
O'Brien drill core with visible gold showings



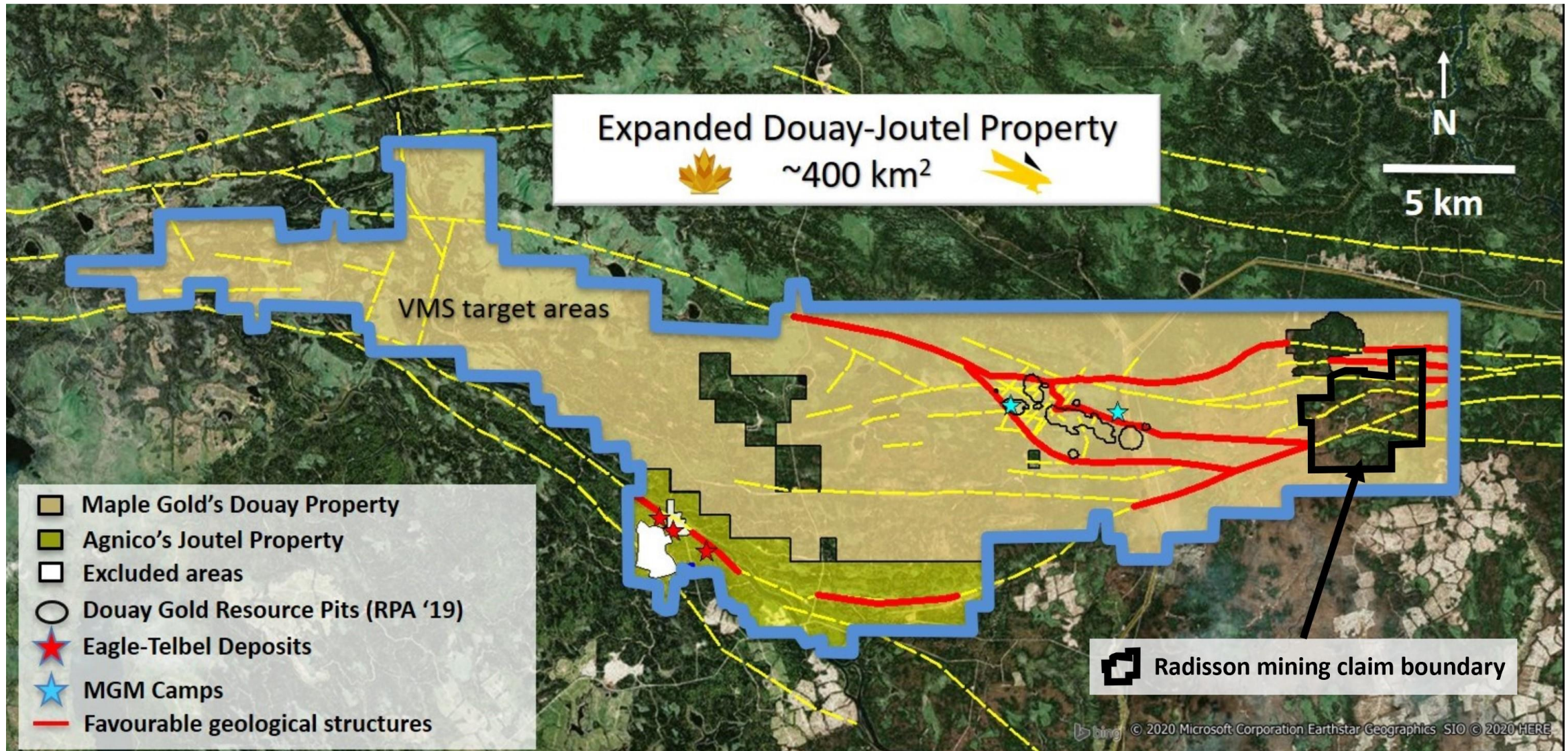
Well funded for the largest drill campaign in the history of the company (~130,000 m)



>5km of Strike Length - Blue Sky



Douay Project: Radisson's claims relative to Agnico-Eagle – Maple Gold JV¹

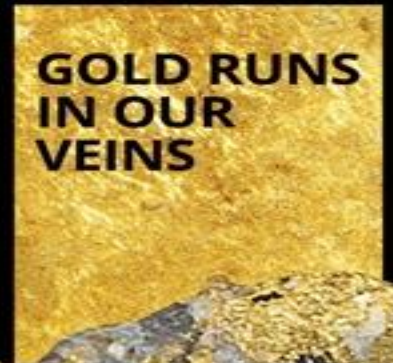




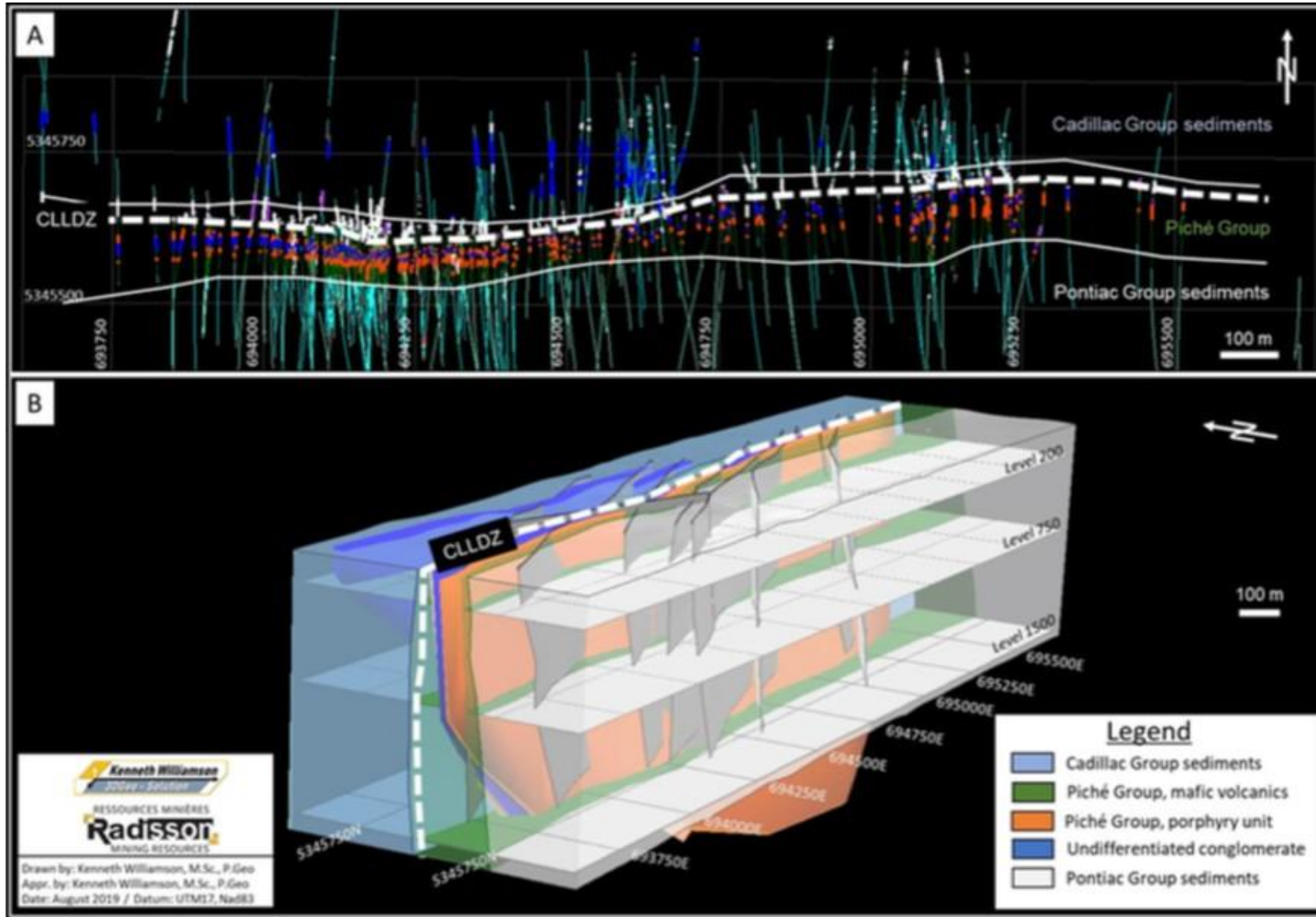
Contact Information

Hubert Parent-Bouchard
Corporate Development
+1.819.763.9969
hpbouchard@radissonmining.com

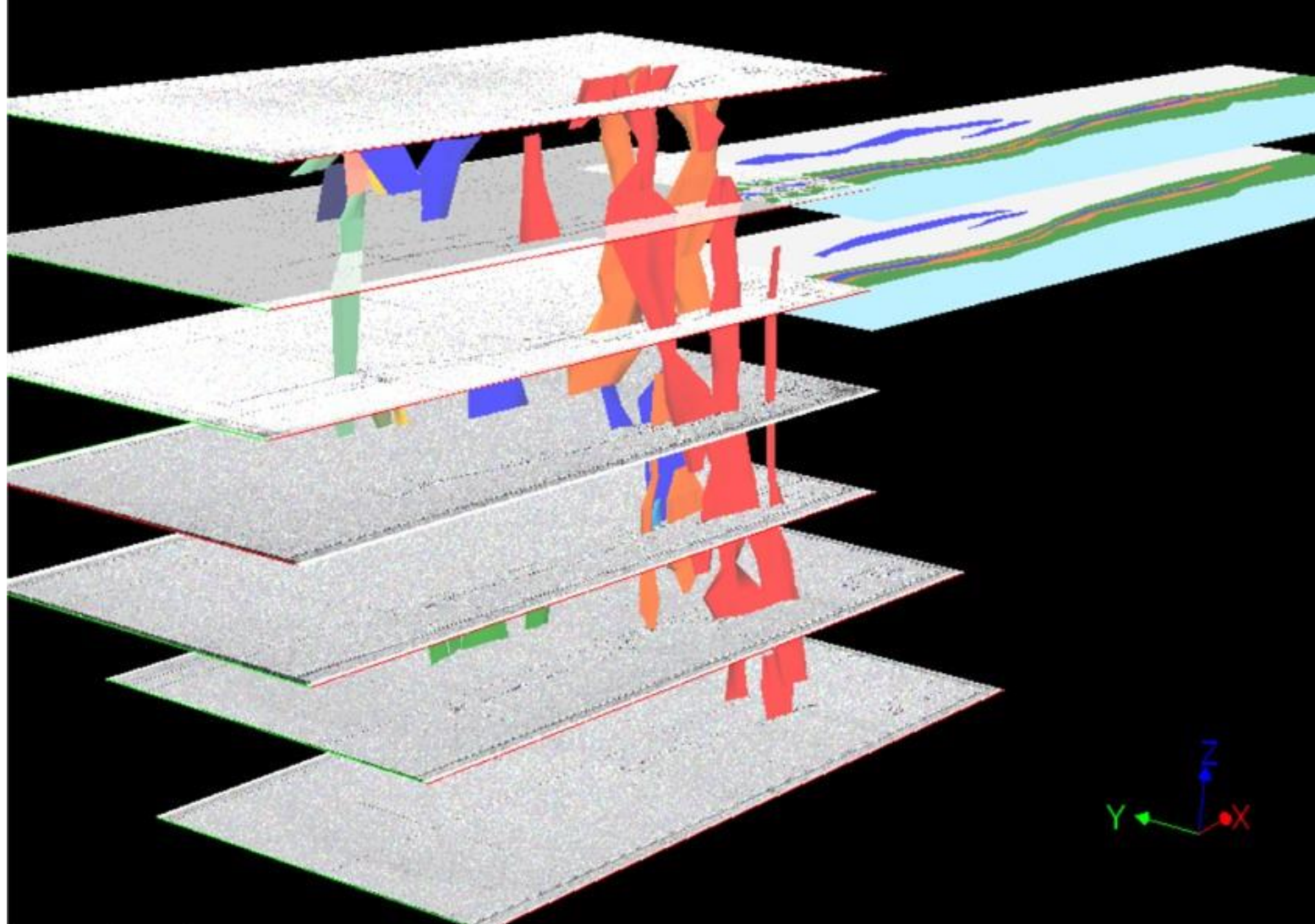
Radisson Mining Resources Inc.
700 Dallaire Ave, 2nd Floor
Rouyn-Noranda. QC J9X 4V9
www.radissonmining.com



Appendix: 2019 Lithostructural Model



Appendix: 2019 Litho-structural Model – Validated by data from the old O'Brien Mine

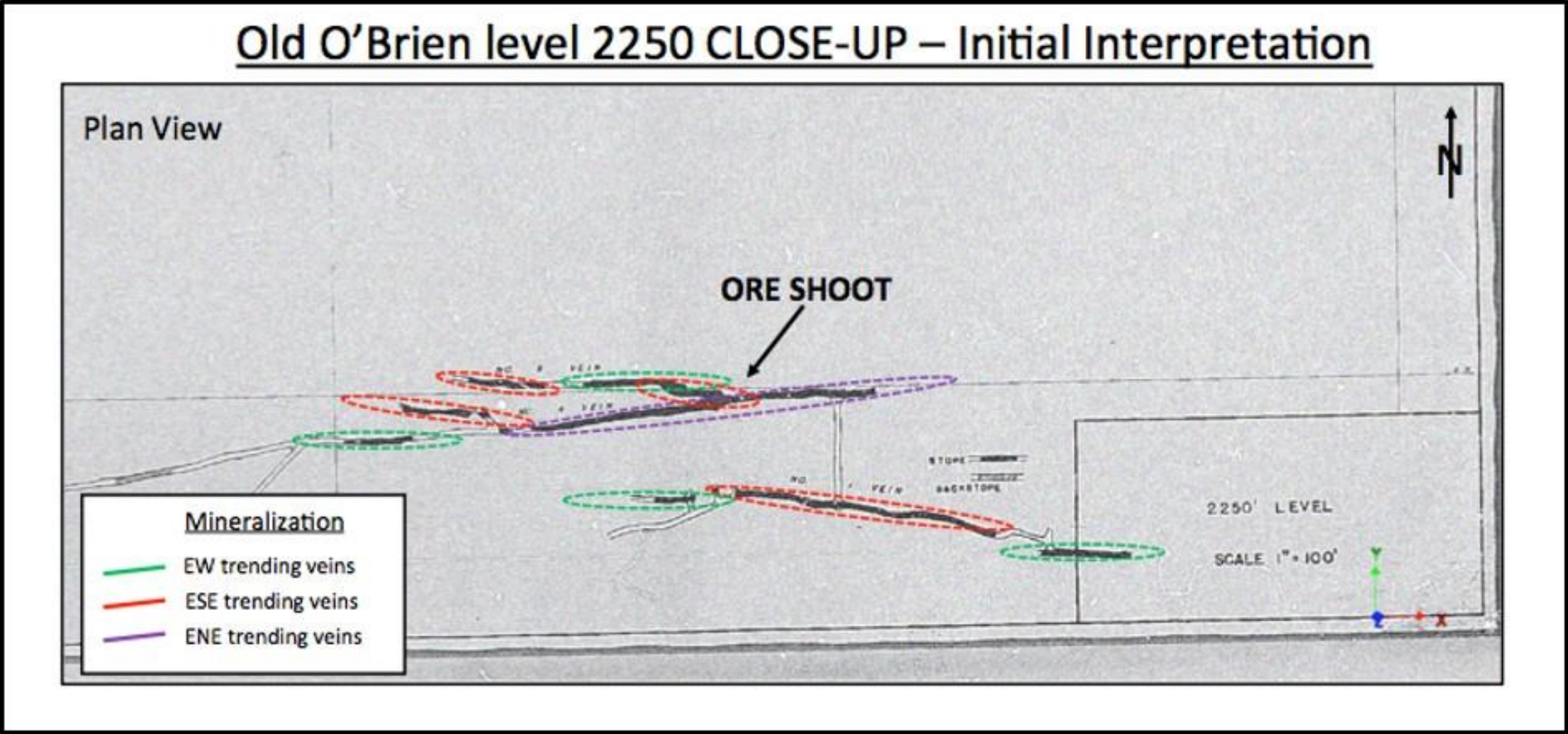


O'Brien Mine: 3D Isometric view

- Mined 587 koz @ 15.25 g/t (1926 – 1957)
- Mined to a depth of ~1,100 m
- ~90% of production came from only 3 veins

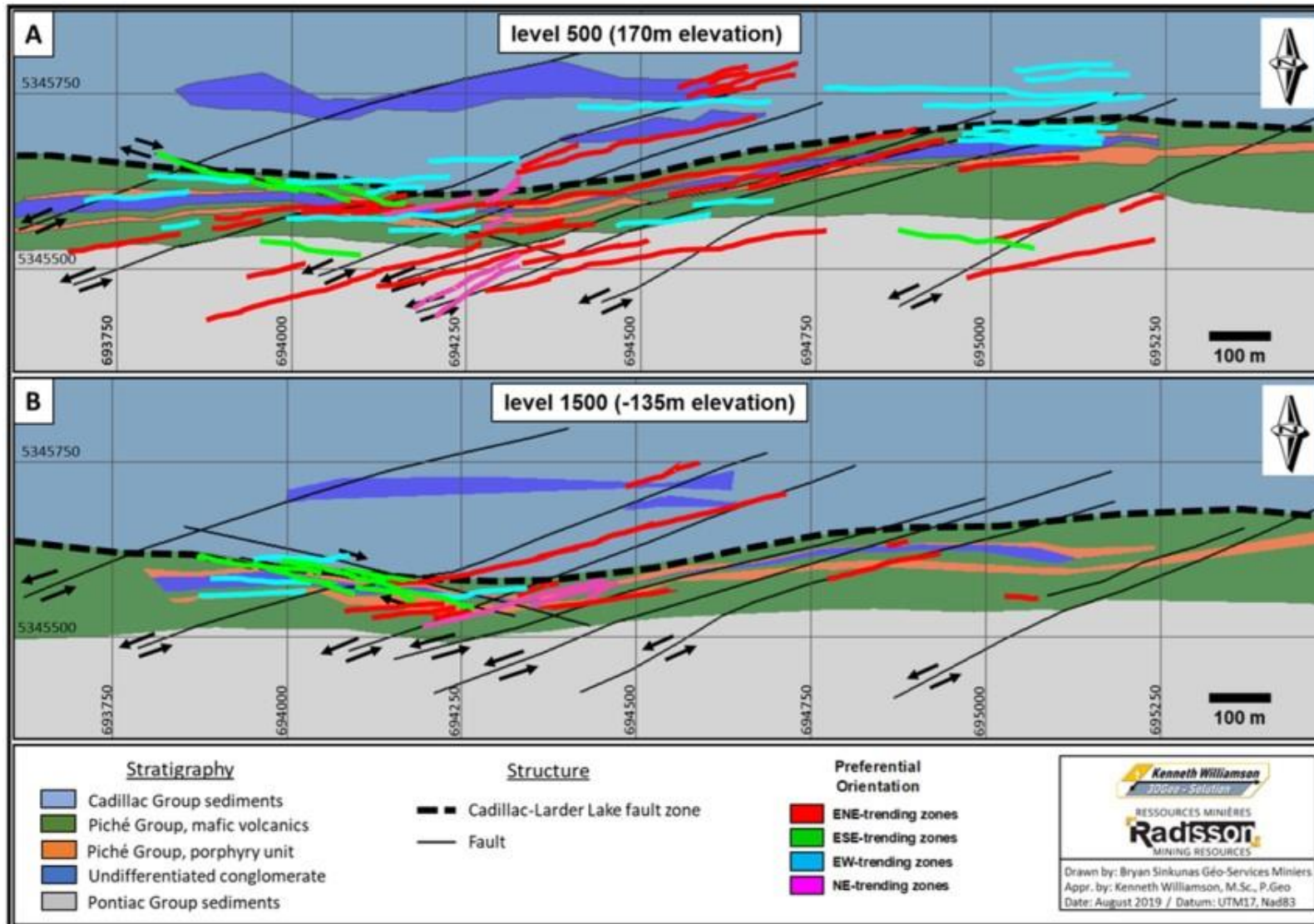
Source: NI 43-101 Technical report for the O'Brien project, Abitibi, Québec, 3D Geo-solution, July 15, 2019

Appendix: 2019 Litho-structural model – Strong compatibility with structures mined at O’Brien



Level plans based on old production data show a strong compatibility between the new model and the geometry of structures previously mined at the O’Brien mine.

Appendix: 2019 litho-structural model - Plan view at different elevations

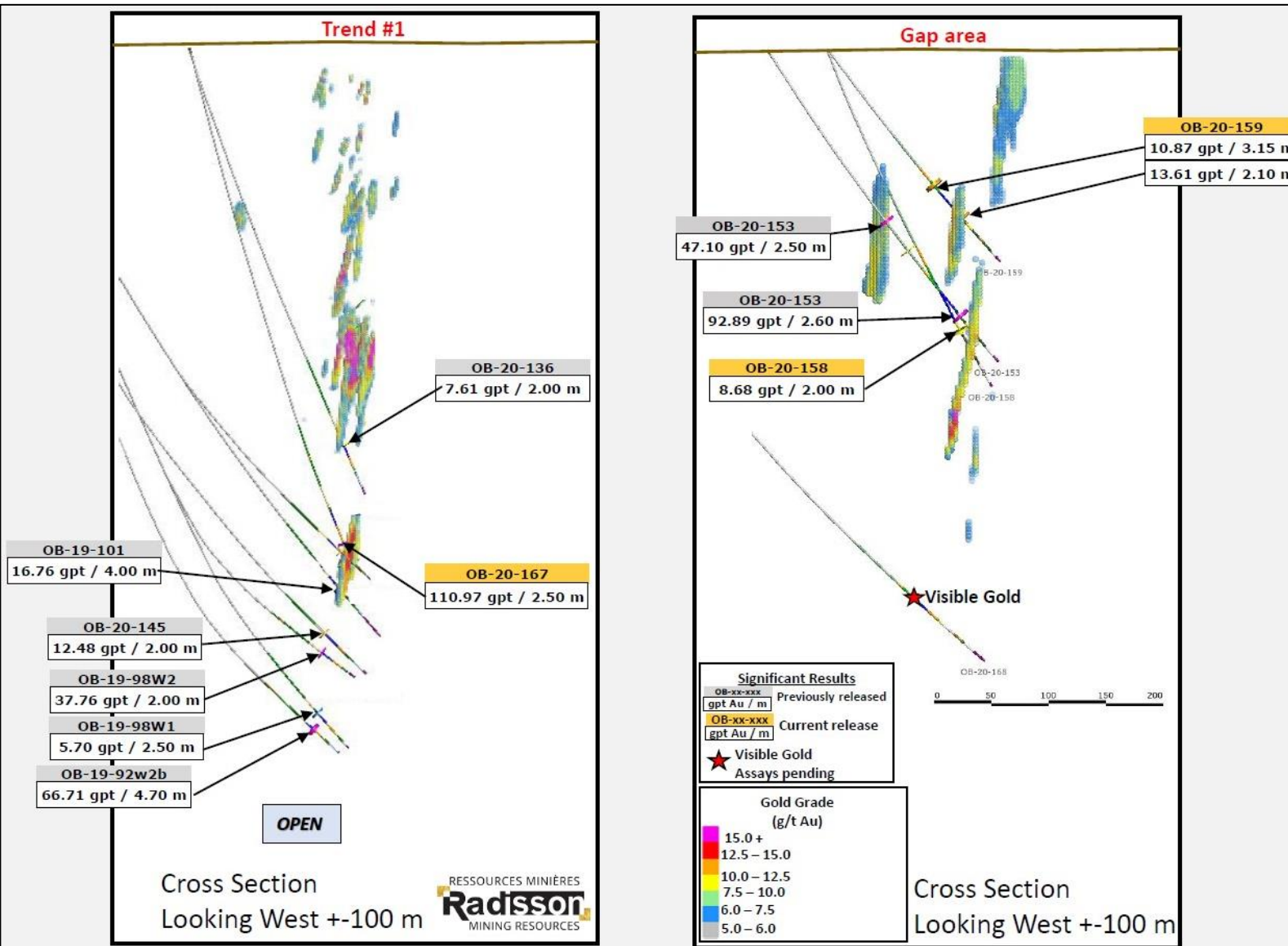


New model provides an opportunity to better target high-grade zones

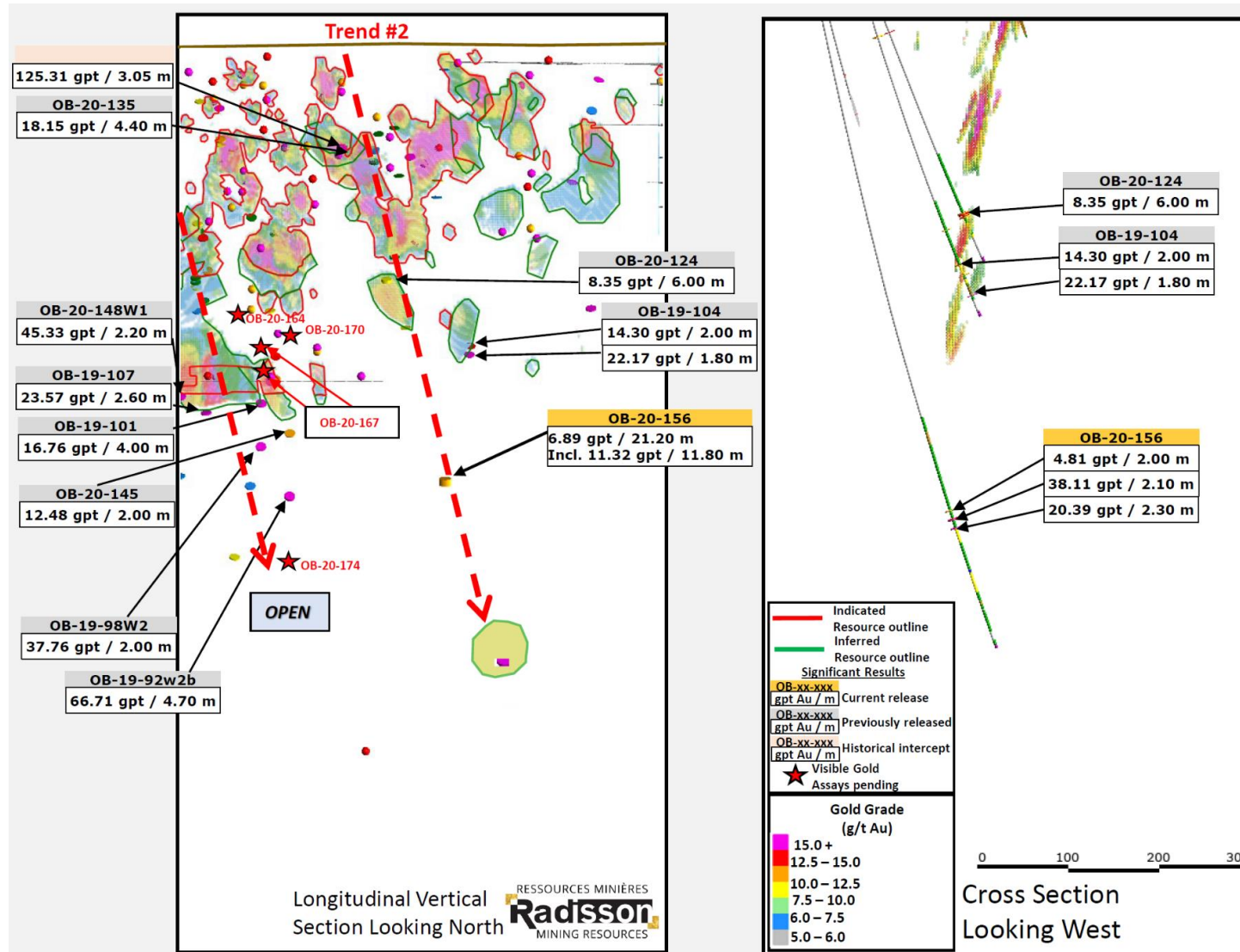
- ~63 veins have been modeled, the majority of which have yet to be fully drill tested
- Data suggests very good continuity of mineralization to depth, but there has been limited drilling below 550 m
- Opportunity to better target high-grade zones due to improved structural understanding

Resource expansion potential: First high-grade trend, 300 m east of the old O'Brien mine

- Drilling in suggests continuity of mineralization in the first trend down to a depth of 950 m, within structures bearing similarities to that historically mined at O'Brien.
- Current resources limited to 600 m vertical depth
- High-grade intercepts from the ongoing program (including assay pending holes that intersected VG) as well as historical intercepts highlight the potential to expand mineralization beyond the resource boundary laterally and at depth.



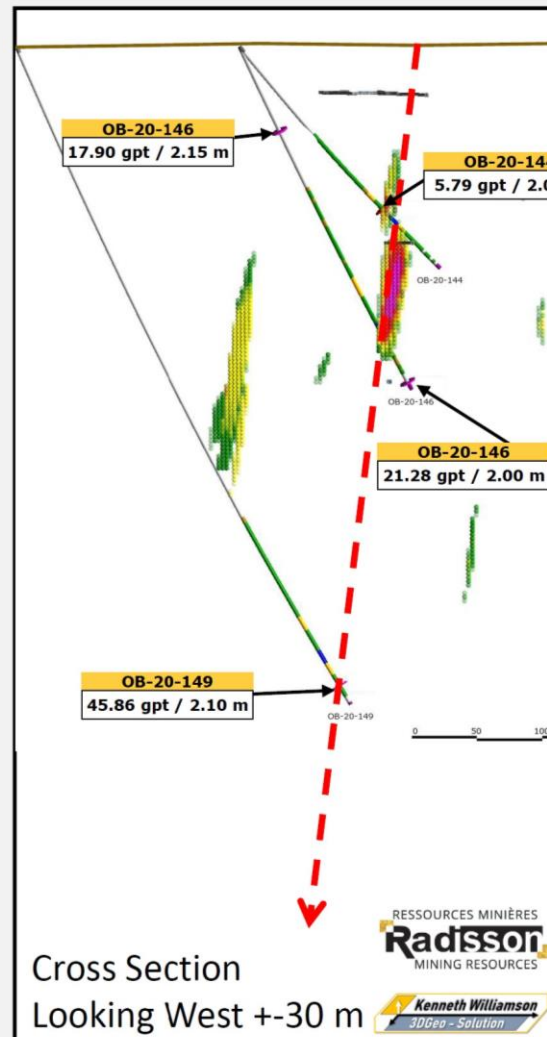
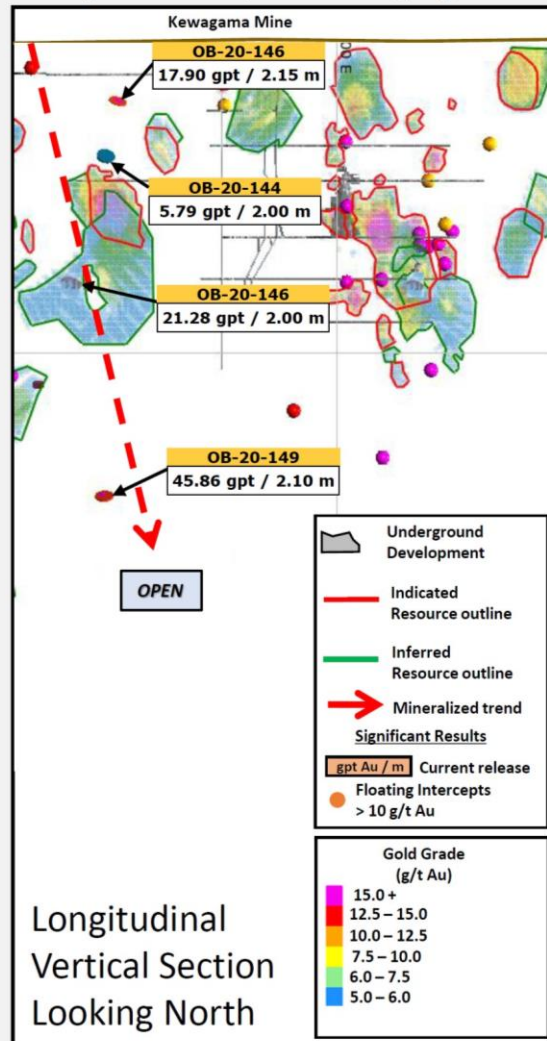
Resource expansion potential: Potential 2nd mineralized trend 600 m east of the old O'Brien mine



- Current resources in this area are largely limited to a vertical depth of 400 m.
- Drilling so far suggests continuity of mineralization to a vertical depth of almost 700 m
- Could extend deeper to 1,100 m where a historical intercept returned 17.46 g/t over 1.00 m

Resource expansion potential: Potential 3rd mineralized trend 900 m east of the old O'Brien mine

O'Brien Project – Third potential high-grade mineralized trend (900 m east of the old O'Brien mine)



- Highlighted by OB-20-146, 16.90 g/t over 2.15 m and 21.28 g/t over 2.00 m above and below current resources.
- Highlighted by OB-20-149, 45.86 g/t over 2.10; a 260 m step-out hole below current resources
- Appears to link high grade resources above 140 m, in a sparsely drilled area
- Opportunity to add ounces below 240 m, 900 m east of the old O'Brien mine – more drilling planned in the coming weeks.

